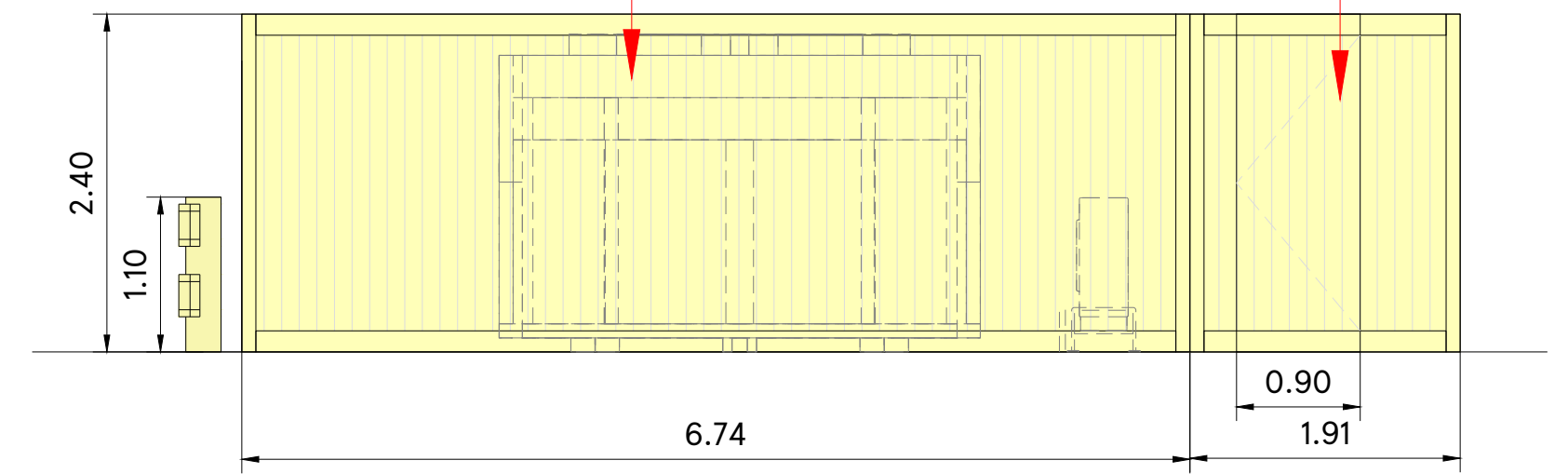


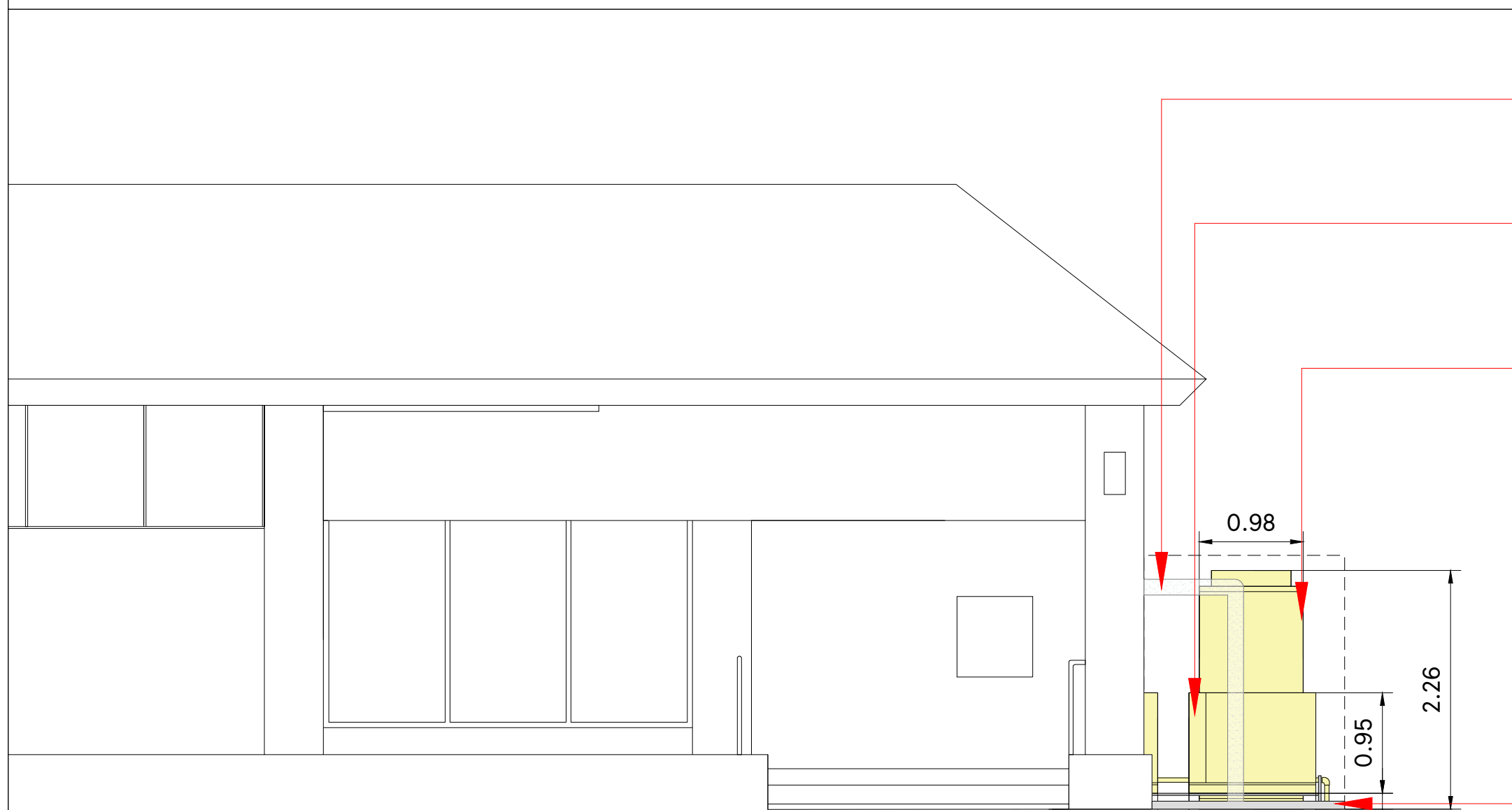
PART EAST ELEVATION WITH PLANT HIDDEN

Proposed new 2.4m high hit and miss timber fence enclosure and access gate with Armco barrier on two side to be installed

Proposed new 2.4m high hit and miss timber fence and access gate to be installed



PART AT A/SOUTH ELEVATION WITH PLANT HIDDEN



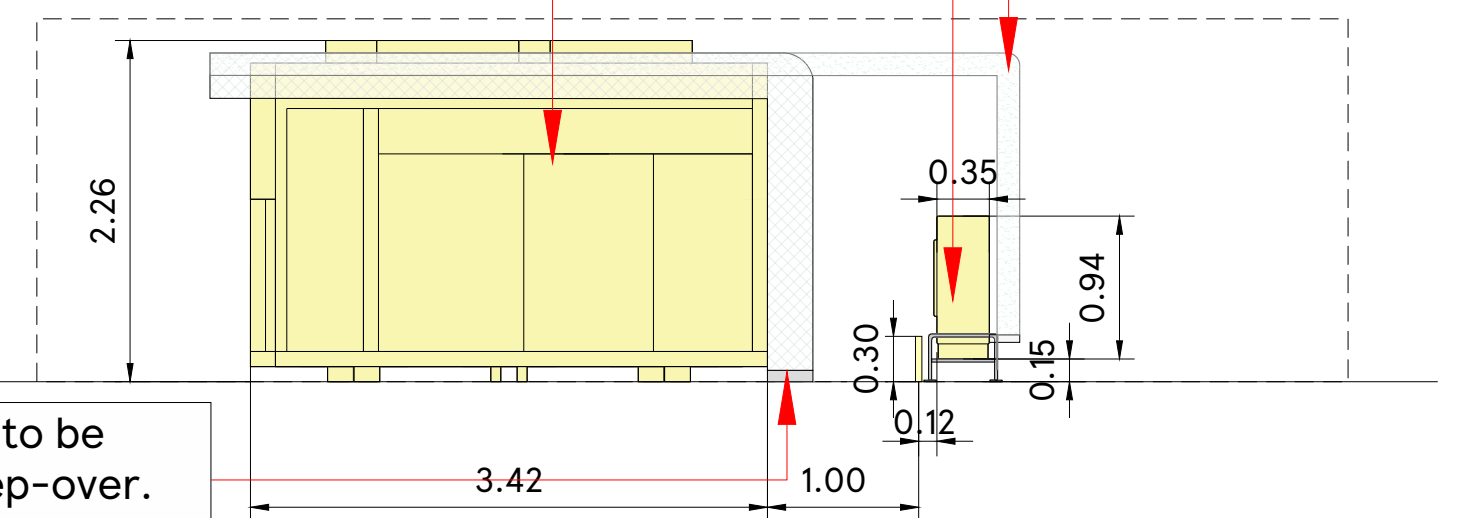
PART EAST ELEVATION WITH FENCE HIDDEN

Services duct from store to external plant area to be installed at high level, supported via unistrut.

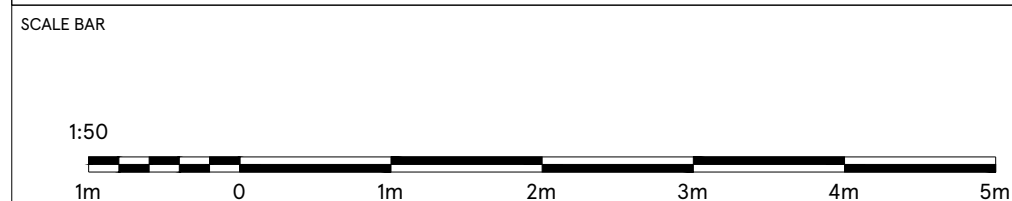
Proposed new 3x floor mounted AC units and one side surrounded with protection rail to be installed

Proposed new 2x Remote CO2 Gas Cooler to be installed

Low level services duct to be protected & to have step-over.



PART AT A/SOUTH ELEVATION WITH FENCE HIDDEN



DRAWING NO
03_3450_03E_R1

SCALE DATE
1:50@A2 23.01.2026

CHECKED BY
-

DRAWN BY
PRIYANKA

STORE TYPE
EXPRESS

STORE NAME
WOODLEY

CONTENT
PROPOSED ELEVATION-3_PLANT

TESCO
FEASIBILITY PLANNING
STORE PLANNING DEPARTMENT
PROPERTY SERVICES
HIGHWOODS BUILDING, KESTRAL WAY
WELWYN GARDEN CITY, HERTFORDSHIRE, AL7 1GB UK
TELEPHONE : 01707 395150

THE COPYRIGHT AND ALL OTHER RIGHTS IN AND RELATING TO THE PUBLICATION BELONG TO AND ARE THE SOLE PROPERTY OF TESCO STORES LIMITED. ALL RIGHTS ARE RESERVED. NEITHER THE WHOLE NOR ANY PART OF THIS PUBLICATION MAY BE REPRODUCED OR TRANSMITTED IN ANY FORM OR BY ANY ELECTRONIC OR MECHANICAL MEANS INCLUDING PHOTOCOPIING AND RECORDING OR FROM ANY RETRIEVAL SYSTEM WITHOUT THE PRIOR WRITTEN LICENCE FROM THE OWNER ©1997 TESCO STORES LIMITED