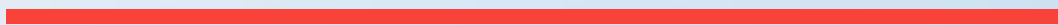
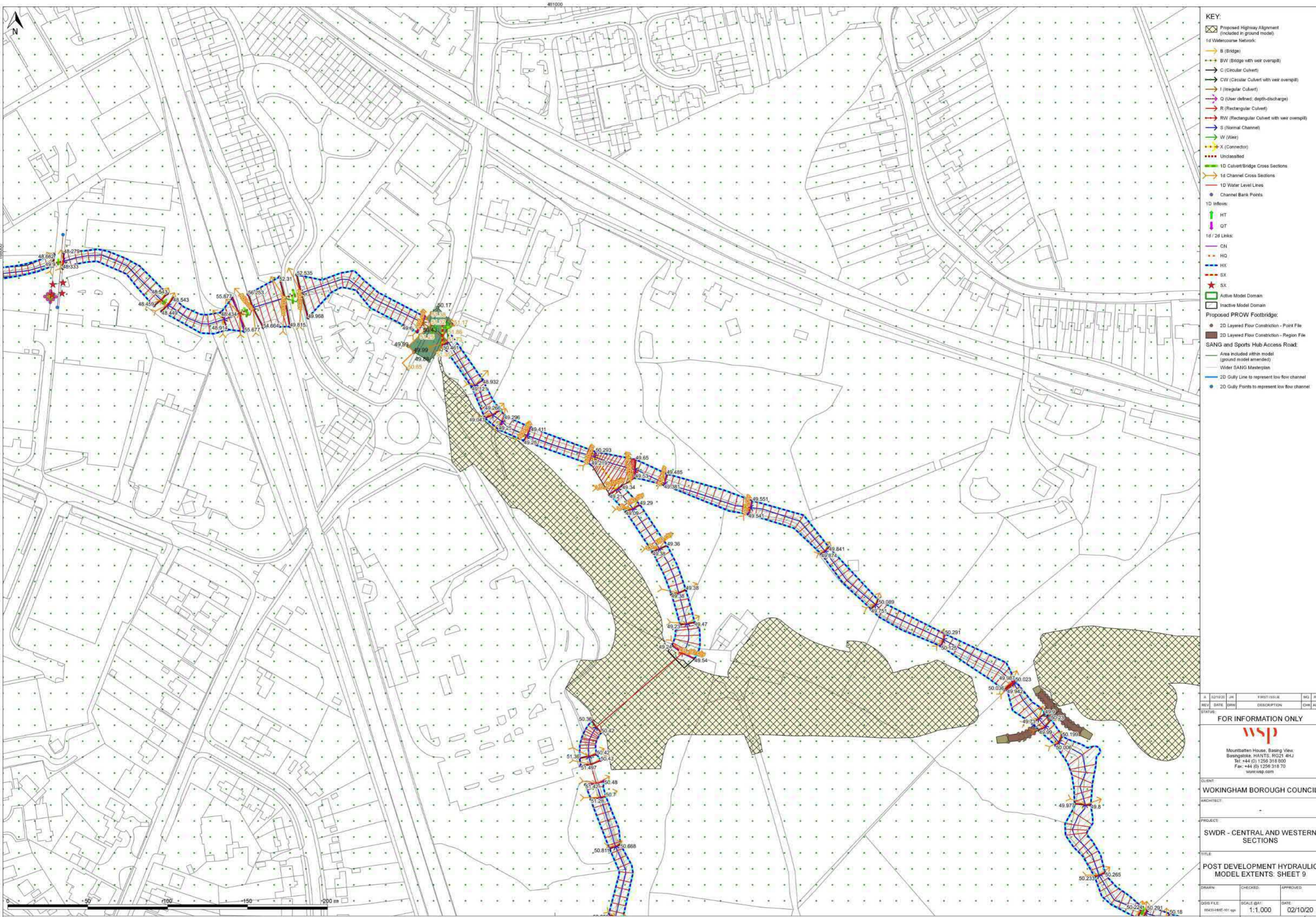


# Appendix E


(continued)

HYDRAULIC MODEL EXTENTS





- KEY:**
- Proposed Highway Alignment (Included in ground model)
  - 1d Watercourse Network:
    - B (Bridge)
    - BW (Bridge with weir overspill)
    - C (Circular Culvert)
    - CW (Circular Culvert with weir overspill)
    - I (Irregular Culvert)
    - Q (User defined: depth-discharge)
    - R (Rectangular Culvert)
    - RW (Rectangular Culvert with weir overspill)
    - S (Normal Channel)
    - W (Weir)
    - X (Connector)
    - Unclassified
  - 1D Culvert/Bridge Cross Sections
  - 1d Channel Cross Sections
  - 1D Water Level Lines
  - Channel Bank Points
  - 1D Inflows:
    - HT
    - QT
  - 1d / 2d Links:
    - CN
    - HQ
    - HX
    - SX
    - 5X
  - Active Model Domain
  - Inactive Model Domain
  - Proposed PROW Footbridge:
    - 2D Layered Flow Constriction - Point File
    - 2D Layered Flow Constriction - Region File
  - SANG and Sports Hub Access Road:
    - Area included within model (ground model amended)
    - Wider SANG Masterplan
    - 2D Gully Line to represent low flow channel
    - 2D Gully Points to represent low flow channel

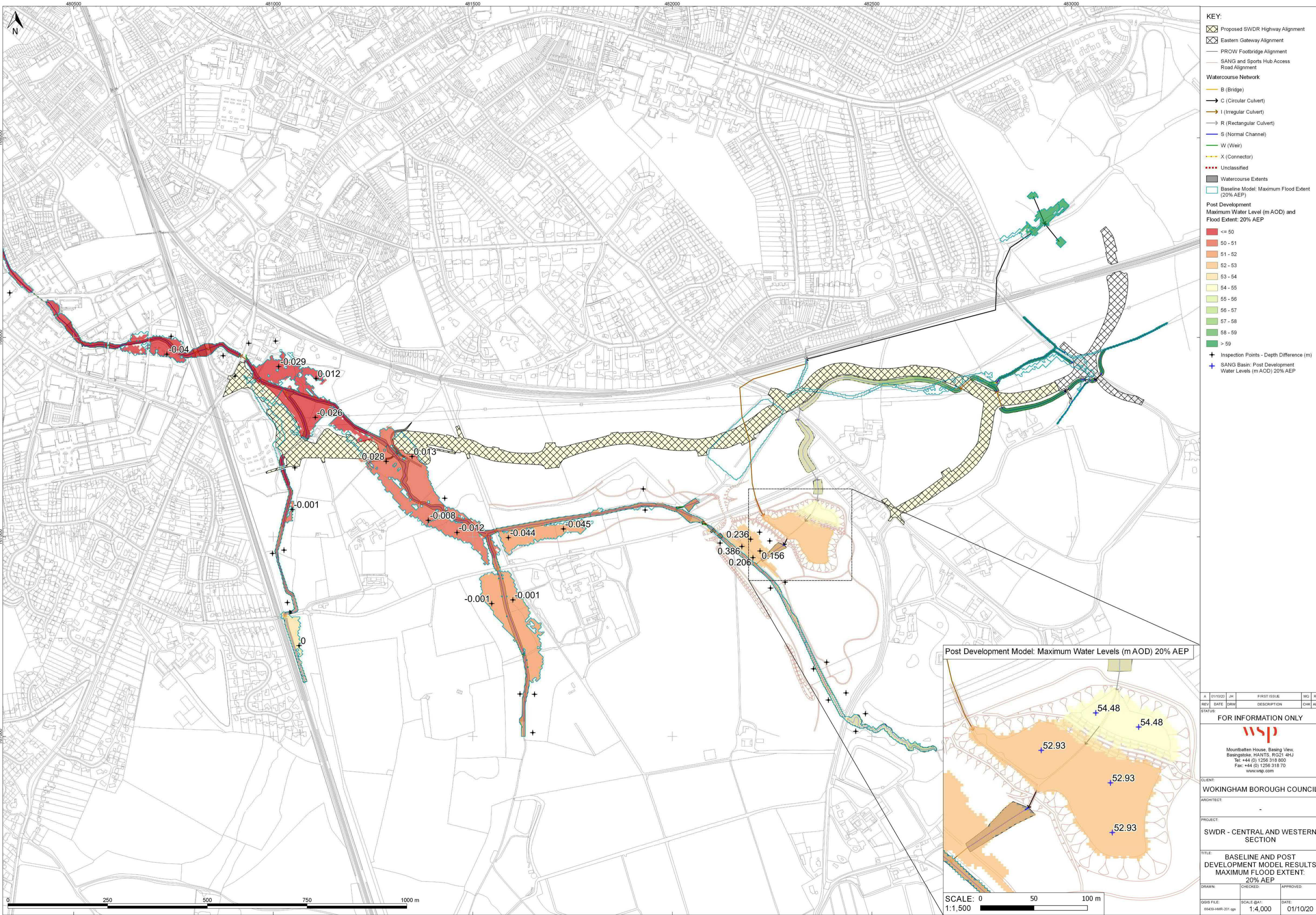
A		12/10/20	JH	FIRST ISSUE	MG	RL
REV	DATE	DRN	DESCRIPTION	CHK	APP	
STATUS:						
FOR INFORMATION ONLY						
						
Mountbatten House, Basing View, Basingstoke, HANTS, RG21 4HJ Tel: +44 (0) 1256 318 800 Fax: +44 (0) 1256 318 70 www.wsp.com						
CLIENT: WOKINGHAM BOROUGH COUNCIL						
ARCHITECT:						
PROJECT: SWDR - CENTRAL AND WESTERN SECTIONS						
TITLE: POST DEVELOPMENT HYDRAULIC MODEL EXTENTS: SHEET 9						
DRAWN:		CHECKED:		APPROVED:		
DWS FILE: 66435-HME-101-9		SCALE (A1): 1:1,000		DATE: 02/10/20		
PROJECT No: 70066439		DRAWING No: 66439-HME-101-9		REV: A		

THE PROPERTY OF THIS DRAWING AND DESIGN IS VESTED IN WSP AND MUST NOT BE COPIED OR REPRODUCED IN ANY WAY WITHOUT THEIR WRITTEN CONSENT  
CONTAINS GEODATA SURVEY DATA © CROWN COPYRIGHT AND DATABASE RIGHT 2019

# Appendix F

HYDRAULIC MODEL RESULTS





- KEY:**
- Proposed SWDR Highway Alignment
  - Eastern Gateway Alignment
  - PROW Footbridge Alignment
  - SANG and Sports Hub Access Road Alignment
- Watercourse Network**
- B (Bridge)
  - C (Circular Culvert)
  - I (Irregular Culvert)
  - R (Rectangular Culvert)
  - S (Normal Channel)
  - W (Weir)
  - X (Connector)
  - Unclassified
- Watercourse Extents**
- Baseline Model: Maximum Flood Extent (20% AEP)
- Post Development**
- Maximum Water Level (m AOD) and Flood Extent: 20% AEP
- <= 50
  - 50 - 51
  - 51 - 52
  - 52 - 53
  - 53 - 54
  - 54 - 55
  - 55 - 56
  - 56 - 57
  - 57 - 58
  - 58 - 59
  - > 59
- + Inspection Points - Depth Difference (m)
- + SANG Basin: Post Development Water Levels (m AOD) 20% AEP

A	01/10/20	JH	FIRST ISSUE	MG	RL
REV	DATE	DRW	DESCRIPTION	CHK	APP

STATUS: FOR INFORMATION ONLY



Mountbatten House, Basing View,  
Basingstoke, HANTS, RG21 4HJ  
Tel: +44 (0) 1256 318 800  
Fax: +44 (0) 1256 318 70  
www.wsp.com

CLIENT:  
WOKINGHAM BOROUGH COUNCIL

ARCHITECT:

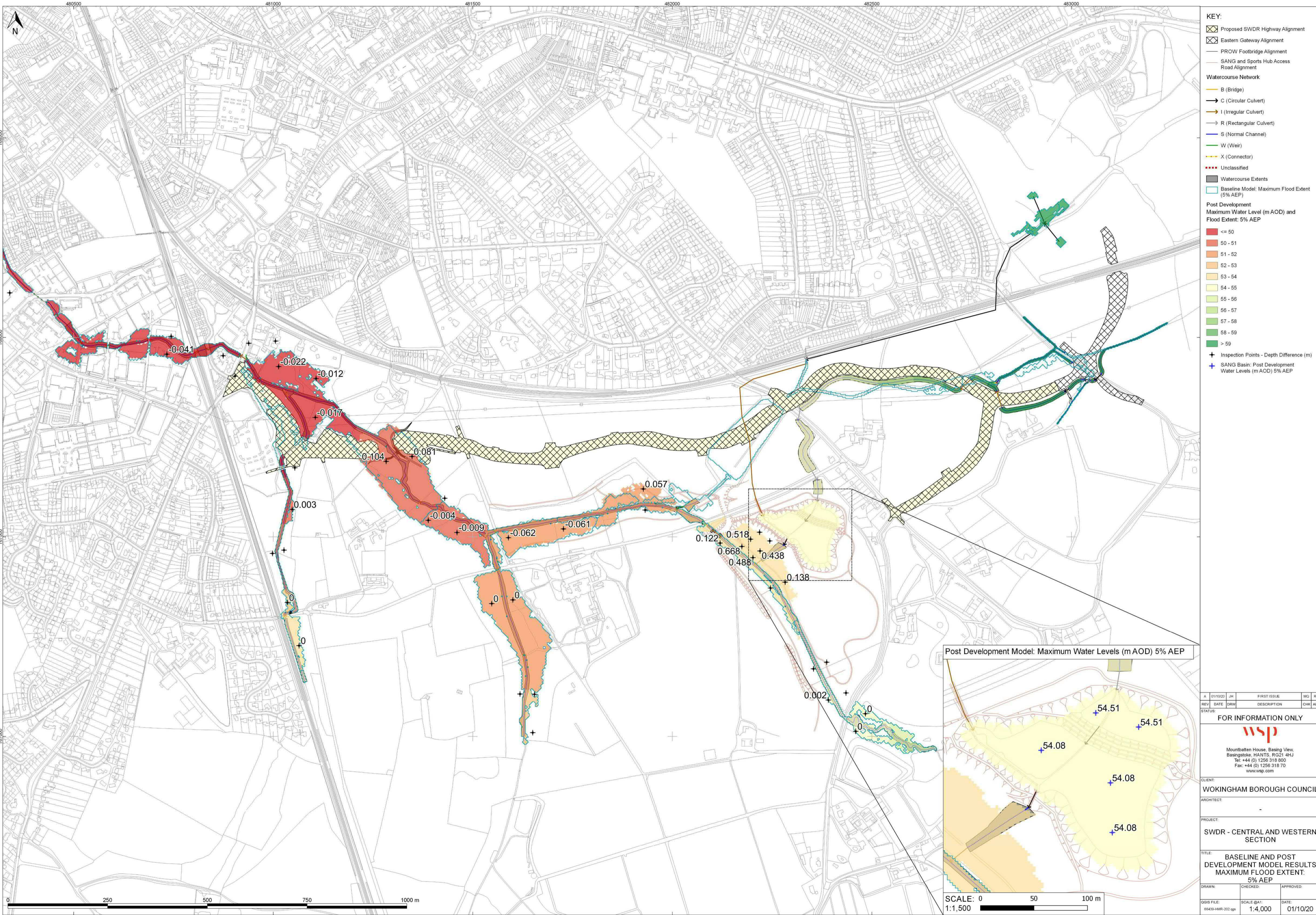
PROJECT:  
SWDR - CENTRAL AND WESTERN SECTION

TITLE:  
BASELINE AND POST DEVELOPMENT MODEL RESULTS  
MAXIMUM FLOOD EXTENT: 20% AEP

DRAWN: CHECKED: APPROVED:

GIS FILE: 66439-HMR-201.gpx SCALE @A1: 1:4,000 DATE: 01/10/20

PROJECT No: 70066439 DRAWING No: 66439-HMR-201 REV: A



**KEY:**

- Proposed SWDR Highway Alignment
- Eastern Gateway Alignment
- PROW Footbridge Alignment
- SANG and Sports Hub Access Road Alignment

**Watercourse Network**

- B (Bridge)
- C (Circular Culvert)
- I (Irregular Culvert)
- R (Rectangular Culvert)
- S (Normal Channel)
- W (Weir)
- X (Connector)
- Unclassified

**Watercourse Extents**

- Baseline Model: Maximum Flood Extent (5% AEP)

**Post Development**

Maximum Water Level (m AOD) and Flood Extent: 5% AEP


<= 50
50 - 51
51 - 52
52 - 53
53 - 54
54 - 55
55 - 56
56 - 57
57 - 58
58 - 59
> 59

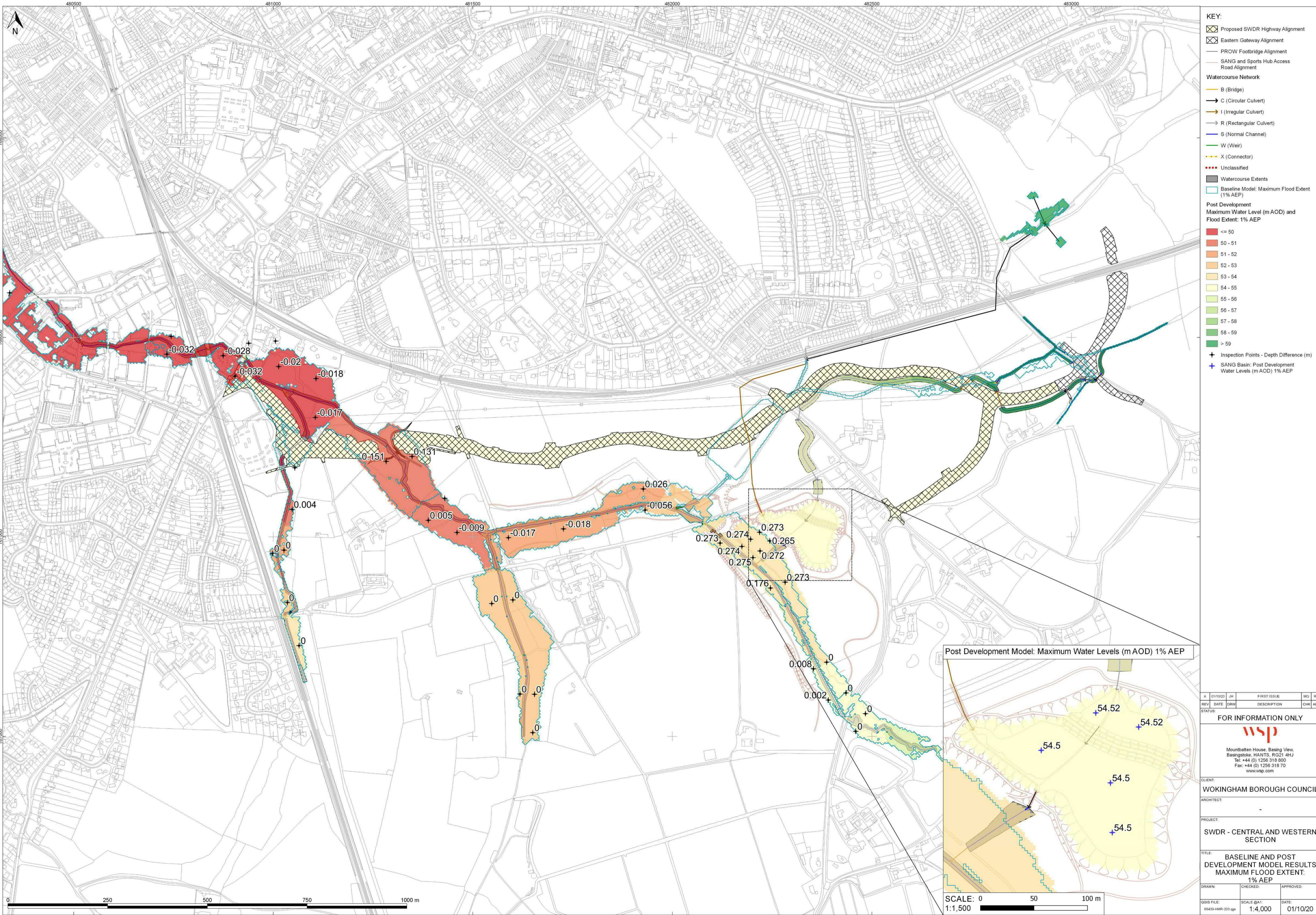
+ Inspection Points - Depth Difference (m)

+ SANG Basin: Post Development Water Levels (m AOD) 5% AEP

Post Development Model: Maximum Water Levels (m AOD) 5% AEP

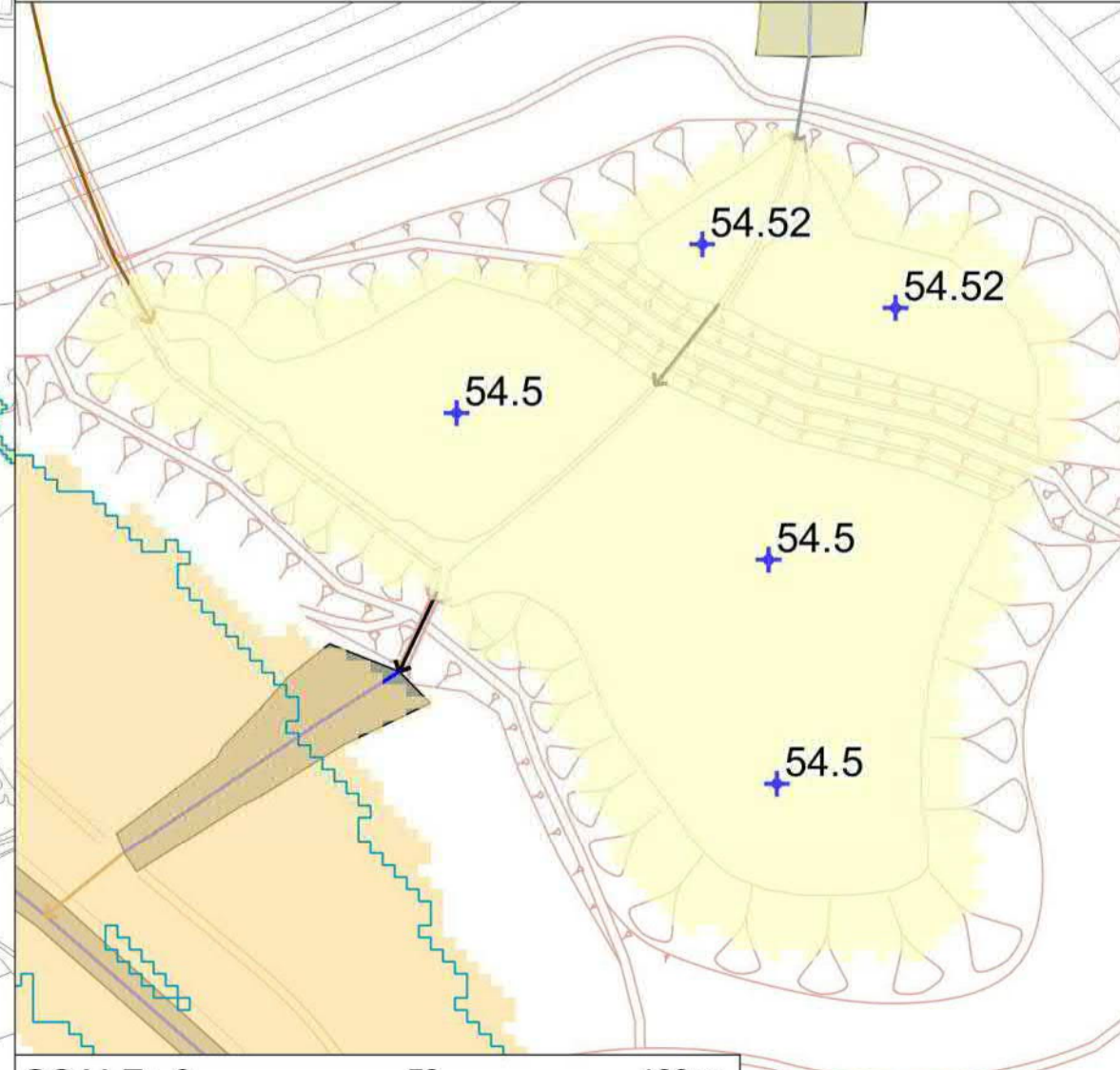


A	01/10/20	JH	FIRST ISSUE	MG	RL
REV	DATE	DRW	DESCRIPTION	CHK	APP
STATUS:					
FOR INFORMATION ONLY					
					
Mountbatten House, Basing View, Basingstoke, HANTS, RG21 4HJ Tel: +44 (0) 1256 318 800 Fax: +44 (0) 1256 318 70 www.wsp.com					
CLIENT:					
WOKINGHAM BOROUGH COUNCIL					
ARCHITECT:					
PROJECT:					
SWDR - CENTRAL AND WESTERN SECTION					
TITLE:					
BASELINE AND POST DEVELOPMENT MODEL RESULTS MAXIMUM FLOOD EXTENT: 5% AEP					
DRAWN:		CHECKED:		APPROVED:	
GIS FILE:		SCALE @A1:		DATE:	
66439-HMR-202.gpr		1:4,000		01/10/20	
PROJECT No:		DRAWING No:		REV:	
70066439		66439-HMR-202		A	



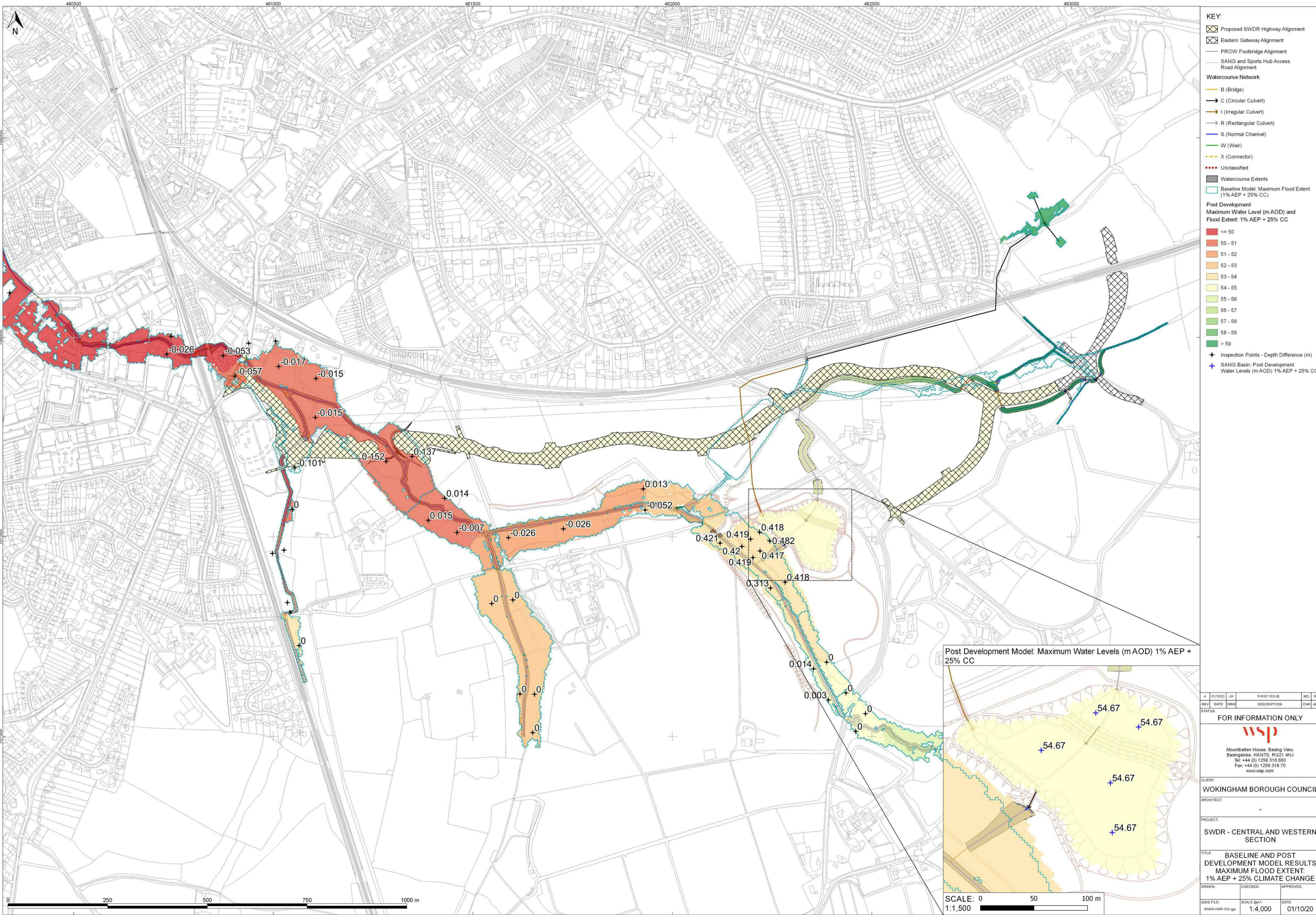
- KEY:**
- Proposed SWDR Highway Alignment
  - Eastern Gateway Alignment
  - PROW Footbridge Alignment
  - SANG and Sports Hub Access Road Alignment
- Watercourse Network**
- B (Bridge)
  - C (Circular Culvert)
  - I (Irregular Culvert)
  - R (Rectangular Culvert)
  - S (Normal Channel)
  - W (Weir)
  - X (Connector)
  - Unclassified
- Watercourse Extents**
- Baseline Model: Maximum Flood Extent (1% AEP)
- Post Development**
- Maximum Water Level (m AOD) and Flood Extent: 1% AEP
- <= 50
  - 50 - 51
  - 51 - 52
  - 52 - 53
  - 53 - 54
  - 54 - 55
  - 55 - 56
  - 56 - 57
  - 57 - 58
  - 58 - 59
  - > 59
- Inspection Points - Depth Difference (m)
  - SANG Basin: Post Development Water Levels (m AOD) 1% AEP

Post Development Model: Maximum Water Levels (m AOD) 1% AEP



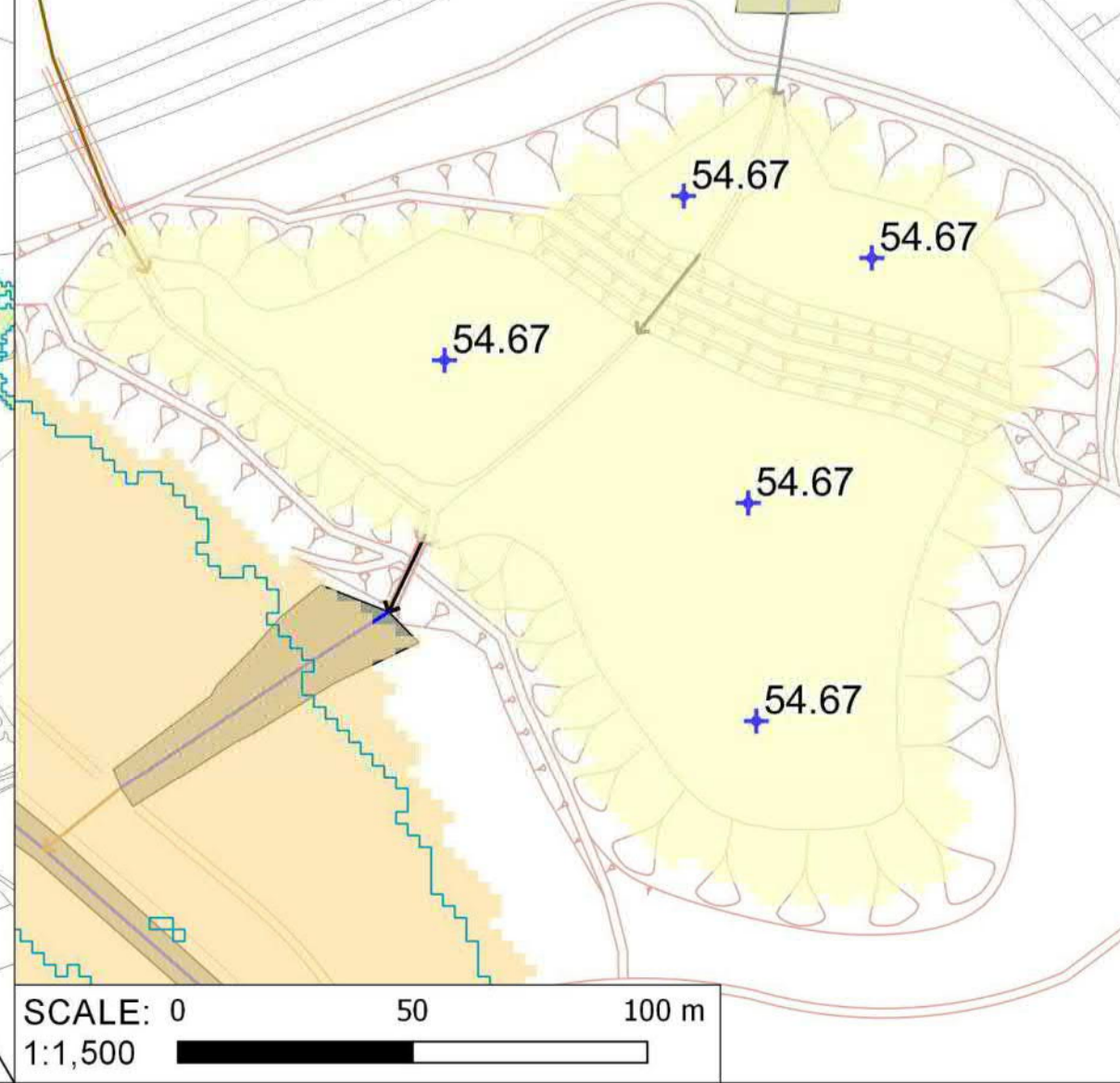
SCALE: 0 50 100 m


A	01/10/20	JH	FIRST ISSUE	MG	RL
REV	DATE	DRW	DESCRIPTION	CHK	APP
STATUS:					
FOR INFORMATION ONLY					
Mountbatten House, Basing View, Basingstoke, HANTS, RG21 4HJ Tel: +44 (0) 1256 318 800 Fax: +44 (0) 1256 318 70 www.wsp.com					
CLIENT:					
WOKINGHAM BOROUGH COUNCIL					
ARCHITECT:					
PROJECT:					
SWDR - CENTRAL AND WESTERN SECTION					
TITLE:					
BASELINE AND POST DEVELOPMENT MODEL RESULTS MAXIMUM FLOOD EXTENT: 1% AEP					
DRAWN:		CHECKED:		APPROVED:	
GIS FILE:		SCALE @A1:		DATE:	
66439-HMR-203.gpr		1:4,000		01/10/20	
PROJECT No:		DRAWING No:		REV:	
70066439		66439-HMR-203		A	



- KEY:**
- Proposed SWDR Highway Alignment
  - Eastern Gateway Alignment
  - PROW Footbridge Alignment
  - SANG and Sports Hub Access Road Alignment
- Watercourse Network**
- B (Bridge)
  - C (Circular Culvert)
  - I (Irregular Culvert)
  - R (Rectangular Culvert)
  - S (Normal Channel)
  - W (Weir)
  - X (Connector)
  - Unclassified
- Watercourse Extents**
- Baseline Model: Maximum Flood Extent (1% AEP + 25% CC)
- Post Development**
- Maximum Water Level (m AOD) and Flood Extent: 1% AEP + 25% CC
- <= 50
  - 50 - 51
  - 51 - 52
  - 52 - 53
  - 53 - 54
  - 54 - 55
  - 55 - 56
  - 56 - 57
  - 57 - 58
  - 58 - 59
  - > 59
- Inspection Points - Depth Difference (m)**
- SANG Basin: Post Development Water Levels (m AOD) 1% AEP + 25% CC

Post Development Model: Maximum Water Levels (m AOD) 1% AEP + 25% CC



A	01/10/20	JH	FIRST ISSUE	MG	RL
REV	DATE	DRW	DESCRIPTION	CHK	APP
STATUS:					
FOR INFORMATION ONLY					
					
Mountbatten House, Basing View, Basingstoke, HANTS, RG21 4HJ Tel: +44 (0) 1256 318 800 Fax: +44 (0) 1256 318 70 www.wsp.com					
CLIENT:					
WOKINGHAM BOROUGH COUNCIL					
ARCHITECT:					
PROJECT:					
SWDR - CENTRAL AND WESTERN SECTION					
TITLE:					
BASELINE AND POST DEVELOPMENT MODEL RESULTS MAXIMUM FLOOD EXTENT: 1% AEP + 25% CLIMATE CHANGE					
DRAWN:		CHECKED:		APPROVED:	
GIS FILE:		SCALE @A1:		DATE:	
66439-HMR-204.gpr		1:4,000		01/10/20	
PROJECT No:		DRAWING No:		REV:	
70066439		66439-HMR-204		A	