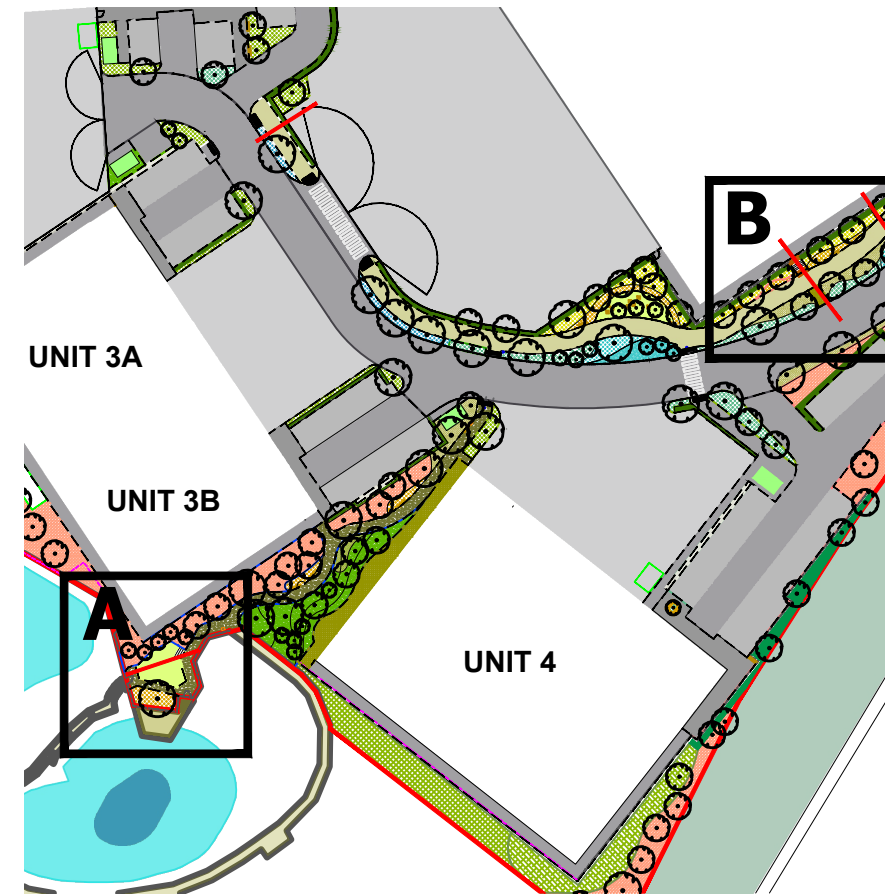
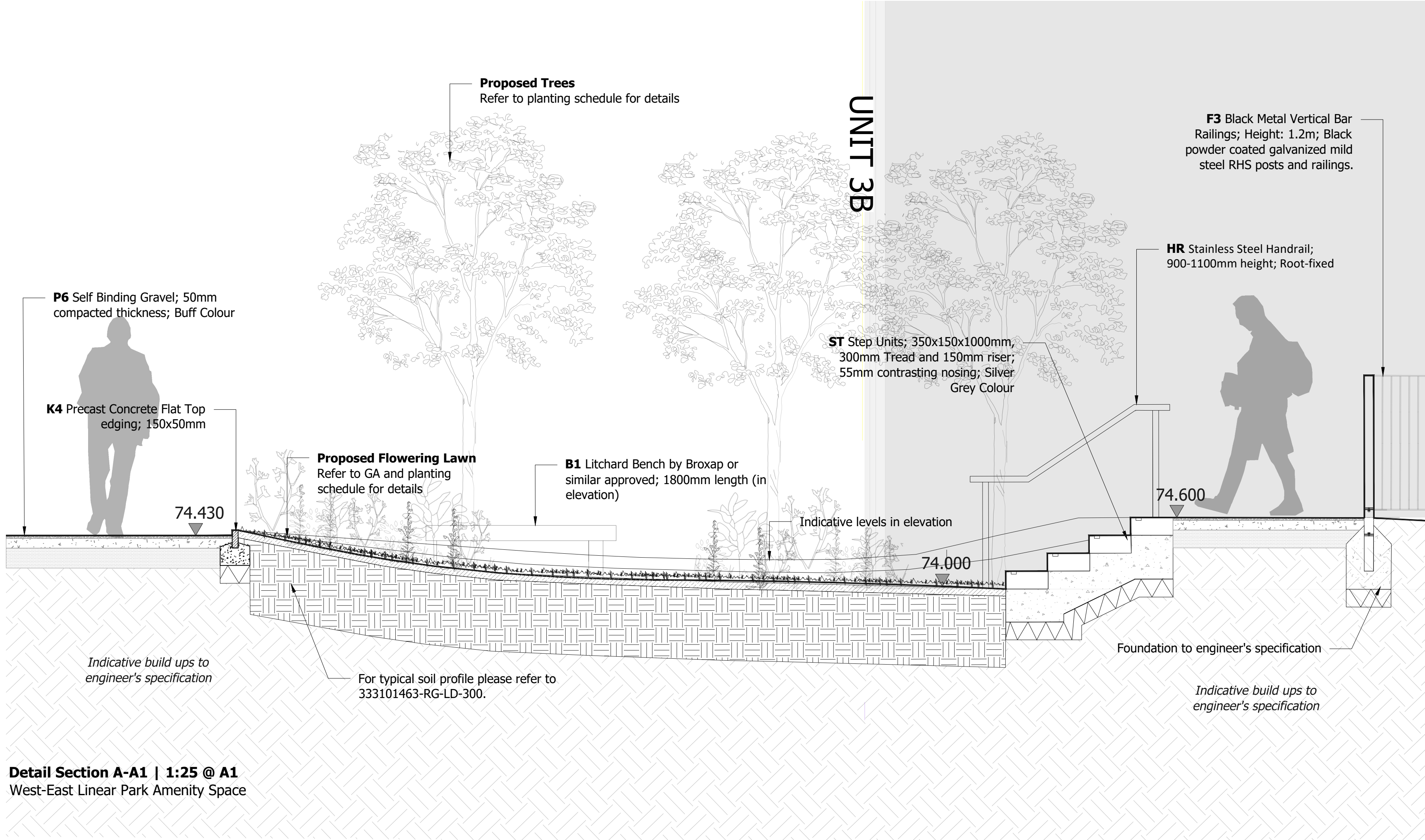


Revision	Date	Dwn	Ckd
T2	Update for final issue for Tender	01.05.25	CY DS
T3	Update for VE Issue	24.07.25	CY DS
T4	Update to P2 spec	10.12.25	CY DS

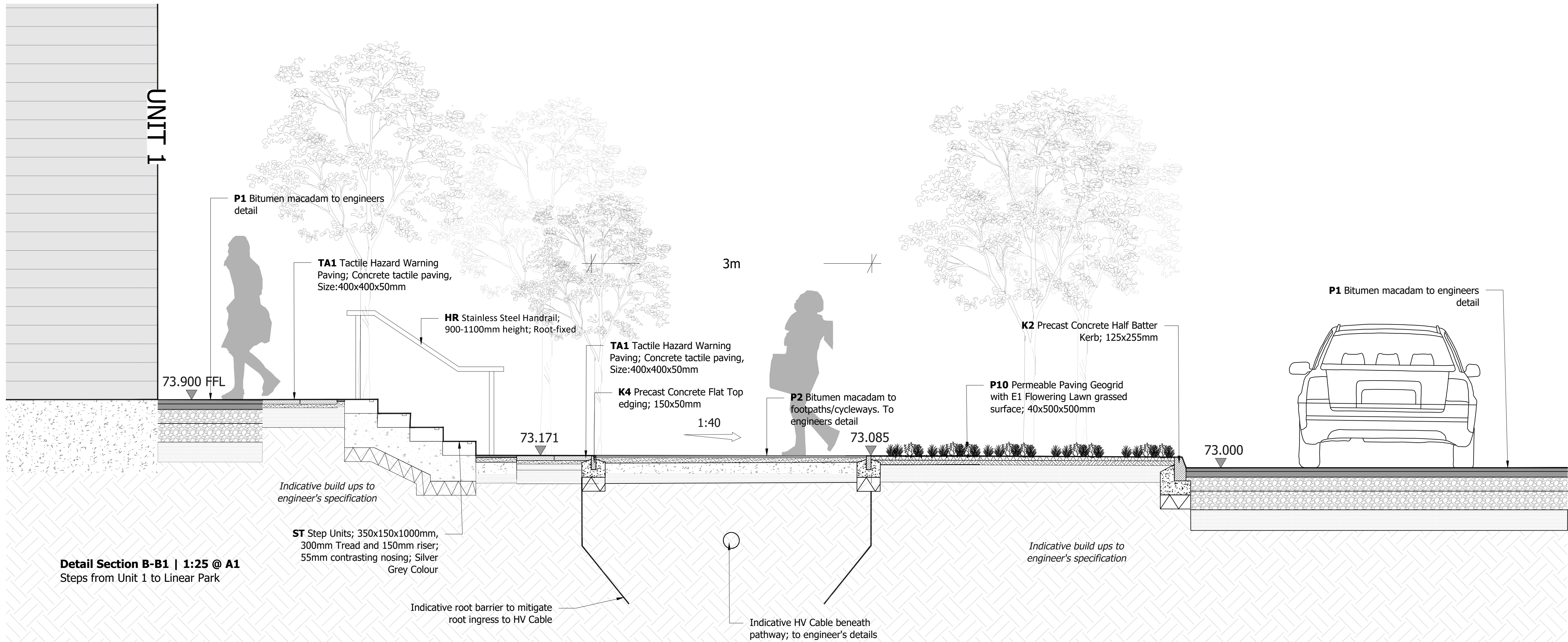
- NOTES:**
- Drawings are issued for Tender and not for Construction.
 - Drawings should be read in conjunction with other consultants information and cross referenced.
 - Full fabrication drawings are required for submittal. Written approval must be received from the Contract Administrator prior to commencement.
 - Drawings to be read in conjunction and cross referenced with Stantec NBS Specification.
 - For full details on planting information and planting schedules, refer to 333101463-RG-LD-400 Detailed Planting Plans and Schedule drawing series.
 - For full details on hard materials please refer to 333101463-RG-LD-200 drawing series.
 - Refer to 333101463-RG-LD-200 for material key.
 - All retaining walls to engineer's details and are indicatively shown.



Section Location Plan
A & B



Detail Section A-A1 | 1:25 @ A1
West-East Linear Park Amenity Space



Detail Section B-B1 | 1:25 @ A1
Steps from Unit 1 to Linear Park

TENDER

Project
Shinfield Park
Reading

Drawing Title
Detailed Landscape Sections
Linear Park Sheet 1 of 2

Date	Scale	Drawn by	Check by
14.04.2025	Varies@A1	CY	DS
Project No	Drawing No	Revision	
333101463	RG-LD-303	T4	

Stantec

Stantec UK Limited
The Blade
Abbey Square
Reading
RG1 3BE
T: 0118 9430 000



stantec.com/uk