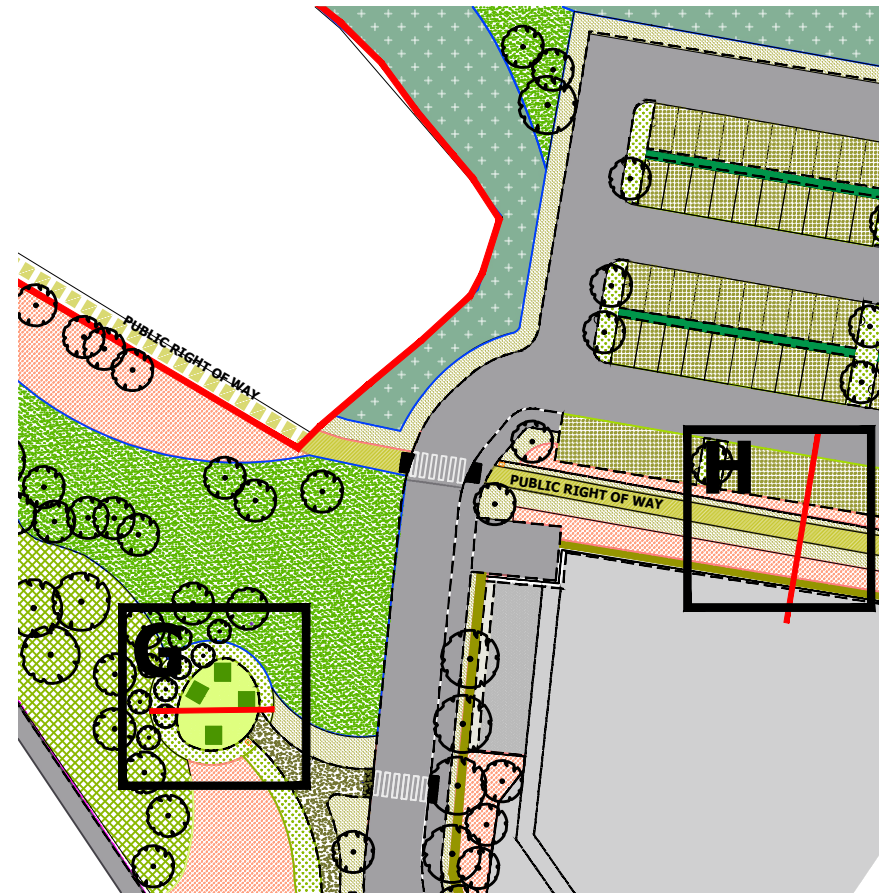
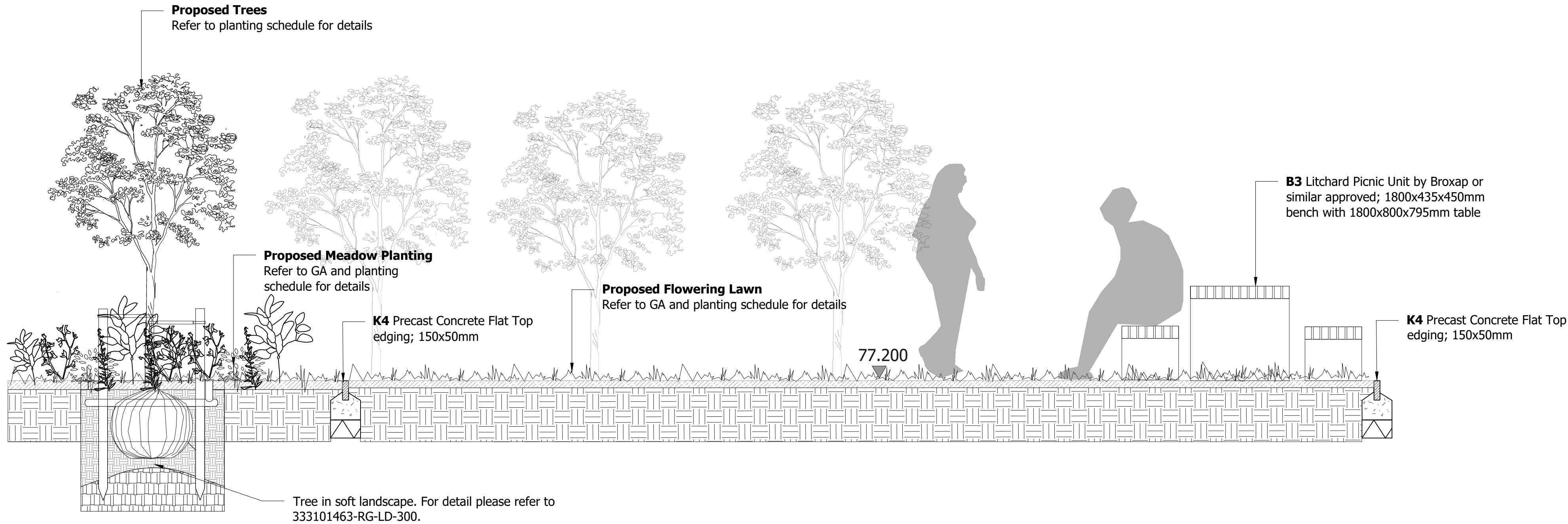


| The scaling of this drawing cannot be assured | | | | |
|---|------------------------------|----------|-----|-----|
| Revision | | Date | Dwn | Ckd |
| T3 | Adjustment to rootcell shown | 12.05.25 | CY | DS |
| T4 | Adjustment for VE Issue | 24.07.25 | CY | DS |
| T5 | No dig construction amended | 22.01.25 | CY | DS |

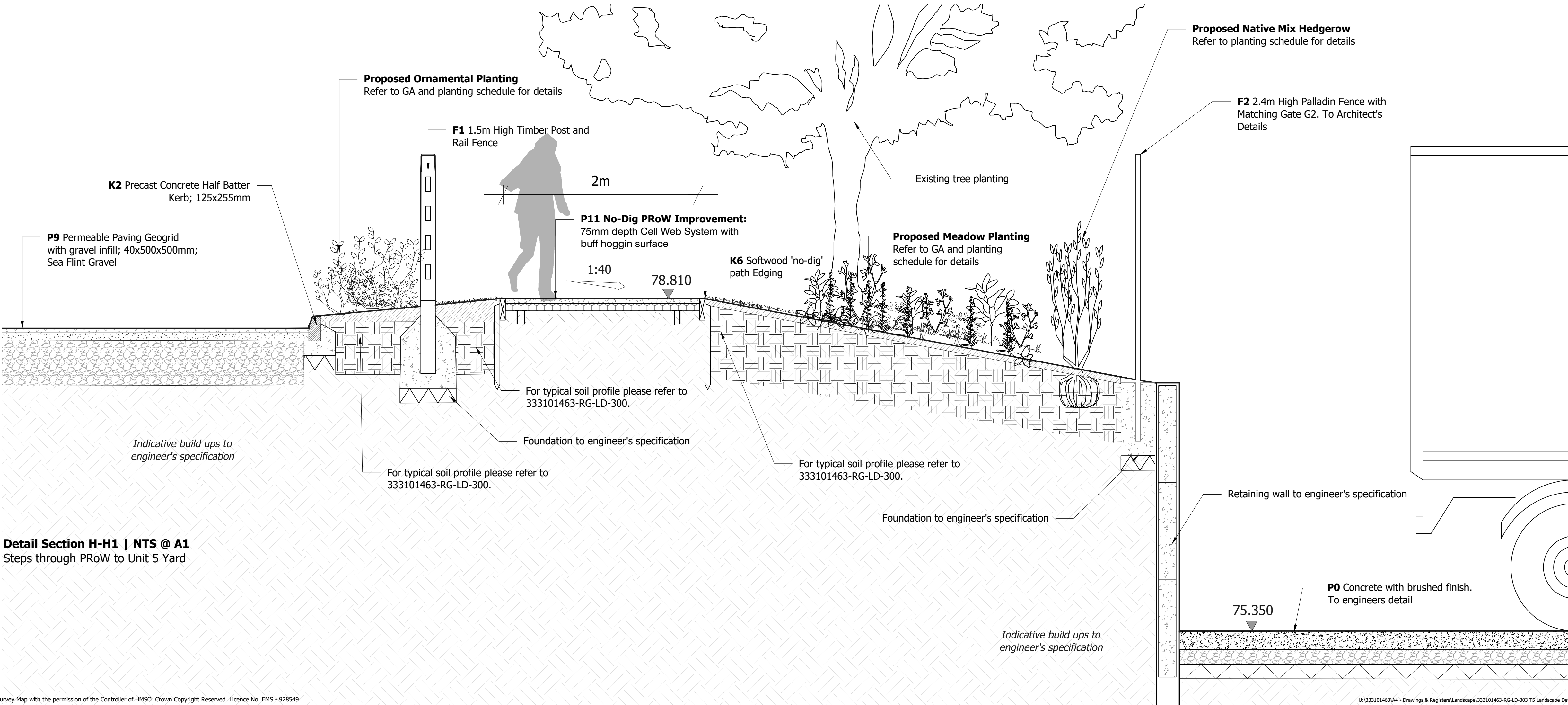
- NOTES:**
- Drawings are issued for Tender and not for Construction.
 - Drawings should be read in conjunction with other consultants information and cross referenced.
 - Full fabrication drawings are required for submittal. Written approval must be received from the Contract Administrator prior to commencement.
 - Drawings to be read in conjunction and cross referenced with Stantec NBS Specification.
 - For full details on planting information and planting schedules, refer to 333101463-RG-LD-400 Detailed Planting Plans and Schedule drawing series.
 - For full details on hard materials please refer to 333101463-RG-LD-200 drawing series.
 - Refer to 333101463-RG-LD-200 for material key.
 - All retaining walls to engineer's details and are indicatively shown.
 - For no-dig detail please refer to 333101463-RG-LD-103 PRoW Improvements Plan.dwg



Section Location Plan
G & H



Detail Section G-G1 | 1:25 @ A1
Section through Employee Amenity Space



Detail Section H-H1 | NTS @ A1
Steps through PRow to Unit 5 Yard

TENDER

Project
Shinfield Park Reading

Drawing Title
**Detailed Landscape Sections
Employee Amenity Area and PRow**

| | | | |
|-------------------------|-------------------------|----------------|----------------|
| Date 14.04.2025 | Scale Varies@A1 | Drawn by CY | Check by DS |
| Project No 333101463 | Drawing No RG-LD-306 | Revision T5 | |

Stantec

Stantec UK Limited
The Blade
Abbey Square
Reading
RG1 3BE
T: 0118 9430 000



stantec.com/uk