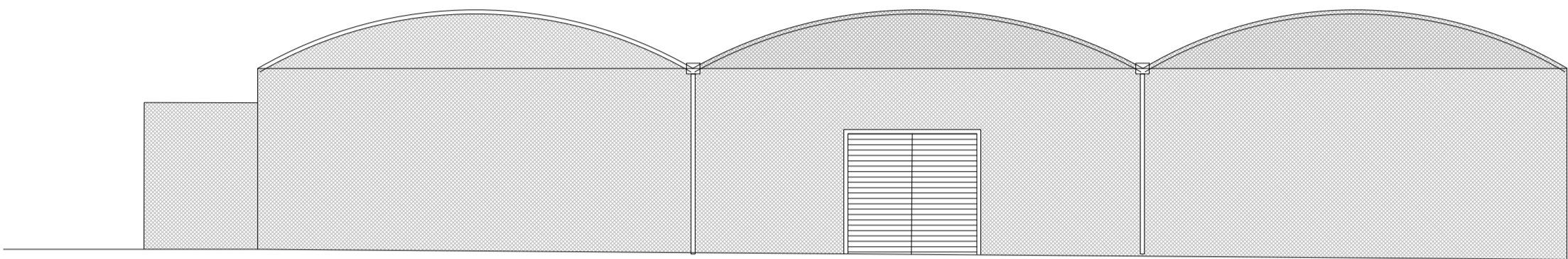
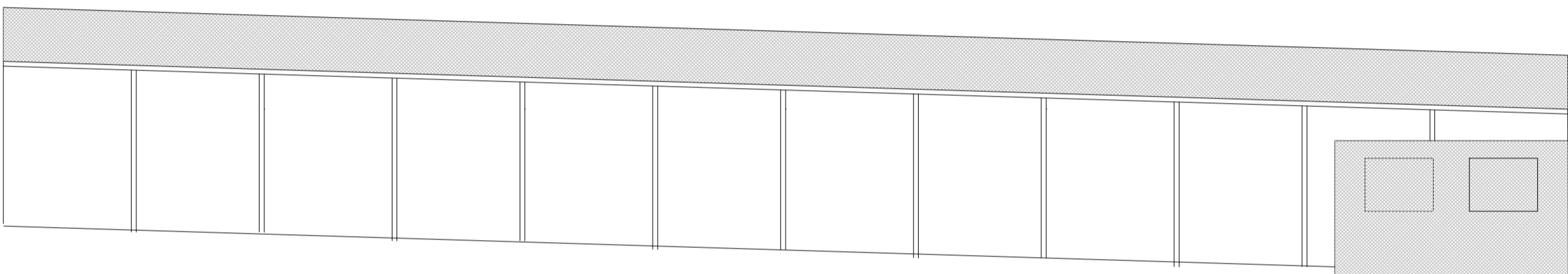


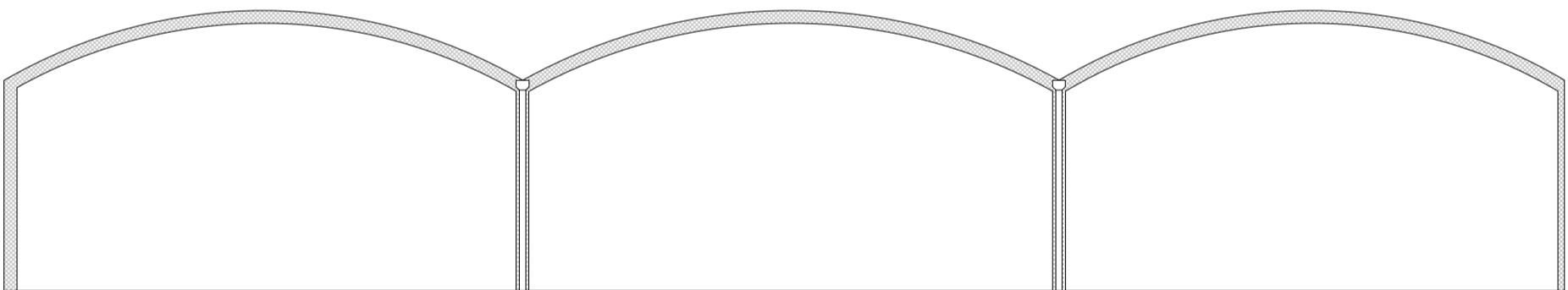
EXISTING



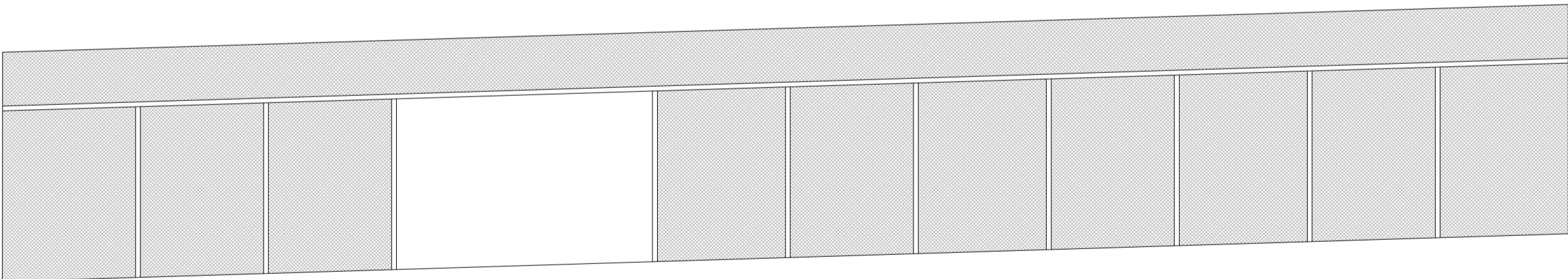
North Elevation



East Elevation



South Elevation



West Elevation

Garden Centre Building 3

Notes:

This drawing is the copyright of Arktec Ltd and has been sent to you in confidence, it must not be reproduced or disclosed to third parties without our prior permission.

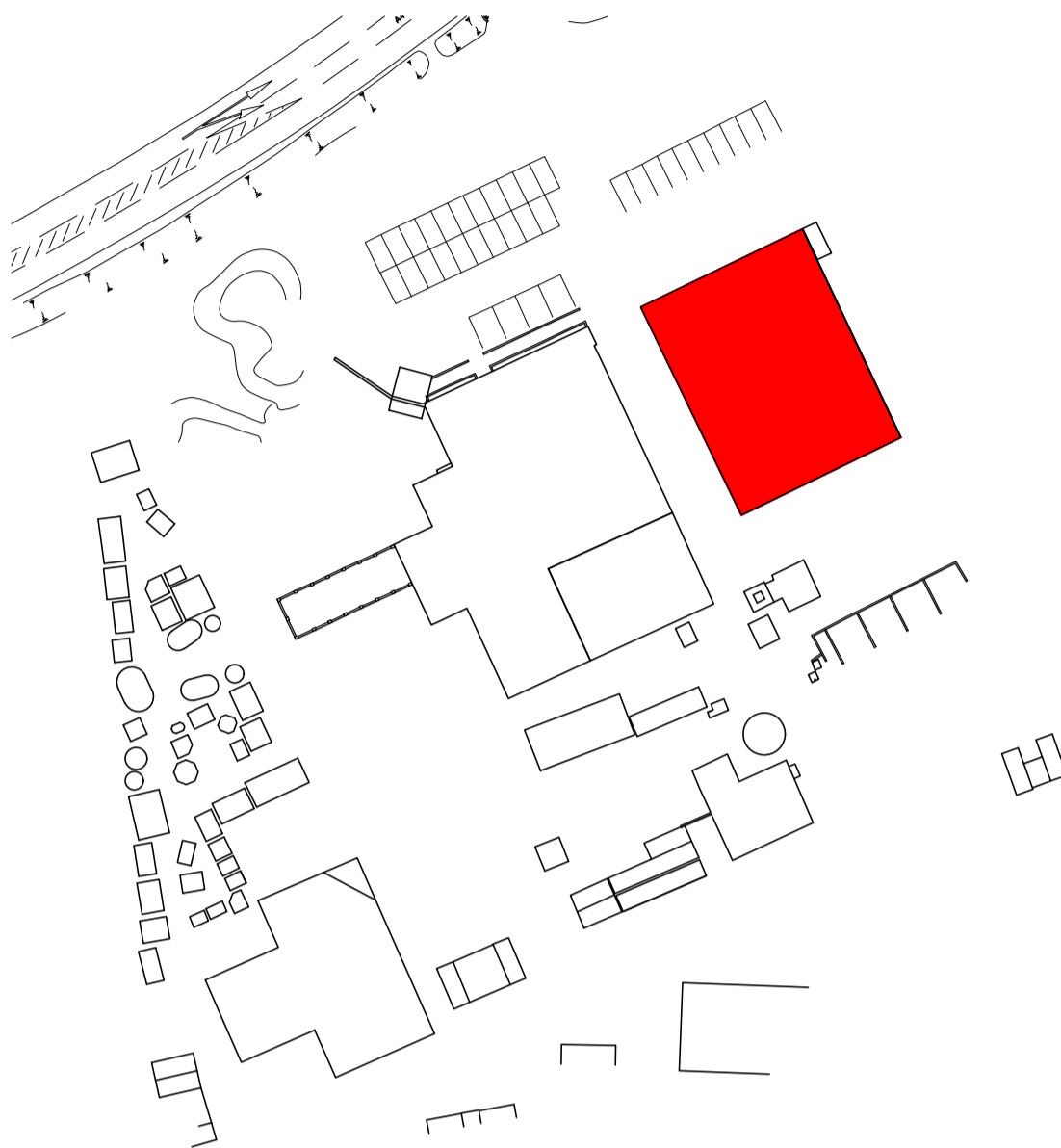
Do not scale from this drawing except for planning purposes.

All dimensions are in millimetres unless noted otherwise.

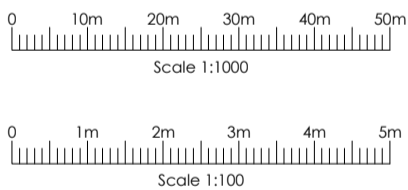
Any surveyed information incorporated on this drawing cannot be guaranteed as accurate unless confirmed by a fixed dimension.

This drawing is to be read in conjunction with all the relevant consultants, suppliers and manufacturers drawings and information.

SURVEYED INFORMATION ON THIS DRAWING HAS BEEN PRODUCED BY OTHERS.



KEY
Scale 1:1000 @ A1



-	-	-
Rev	Date	Details

PLANNING

ark tec Architectural Consultancy Lodge Farm Barn Elvetham Park Estate Fleet Road, Hartley Wintney Hampshire, RG27 8AS t: 01252 845335 f: 01252 845515 e: info@arktec.co.uk w: www.arktec.co.uk	Client:	WESTBOURNE HOMES	
	Project:	LADDS GARDEN CENTRE BATH ROAD, HARE HATCH	
	Drawing:	EXISTING BUILDINGS SHEET 4	
	Scale:	AS SHOWN	Date:
			09/09/25

Drawing Number:	Revision:
P25/09/S/133	-