



See Dwg Number SA00382-071-A-ELEV For Continuation

General Legend (Elevations):

Indicates Ancon brickwork support to Structural Engineer's details and specialist manufacturer's design.

Legend (Ventilation):

Red MEV air intake grille.

Green Hot water heat pump exhaust termination.

Blue Hot water heat pump supply grille.

Note: For typical termination details including fire stopping in weatherboarding, refer to drawing SA00382-###-A-###.

Roosting Box Legend:

Indicates location of proprietary bat box built into external leaf of masonry.

Indicates location of proprietary bird box built into external leaf of masonry.

Window Head & Sill Treatments:

Indicates window head with a contrasting 225mm soldier course header. Refer to CALA standard detail SA00382-A-###-DET.

Indicates window sill with a facing brickwork finish. Refer to CALA standard detail SA00382-A-###-DET.

Indicates render panel to window head. Refer to drawing SA00382-A-###-DET.

Indicates render panel to window sill. Refer to drawing SA00382-A-###-DET.

Indicates window head with a facing brickwork finish. Refer to CALA standard detail SA00382-A-###-DET.

Indicates 150mm high contrasting cut soldier course brick sill. Refer to drawing SA00382-A-###-DET.

General Legend (Elevations):

Indicates areas of facing brickwork to material legend.

Indicates areas of dark coloured smooth render panels to material legend. Refer to CALA standard details for confirmation of bed joint reinforcement and mesh to prevent cracking.

Indicates window & door references. For external door and window schedule.

Indicates location of safety glass. Please refer to the external door & window schedules for confirmation of specification etc.

Indicates external wall mounted light fitting to client's specification.

Indicates areas of clear low-e glazing.

Indicates areas of permanent obscure glazing. Pilkington stippolyte or similar minimum level 4.

Indicates roof tiles. Please refer to the materials schedule.

Indicates material reference. Please refer to materials legend.

Indicates code 4 lead flashing.

Indicates air bricks to ventilate sub-floor void. Refer to substructure plan for approximate locations.

Indicates movement joint. Movement joints have been positioned in accordance with the Structural Engineer's instructions.

Indicates building signage. Refer to communal signage plan for further details.

Indicates entry key pad.

Indicates rainwater pipe.

Indicates structural slab level.

Indicates reconstituted stone gable vent. Refer to CALA Materials schedule.

Indicates 215mm high contrasting brick soldier course.

General Notes:

01. Temporary works designers must ensure that the temporary works design has been approved by Building Control and/or the Structural Engineer where necessary.

02. All fittings to be to client's specification.

03. All movement joints are to be in accordance with the Structural Engineer's details & specification.

04. All lead work is to be carried out in accordance with the Lead Sheet Association handbooks.

05. Please refer to the Civil Engineer's drawings for confirmation of all ground levels.

06. Please refer to the client's material schedule for confirmation of all building products.

07. Please refer to the CALA Homes construction specification for full details and locations of all bed joint reinforcement.

Materials Legend (Continued):

Indicates Entrance canopy to be built on site & finished in single ply membrane.

Indicates store signage/anodised aluminium panels. Refer to CALA Homes materials schedule.

Indicates projecting feature contrasting brickwork corbel verge detail.

Materials Legend:

Indicates roof tiles. Refer to CALA Homes materials schedule.

Indicates cast stone feature gable vent. For colour refer to CALA Homes materials schedule.

Indicates cast stone coping.

Indicates blue/grey feature brickwork laid in horizontal/vertical soldier course.

Indicates 150mm diameter UPVC deepflow gutters. For colour refer to CALA Homes materials schedule & Material Site Plan, drawing numbers SA00382-### to ###-A-SITE.

Indicates facing brickwork laid stretcher bond with bucket handle mortar joints. Refer to CALA Homes materials schedule & Material Site Plan, drawing numbers SA00382-### to ###-A-SITE.

Indicates areas of dark coloured smooth render panel to material legend. Product TBC. Bed joint reinforcement to be provided above and below openings in the outer leaf (where render is present). Refer to CALA Homes materials schedule & Material Site Plan, drawing numbers SA00382-### to ###-A-SITE.

Indicates UPVC flush casement windows. For colour refer to CALA Homes materials schedule & Material Site Plan, drawing numbers SA00382-### to ###-A-SITE. Clear or obscured glazing to be provided as illustrated.

Indicates code 4 lead flashing lapped minimum 150mm up face of brickwork and lapped into mortar joint to LSA guidance. Provide cavity tray and weep holes in accordance with the construction specification. Roof abutments to receive preformed stepped cavity trays and lead soakers. Refer to the NHBC Risk Guide for cavity trays.

Indicates UPVC 89mm diameter rainwater pipes. For colour refer to CALA Homes materials schedule & Material Site Plan, drawing numbers SA00382-### to ###-A-SITE.

Indicates UPVC fascias and soffits. For colour refer to CALA Homes materials schedule & Material Site Plan, drawing numbers SA00382-### to ###-A-SITE.

Indicates communal entrance door to CALA Homes specification.

Indicates curtain walling system to ground floor commercial units.

Indicates solid aluminium cycle store door to CALA Homes specification.

Indicates louvre aluminium refuse store door to CALA Homes specification.

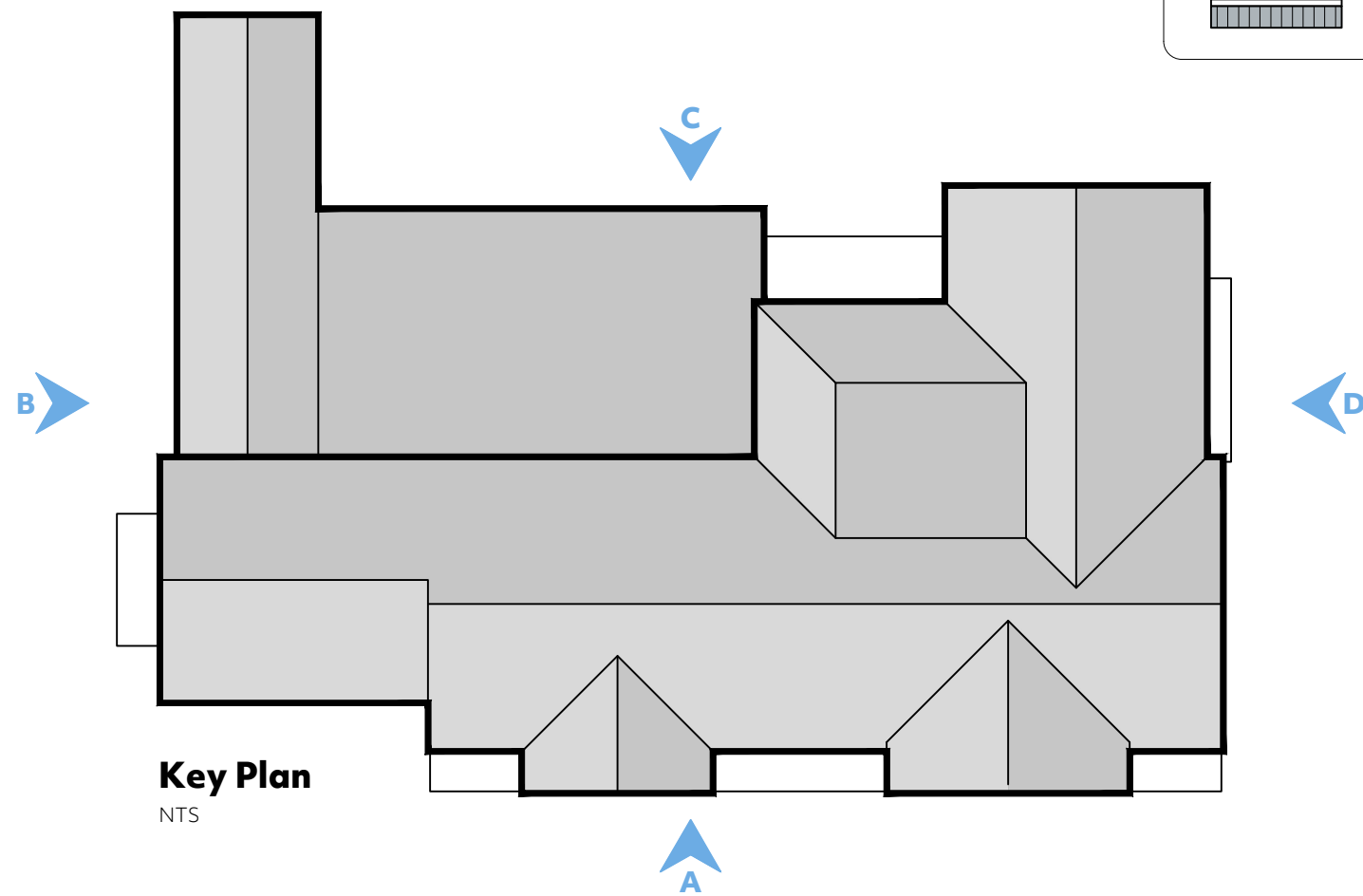
Indicates galvanised and powder coated balcony balustrade, RAL TBC. For typical details, refer to SA00382-A-###-DET.

Indicates galvanised and powder coated Juliet balcony.


Indicates galvanised and powder coated steel balcony structure. For colour refer to CALA Homes materials schedule & Material Site Plan, drawing numbers SA00382-A-### to ###-DET.

UPVC rainwater hopper, colour in accordance with materials schedule.

15mm projecting contrasting soldier course brick feature.



P1	10.10.25	Preliminary Issue
Rev	Date	Amendment

<u>Client:</u>	CALA Homes (Thames) Ltd.				
<u>Project:</u>	Neighbourhood Centre, Finchampstead				
<u>Drawing:</u>	Front Elevation (A) (Sheet 01)				
		hello@projectarch.co.uk		+44 (0) 1245 922160	
		<u>Status:</u> Preliminary			P1
<u>Date:</u>	Sept' 2025	<u>Scale:</u>	1:50 @ A1		
		<u>Dwg No:</u> SA00382-070-A-ELEV			
<small>© This drawing is the copyright of project.architecture ltd. It shall not be in any way used or reproduced without their prior written consent. All dimensions are to be checked on site or in the workshop prior to commencing any work. Do not scale from this drawing. Work only to figured dimensions. Any perceived discrepancies are to be reported to the architect at the earliest opportunity.</small>					