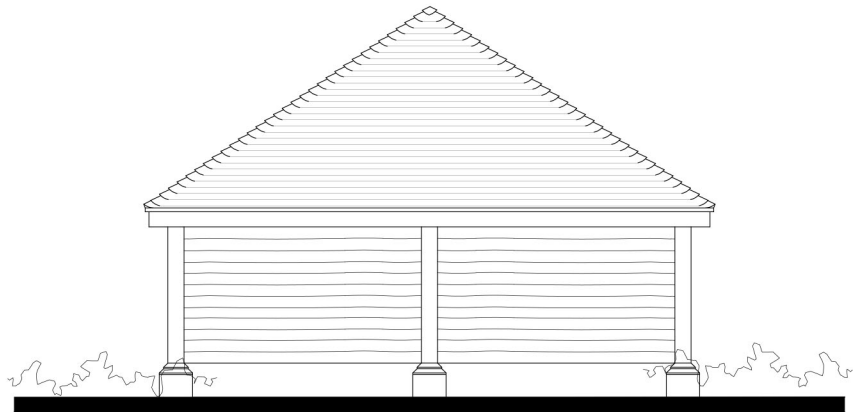
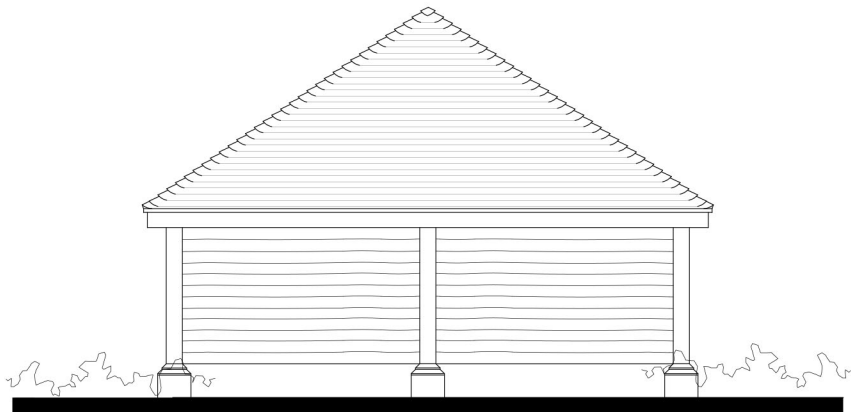




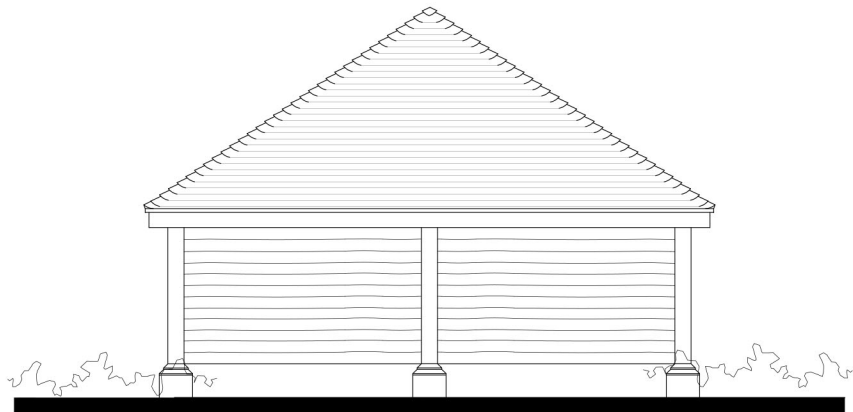
PLOT 1 CAR PORT - FRONT ELEVATION



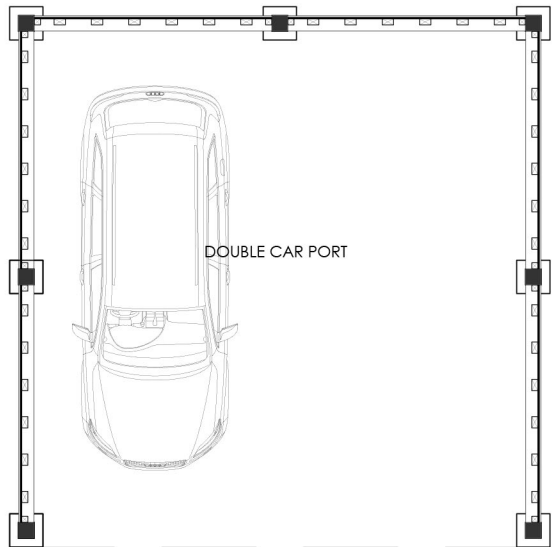
PLOT 1 CAR PORT - SIDE ELEVATION



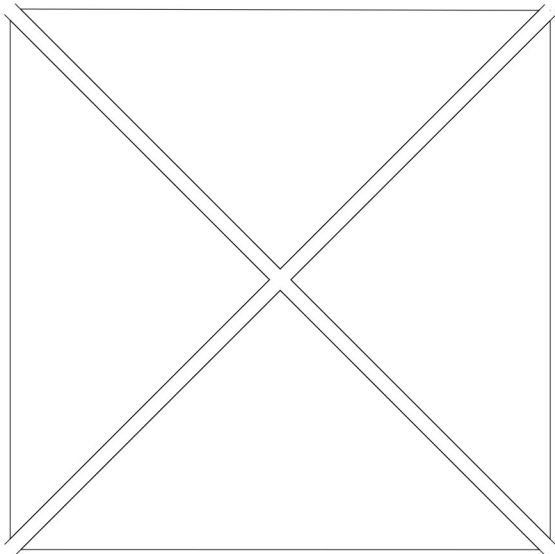
PLOT 1 CAR PORT - REAR ELEVATION



PLOT 1 CAR PORT - SIDE ELEVATION



CAR PORT - FLOOR PLAN



CAR PORT - FLOOR PLAN

Notes:

This drawing is the copyright of Andrew Malcolm Ltd and has been sent to you in confidence, it must not be reproduced or disclosed to third parties without our prior permission.

Do not scale from this drawing except for planning purposes.

All dimensions are in millimetres unless noted otherwise.

Any surveyed information incorporated on this drawing cannot be guaranteed as accurate unless confirmed by a fixed dimension.

This drawing is to be read in conjunction with all the relevant consultants, suppliers and manufacturers drawings and information.

ALL FLOOR AREAS GIVEN ARE APPROXIMATE AT THIS STAGE IN THE DESIGN PROCESS.



| | | |
|-----|----------|------------------------|
| A | 03/12/25 | Drawing Scales Updated |
| Rev | Date | Details |



ANDREW MALCOLM
ARCHITECTURE

Building B
Watchmoor Park,
Riversdie Way, Camberley,
Surrey. GU15 3YL

t: 01276 402 370
e: info@andrew-malcolm.co.uk
w: www.andrew-malcolm.co.uk

| | | |
|----------|--|----------------|
| Client: | FORAYS HOMES | |
| Project: | LAND ADJACENT TO POOLE HOUSE, LODGE ROAD, HURST | |
| Drawing: | PLOT 1 CAR PORT PROPOSED PLANS & ELEVATIONS | |
| Scale: | 1:100 @A3 | Date: 23/08/25 |

Status:

PLANNING

Drawing Number:

P78/111

Revision:

A