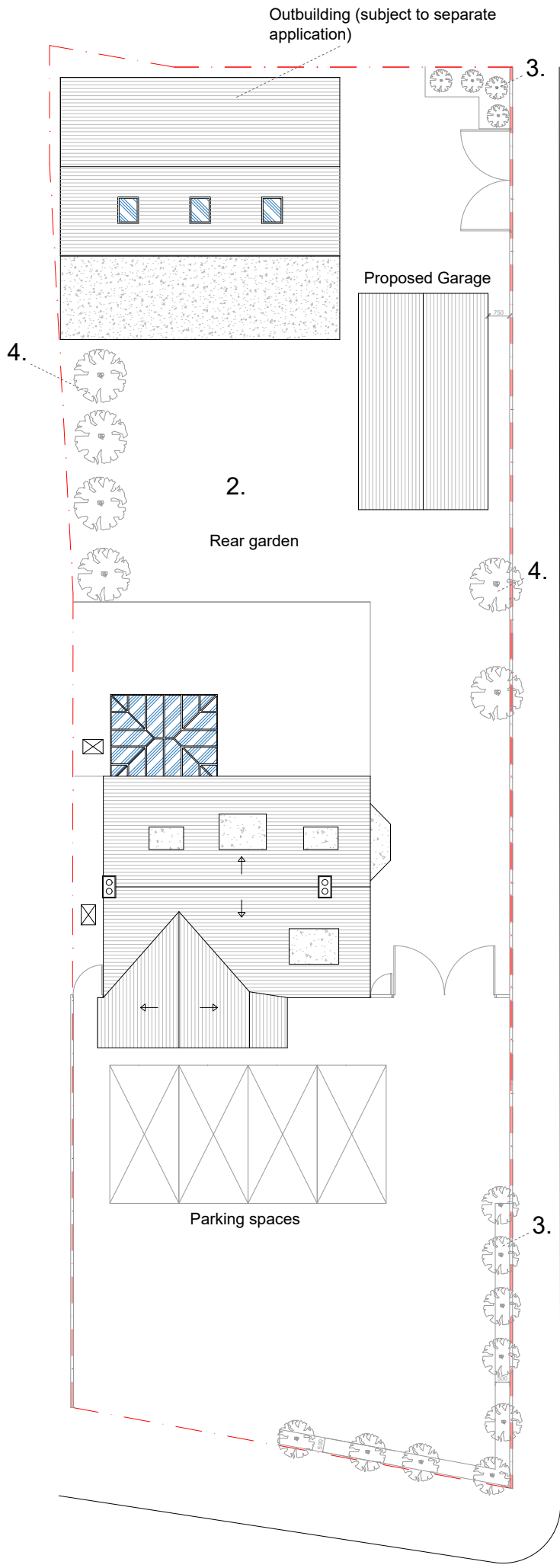




Proposed landscape scheme:

1. Portuguese Laurel (stock 0.6m; mature height 4.0m, spacing 0.8m)
2. Lawn Turf
3. Picea Glauca Conica (Dwarf Alberta Spruce; stock size 0.8m; 2.1m in height mature; 1.0m apart)
4. Thuja occidentalis Brabant (Stock size 1.5m; mature height 10m; spacing 1.2m, spread 2.5m)



Tree - stock:

- Ordinary nursery stock trees to be supported by No. 1, 50mm round stake, 1300mm long, driven in to a depth of 800mm, stakes should extend no higher than 400-500mm above ground level.

Tree - planting

- Excavate pit of 800mm diameter by 600mm deep, or 150mm wider than root spread (base lightly broken up and free draining, remove all excavated material);
- Tree planted at same depth as at the nursery;
- Topsoil - B.S. 3882: 2015 - layers maximum 100mm to the excavated pit and lightly consolidate;
- Protective root barriers provided wherever required, next to hard surfaced areas;
- Tree fixed with Toms cushioned tree tie (single nail) - max 25mm from top of stake fixed;
- Adjust ties on the trees (max every 12 months);
- Remove the stakes and ties 2-3 years after planting.

5 Year period of maintenance

- 1000mm diameter base area kept clear of all grass growth, weeds, or scrub vegetation, covered with 50mm medium grade bark mulch;
- The planting bed to be maintained weed free, in healthy condition and tidy;
- Any damaged or diseased plant, shall be replaced with a similar alternative;
- Keep all mulched areas free of weeds;
- Provided mulch to be filled up to 50mm depth to maintain cover;
- Pests treatment provided;
- Organic fertiliser provided in order to enhance plant establishment;
- Watering - All planting to be regularly watered through the first 2 growing seasons (Apr-Oct) and as required for the following 3 years, providing 20 litres of water weekly during the growing season (increasing or decreasing depending on weather).

Shrubs planting

- Excavate a planting hole at suitable depeth and circa 150mm wider than the root spread;
- Plants to be positioned uprightl
- Carefully return excavated topsoil around evenly spread roots;
- Apply medium grade bark mulch to a min. depth of 50mm to the planted areas (or seasoned chipped wood).

The landscape works in accordance with the British Standard (materials, operations on site and management), compliant with:

1. B.S. 3936: 1992 part 1 'Nursery Stock';
2. B.S. 4428: 1989 specifications;
3. B.S. 5837: 2012 'General landscape operations'.

Notes

1. All materials to match existing unless otherwise noted.
2. Do not scale for the construction purposes.
3. The contractor must verify all dimension on site prior to commencement of works.
4. This document is copyright of the originator and must be treated as confidential.

Project
20 Culver Lane,
Reading, RG6 2DT

Drawing title
Proposed Landscaping
plan

Drawing no
20

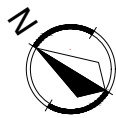
Rev
A

Scale
1:200 @ A2

Date
Oct 2025



1 Right Plan
1rightplan@gmail.com
07955 449 285



Proposed Landscaping Plan

0 2 20 metres