

# astra

office interiors ltd

---



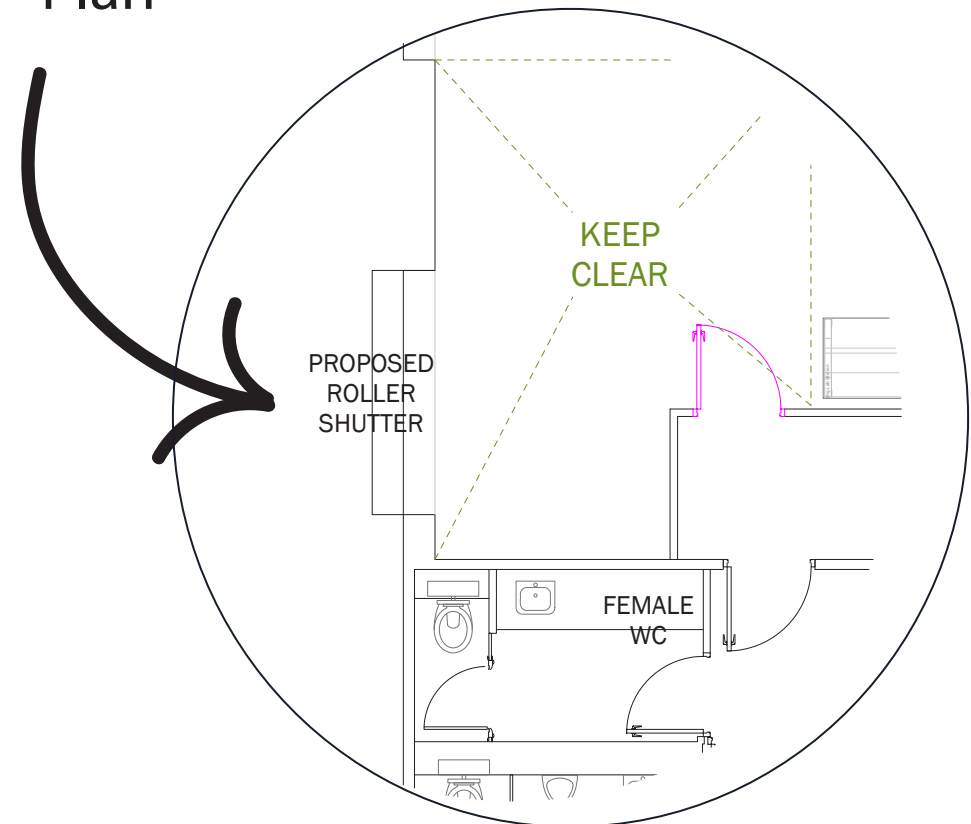
**Riedel Communications Ltd**  
Ground Works



# Specification

- The proposal is to remove an existing ground floor window, lower the brickwork below the window and install a new roller shutter door.
- The existing window opening lintel and reveals will not be altered.
- The existing raised ground floor will be removed and the ground floor slab below then used for light storage.
- We can confirm that these alterations will be structurally acceptable.
- The storage loads to the ground floor should be limited to no more than 250 kg per square metre, unless further information is available.
- The car park should be extended using the following build up;
  - 25mm of 6mm dense wearing course
  - 50mm of 20mm dense base course
  - Minimum 225mm of type 1 sub base for CBR greater than 5. For lower CBR values greater thicknesses of sub base will be required, shown in the plan below.

## Plan



# Ariel View

Area to be tarmacked - width of one parking bay x 2m  
Located as seen below in red.



astra  
office interiors ltd

---

Unit 9 ▪ Campbell Court Business Park ▪ Bramley ▪ Tadley ▪ Hampshire ▪ RG26 5EG  
t. +44 (0)1256 301880 ▪ f. + (0)1256 301881 ▪ [www.astraofficeinteriors.co.uk](http://www.astraofficeinteriors.co.uk)