



SHINFIELD PARK, READING

PLANNING REFERENCE: 250415

EXTERNAL MATERIALS
REPORT FOR DISCHARGE
OF PLANNING CONDITION 5

5704-CA-00-ZZ-RP-A-06001

WRENBRIDGE

Rev.
PL1 – FIRST ISSUE 12/01/2026

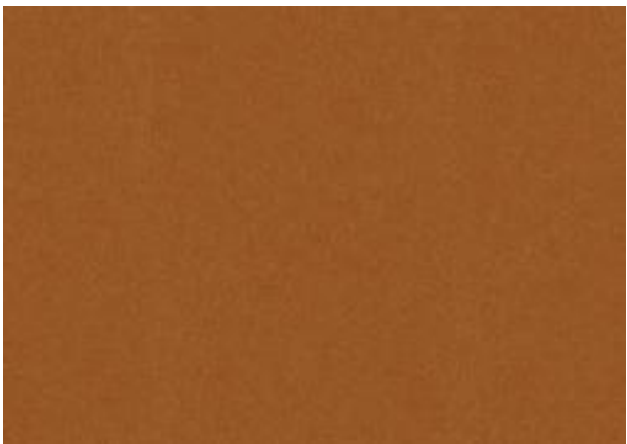
External Building Colours



RAL 9006 'Metallic Silver'
Cladding to loading area and secondary elevations.



RAL 7016 'Anthracite Grey'
Cladding to the loading area.



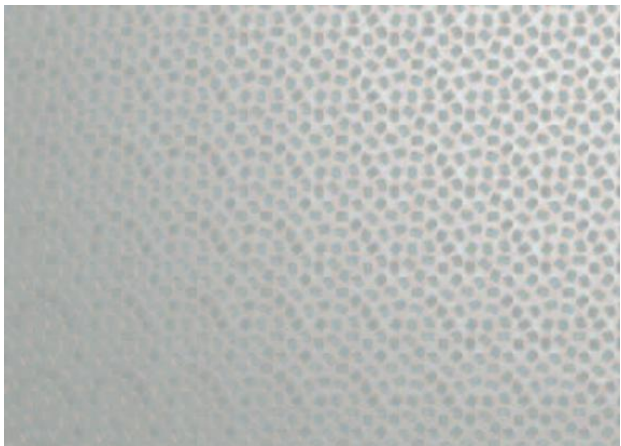
'Seren Copper'
Aluminium Powder coated effect to Portico.



RAL 9007 'Orion'
Parapet cladding

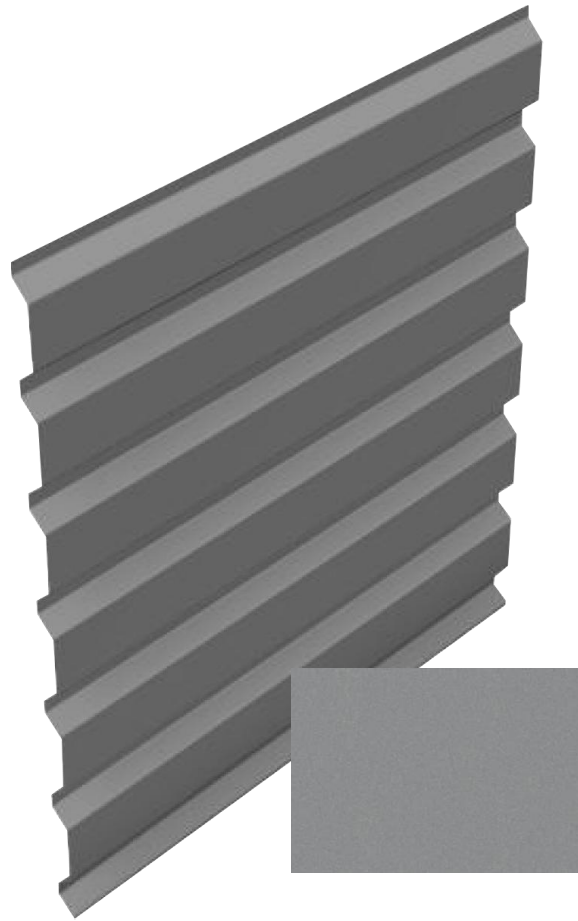


'Zeus'
Cladding to reception elevations



RAL 7038 'Goosewing Grey'
Under the Portico to the reception entrance for signage location.

External Surface Materials



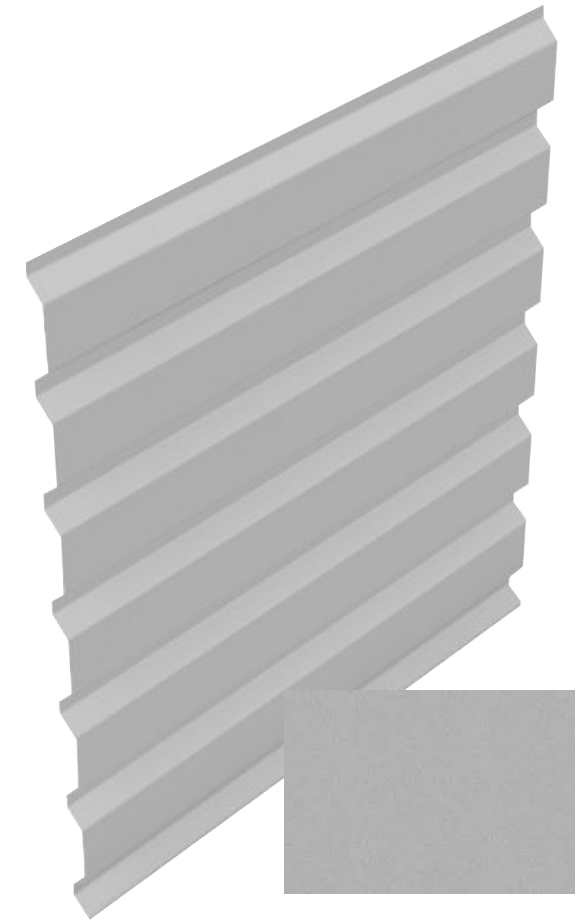
1 RAL 9007 'Orion'
Trapezoidal Cladding profile ,
horizontal laid. Parapet cladding.



2 Colour 'Zeus'
Flat profile panels, vertical laid.
Cladding to reception elevations



3 RAL 7016 'Anthracite Grey'
1m wide Trimo cladding panels laid
horizontally.



4 RAL 9006 'Metallic Silver'
Trapezoidal Cladding profile ,
horizontal laid. Parapet cladding.

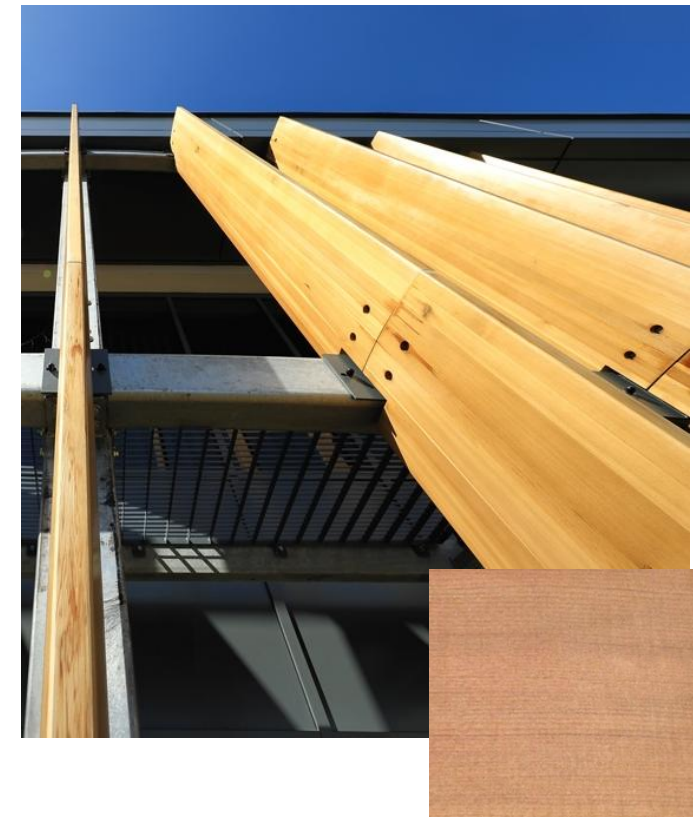
External Surface Materials



5 Aluminium framed clear glazed curtain wall.
Frame in RAL 7016 'Anthracite Grey'.

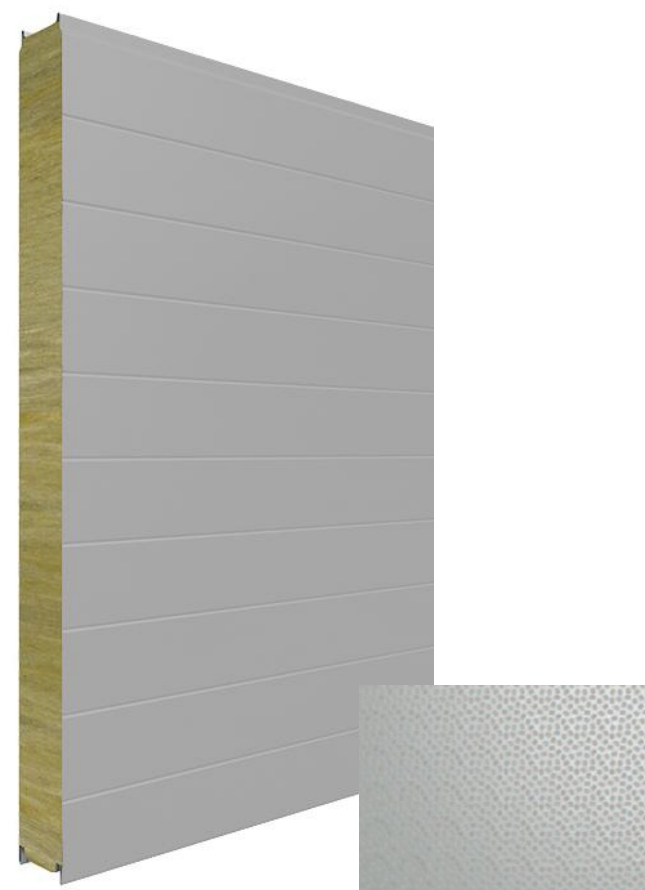


6 Aluminium powder coated
Bronze Effect Portico

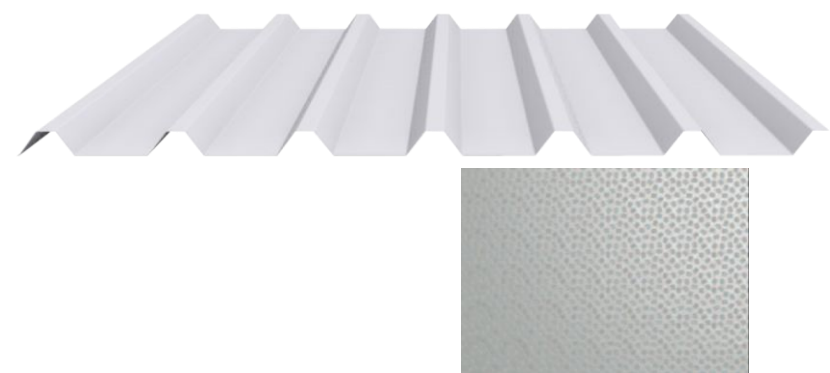


7 Vertical timber fins to curtain walling.

External Surface Materials



8 RAL 7038 'Goosewing Grey'
Flat panel under the Portico to the
reception entrance for signage location.



9 RAL 7038 'Goosewing Grey'
Trapezoidal cladding profile to roof.

External Surface Materials



10 Dock levellers in RAL 7016 'Anthracite Grey'.

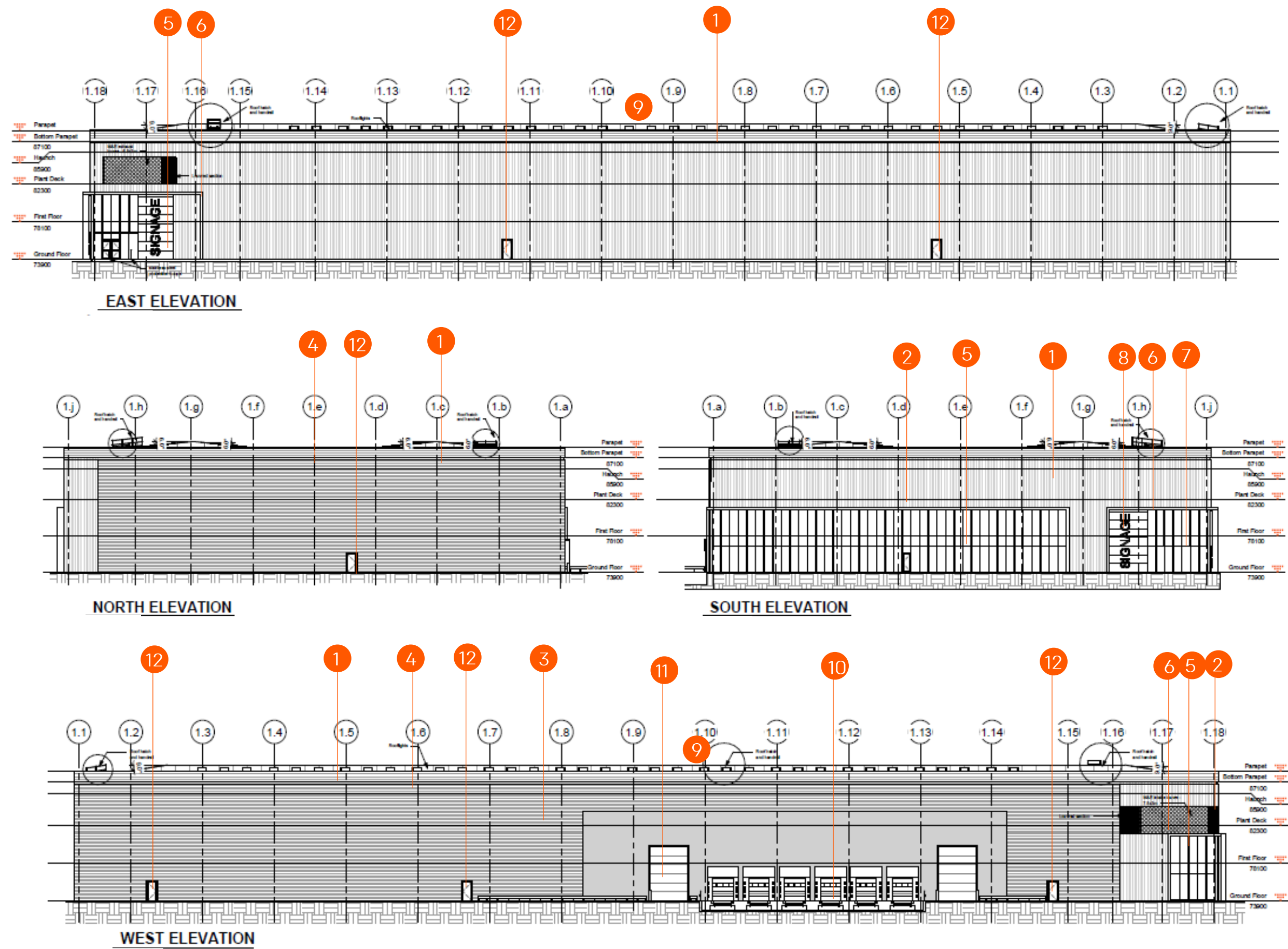


11 Loading Doors in RAL 7016 'Anthracite Grey'.

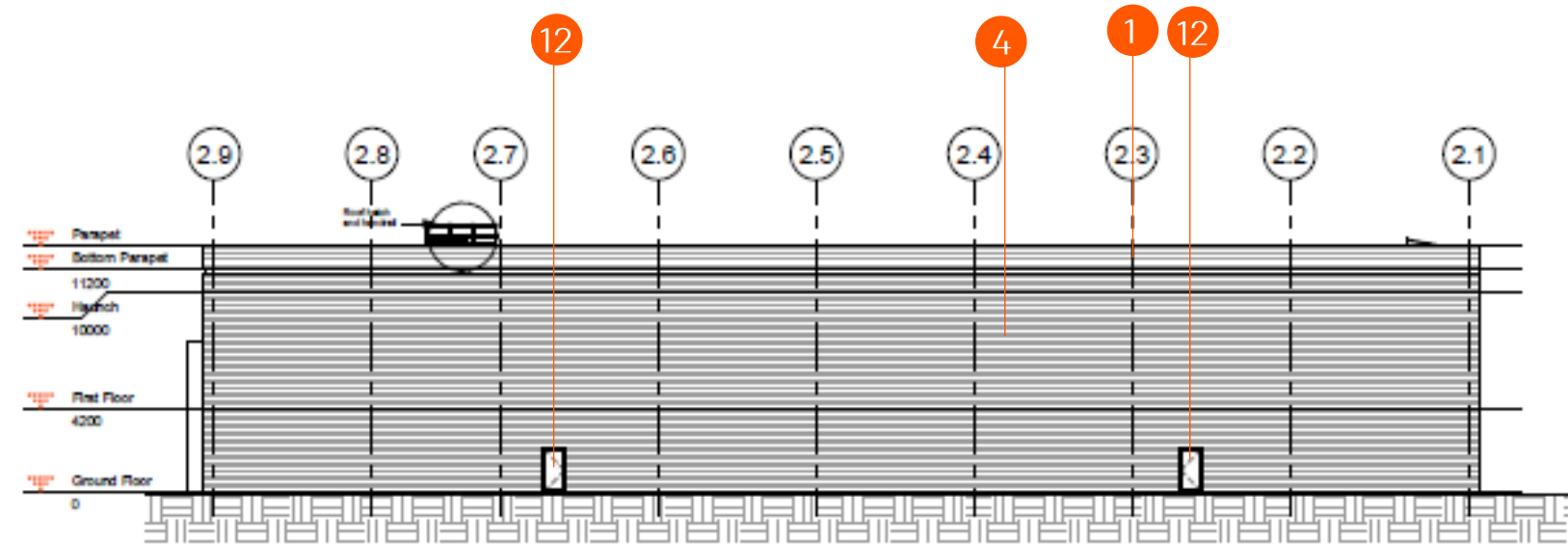


12 Personnel doors in RAL 7016 'Anthracite Grey'.

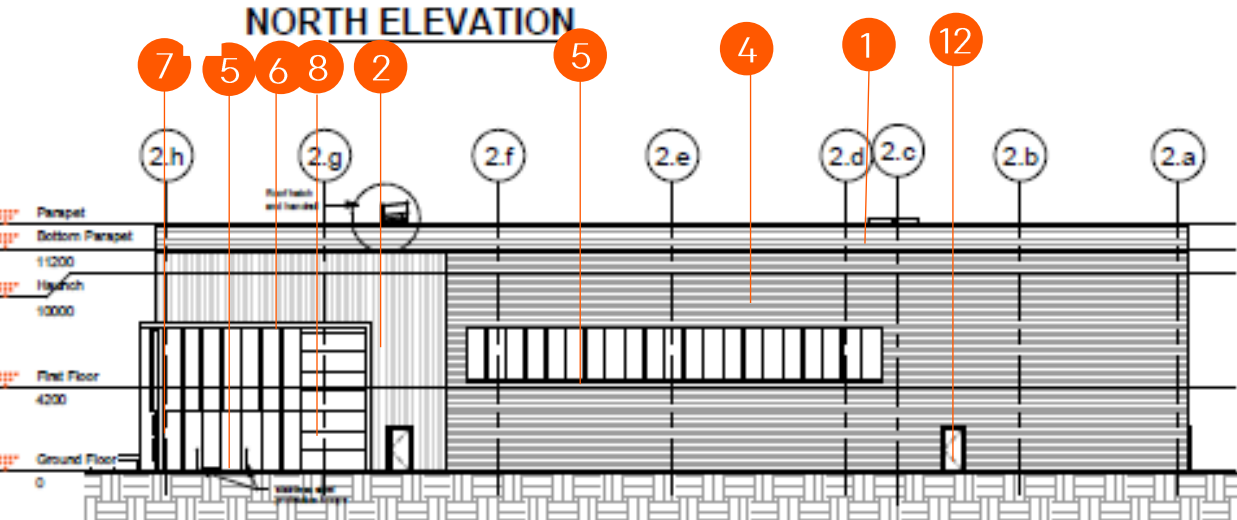
External Facing Materials - Unit 1



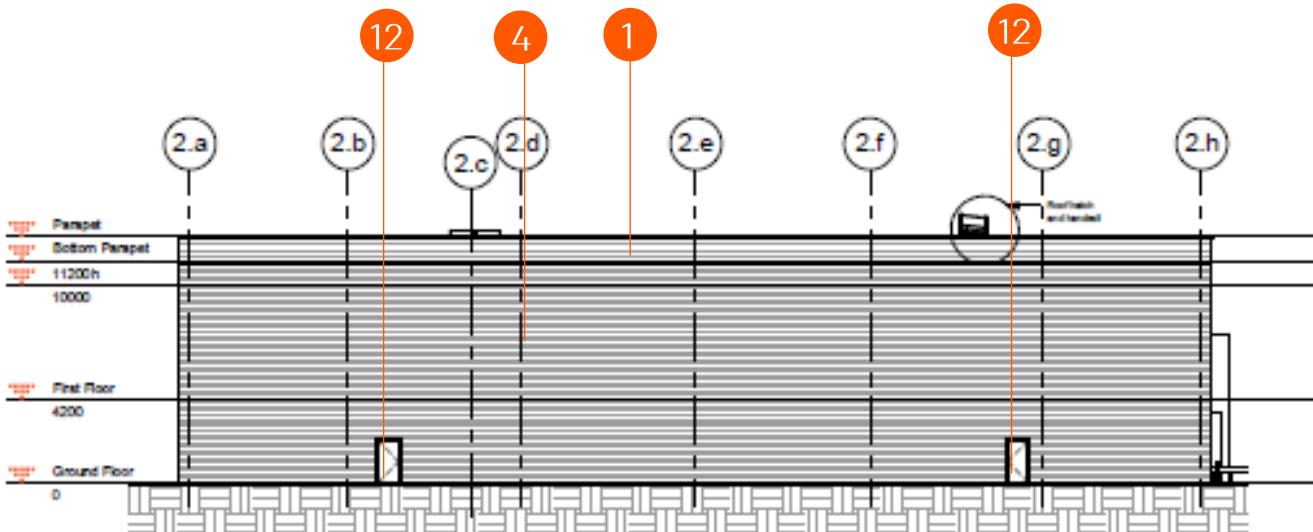
External Facing Materials - Unit 2



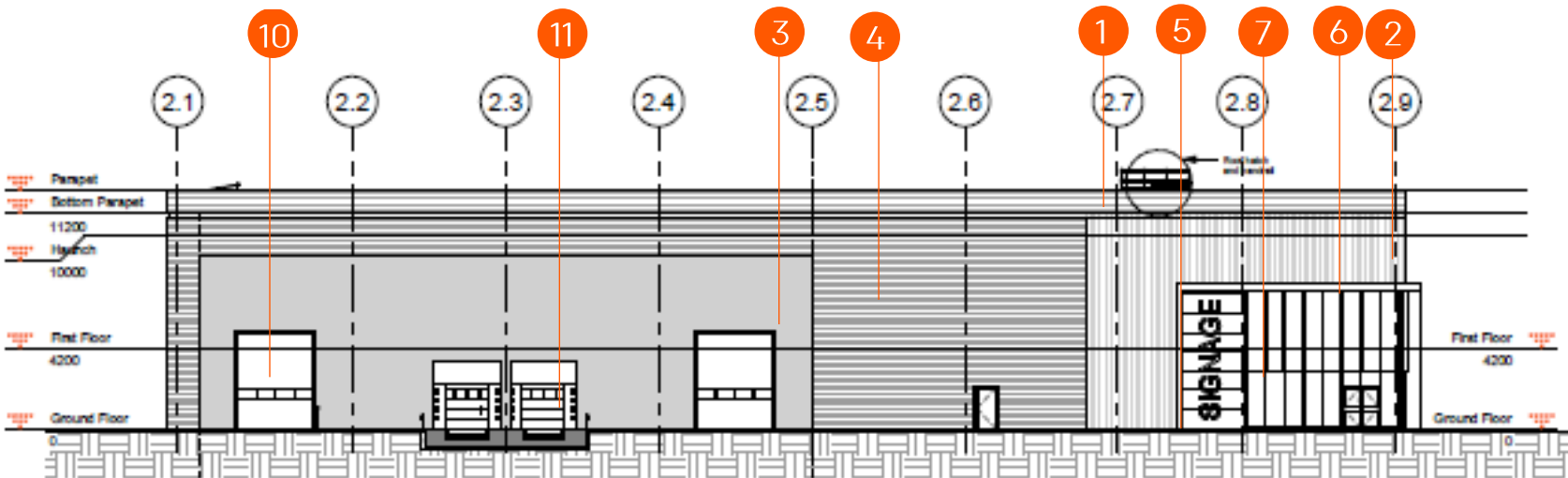
NORTH ELEVATION



EAST ELEVATION

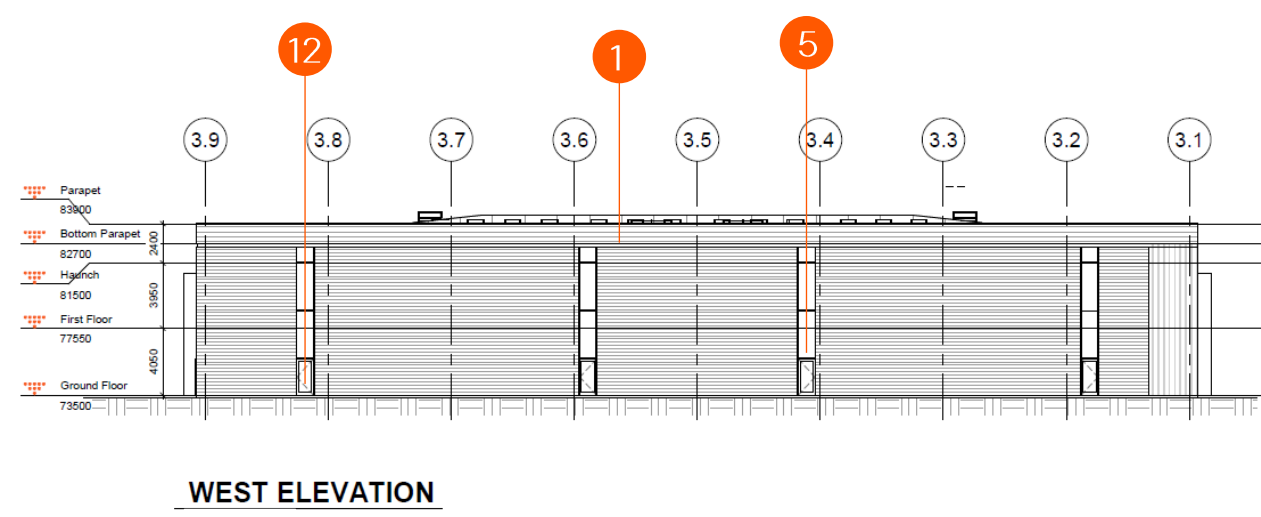
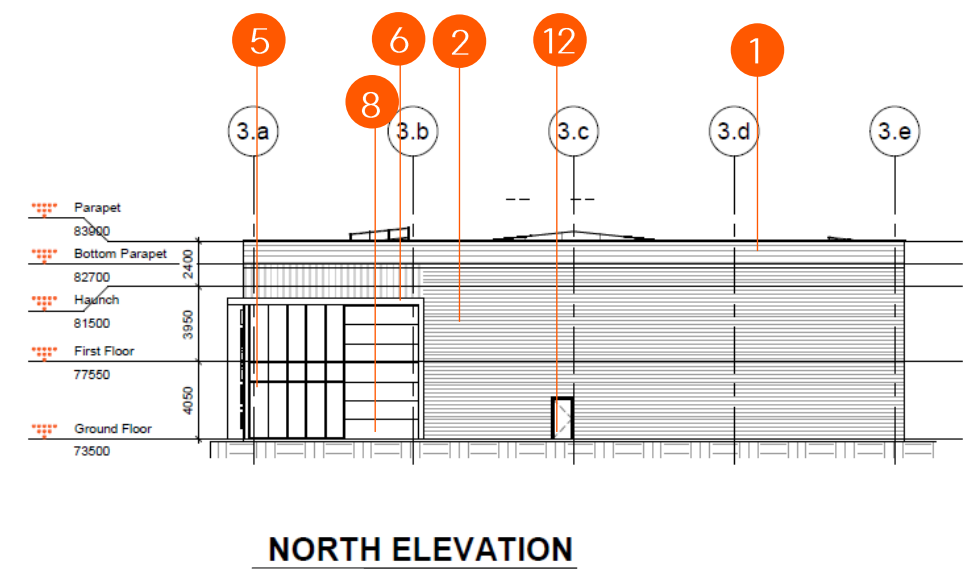
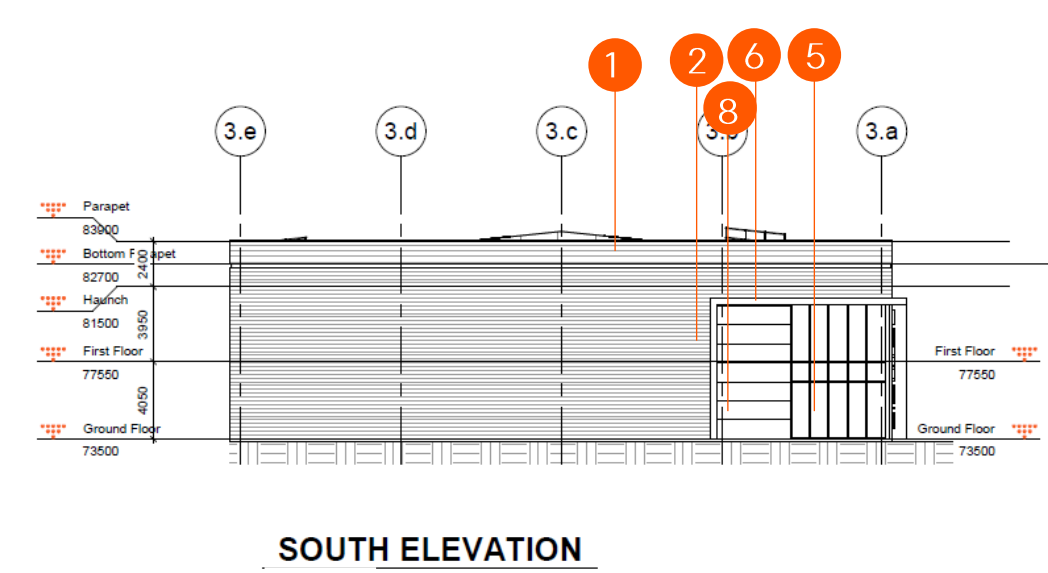
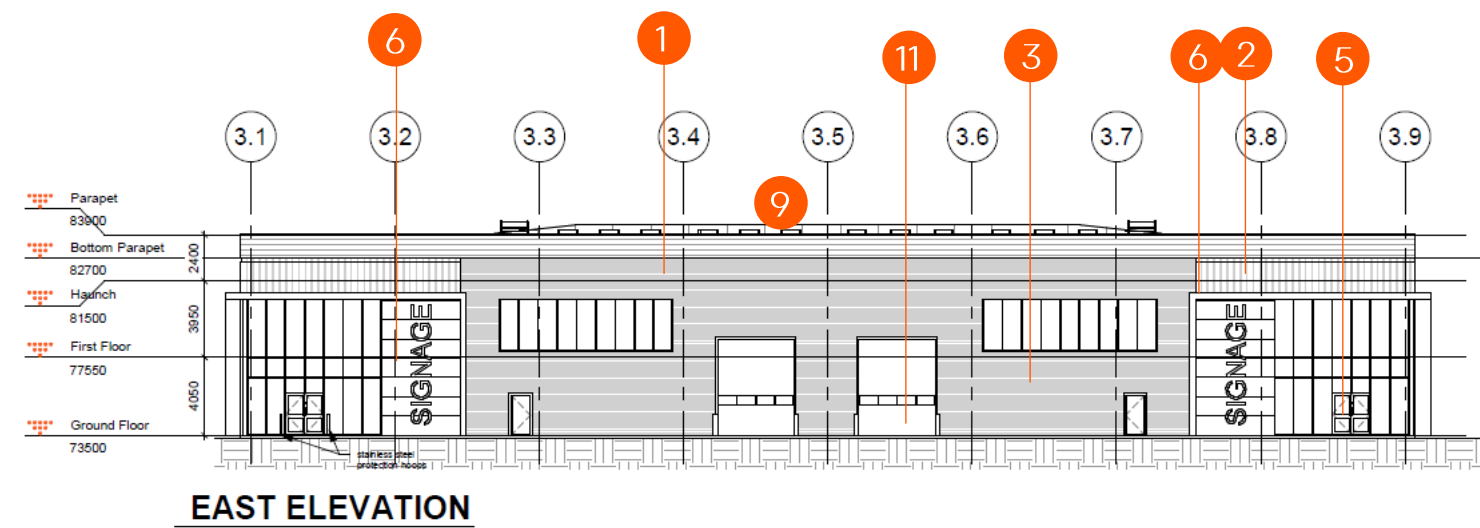


WEST ELEVATION

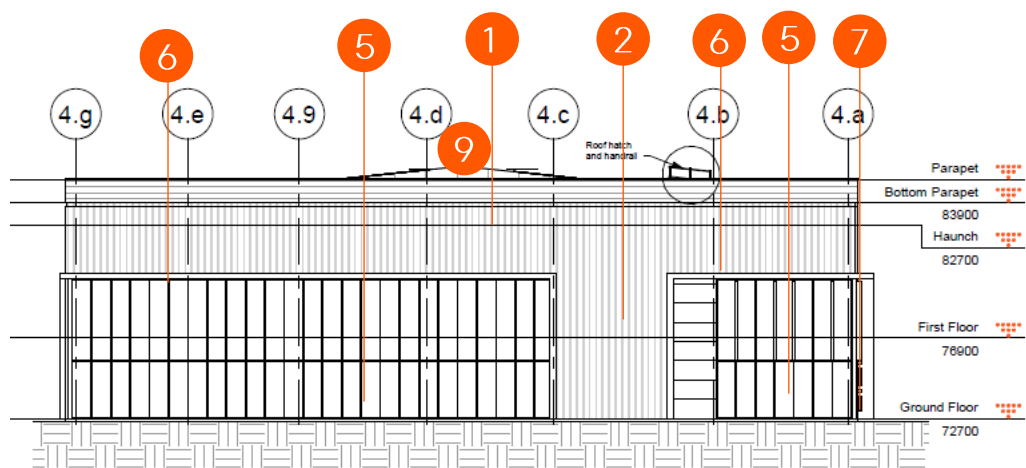


SOUTH ELEVATION

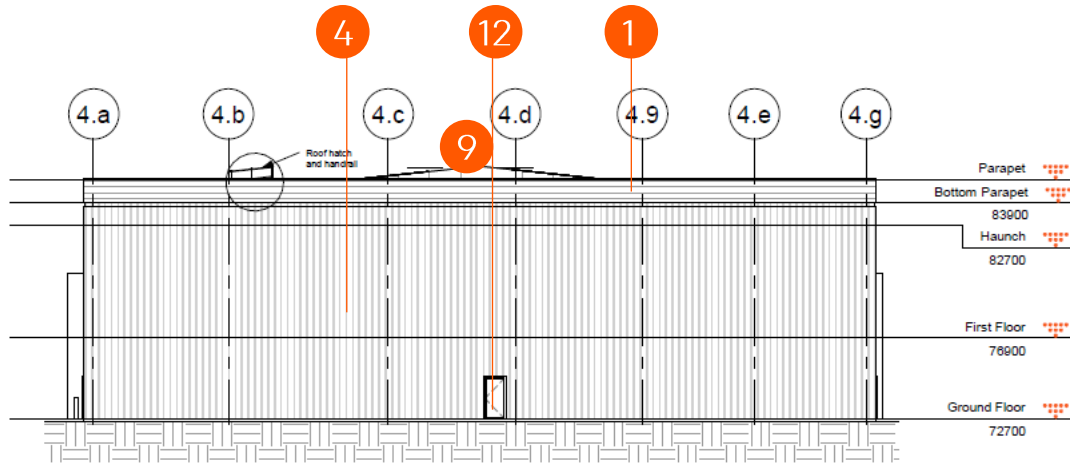
External Facing Materials - Unit 3A & 3B



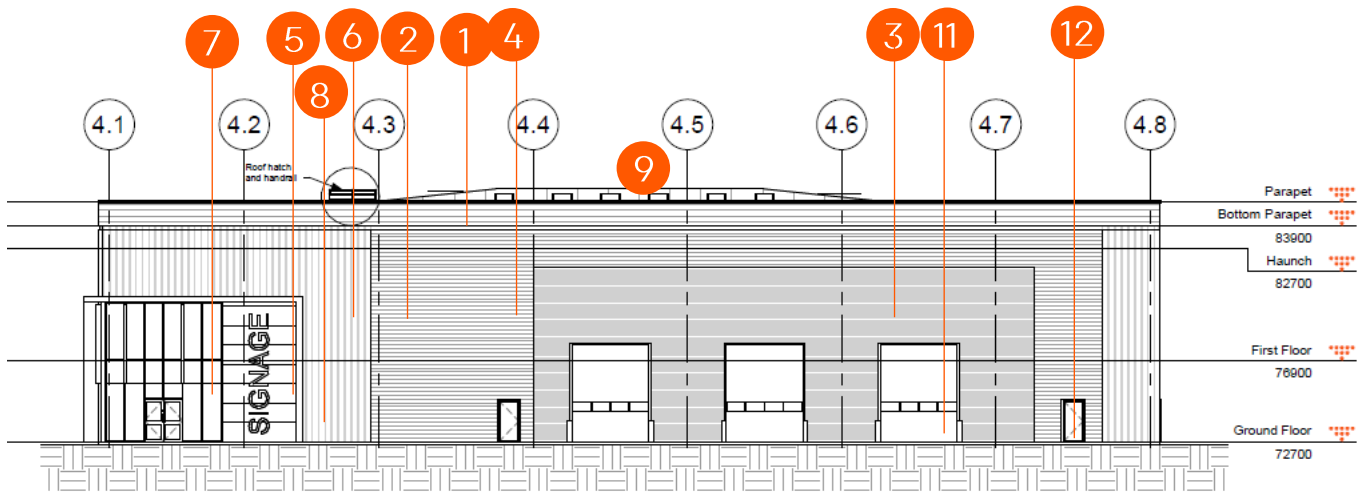
External Facing Materials - Unit 4



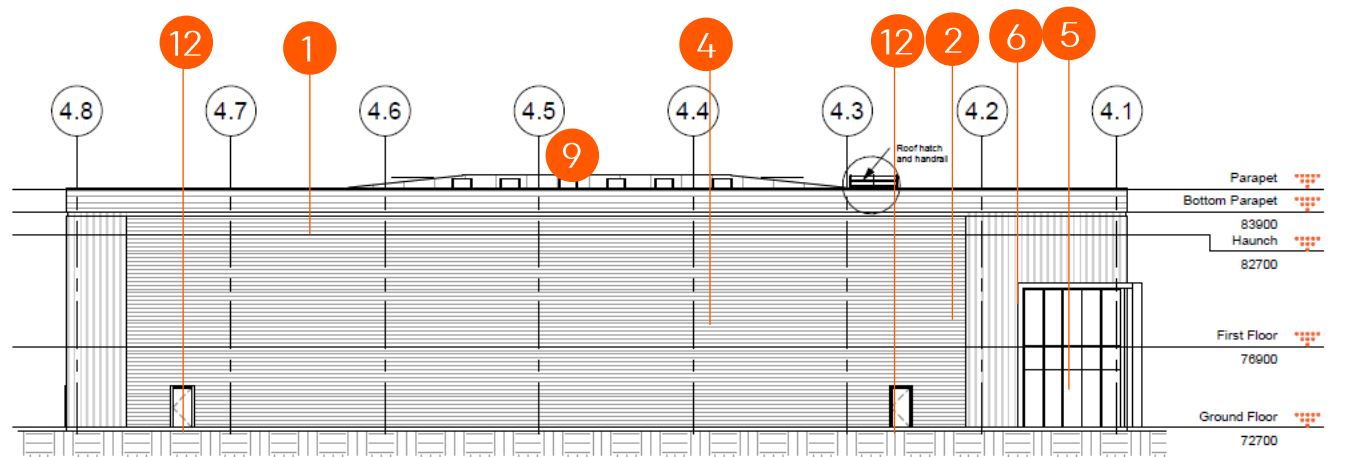
SOUTH ELEVATION



NORTH ELEVATION

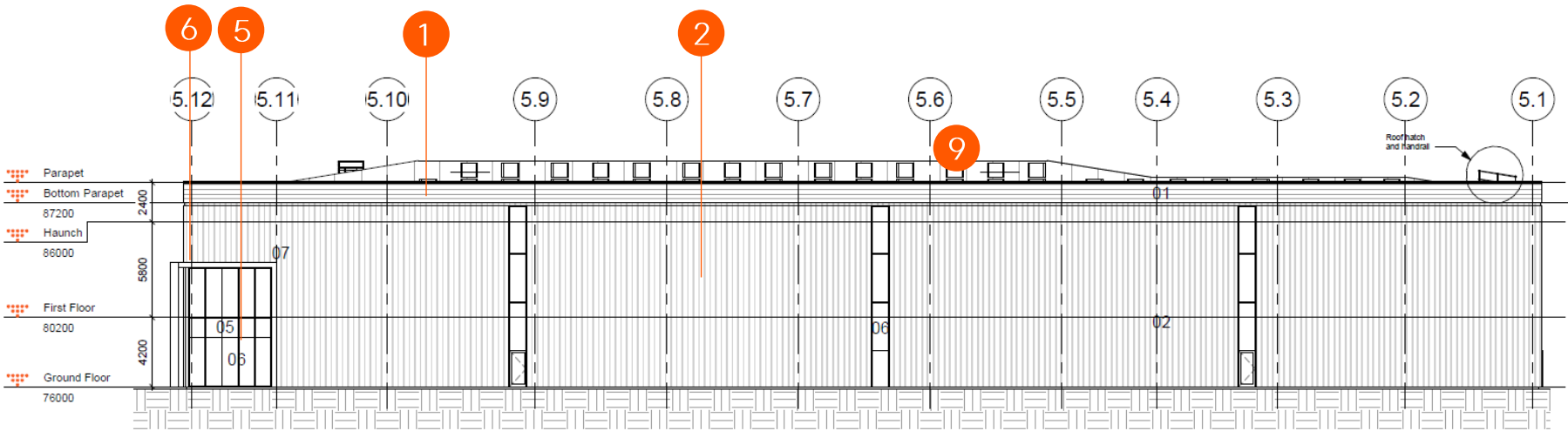


EAST ELEVATION

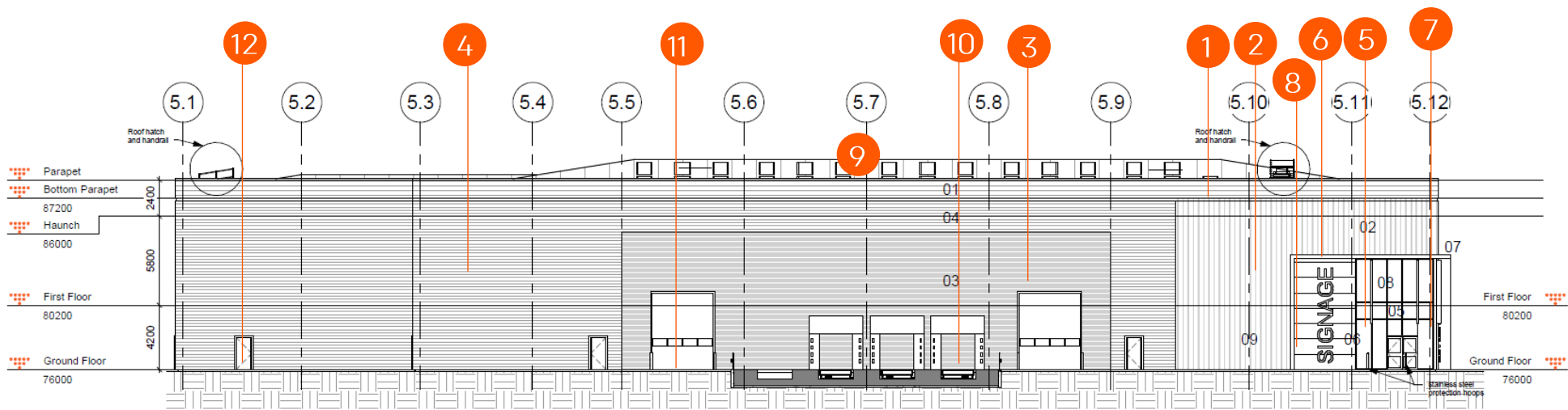


WEST ELEVATION

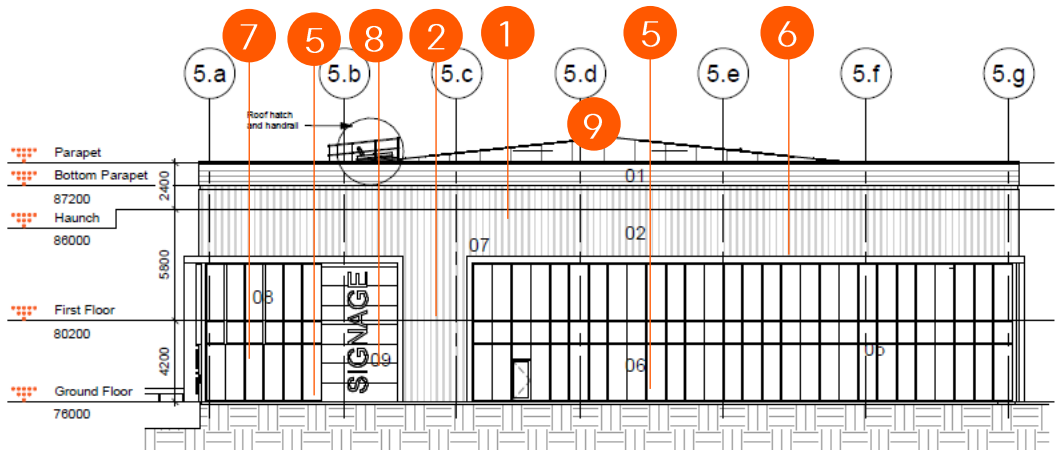
External Facing Materials - Unit 5



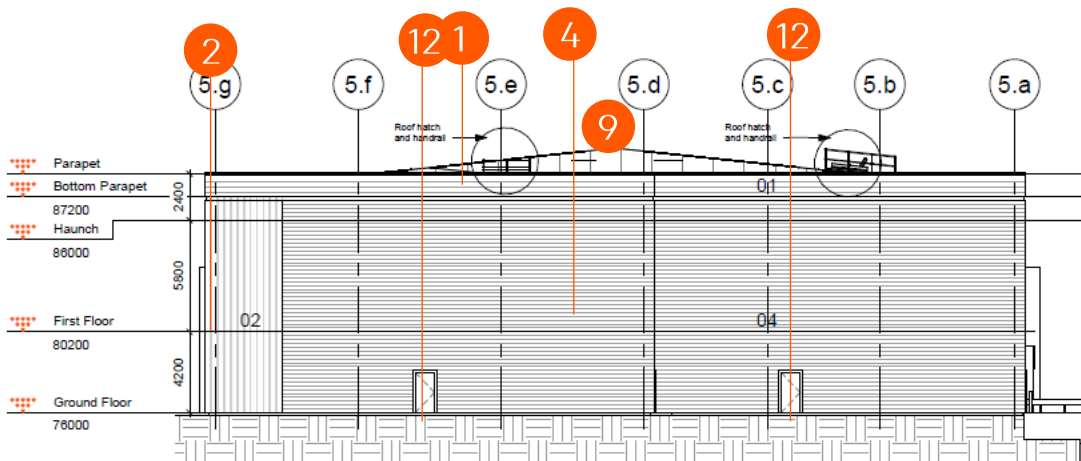
SOUTH ELEVATION



NORTH ELEVATION



WEST ELEVATION



EAST ELEVATION

