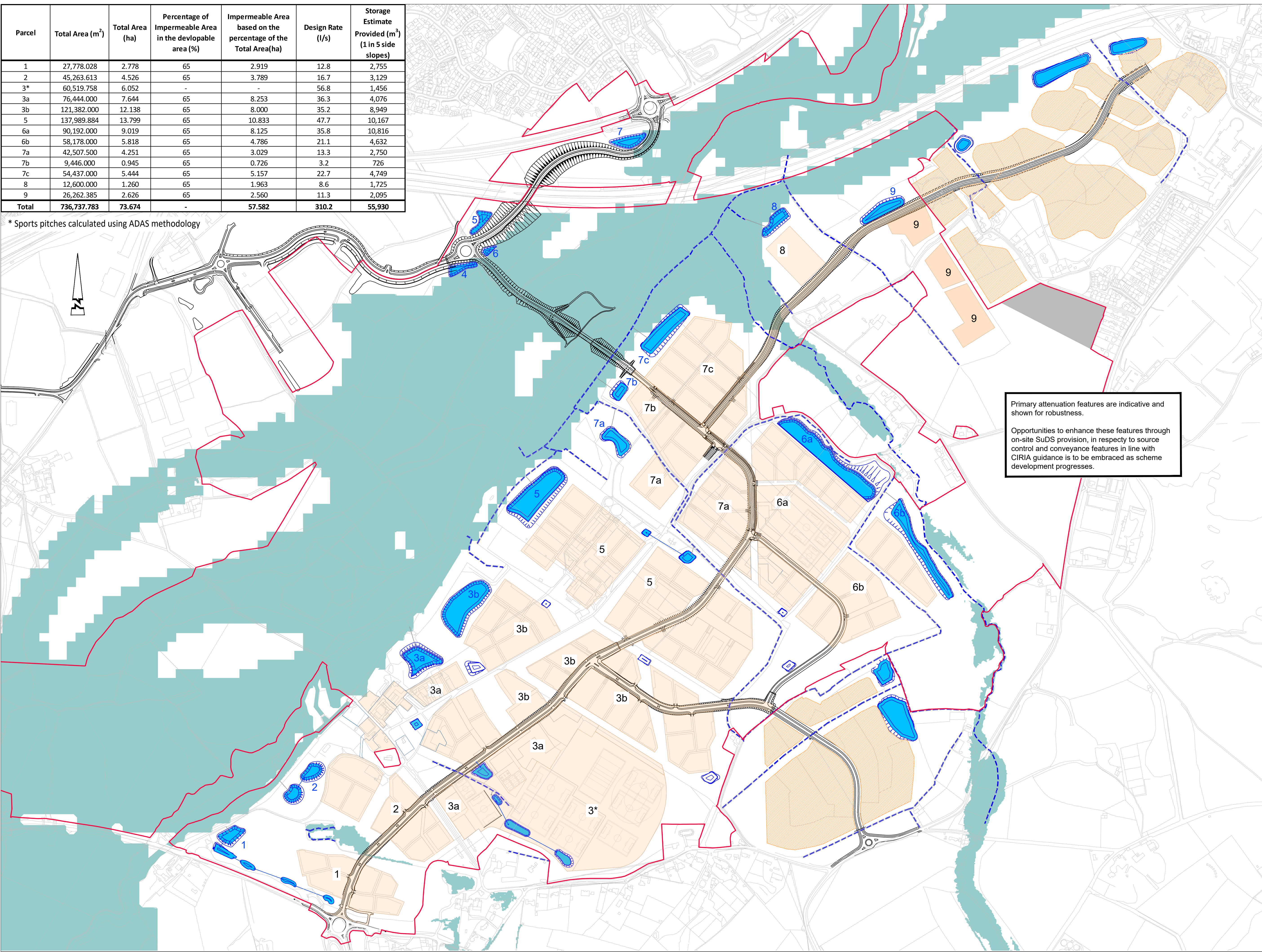


Parcel	Total Area (m ²)	Total Area (ha)	Percentage of Impermeable Area in the developable area (%)	Impermeable Area based on the percentage of the Total Area(ha)	Design Rate (l/s)	Storage Estimate Provided (m ³) (1 in 5 side slopes)
1	27,778.028	2.778	65	2.919	12.8	2,755
2	45,263.613	4.526	65	3.789	16.7	3,129
3*	60,519.758	6.052	-	-	56.8	1,456
3a	76,444.000	7.644	65	8.253	36.3	4,076
3b	121,382.000	12.138	65	8.000	35.2	8,949
5	137,989.884	13.799	65	10.833	47.7	10,167
6a	90,192.000	9.019	65	8.125	35.8	10,816
6b	58,178.000	5.818	65	4.786	21.1	4,632
7a	42,507.500	4.251	65	3.029	13.3	2,750
7b	9,446.000	0.945	65	0.726	3.2	726
7c	54,437.000	5.444	65	5.157	22.7	4,749
8	12,600.000	1.260	65	1.963	8.6	1,725
9	26,262.385	2.626	65	2.560	11.3	2,095
Total	736,737.783	73.674	-	57.582	310.2	55,930

* Sports pitches calculated using ADAS methodology



© ABLEY LETCHFORD PARTNERSHIP LTD.
This drawing should not be reproduced without consent.

GENERAL NOTES:

1. If this drawing has been received electronically it is the recipients responsibility to print the document to the correct scale.
2. All dimensions are in millimetres unless stated otherwise. It is recommended that information is not scaled off this drawing.
3. This drawing should be read in conjunction with all other relevant drawings and specifications.

KEY:

- Existing Pluvial Flood extent
- Proposed Development Parcel
- Proposed Development Parcel (Outside of Redline)
- Proposed Attenuation Basin
- Existing Key Watercourses (Minimised culverting where required to facilitate access)

Primary attenuation features are indicative and shown for robustness.

Opportunities to enhance these features through on-site SuDS provision, in respect to source control and conveyance features in line with CIRIA guidance is to be embraced as scheme development progresses.

P14	09/25	FINAL LAYOUT DESIGN XREF INSERTED	LPA	LPA
P13	07/25	WATERCOURSE NOTE ADDED	CS	LPA
P12	06/25	SELF BUILD PARCELS ADDED	RF	LPA
P11	06/25	UPDATED FOR DRAINAGE STRATEGY REPORT	RF	LPA
P10	03/25	UPDATED TO SUIT LATEST DEVELOPMENT PARCELS	CS	LPA
P9	02/25	PARCEL 6 INFORMATION UPDATED	RF	LPA
P8	02/25	INTERNAL ALIGNMENTS UPDATED TO SUIT SAVILLS MASTERPLAN SFP001 RECEIVED 05/02/25	CS	LPA
P7	01/25	UPDATED TO REFLECT PARCEL 12	GR	LPA
P6	10/24	UPDATED TO REFLECT PARCEL 12	GR	LPA
P5	09/24	UPDATED TO ADDRESS PARCEL 11	GR	LPA
P4	05/24	UPDATED TO REFLECT REDUCED BASIN SIZES	GR	LPA
P3	04/24	UPDATED IN LINE WITH SAVILLS MASTERPLAN	GR	LPA
P2	11/23	UPDATED IN LINE WITH GLEESON MASTERPLAN	KLW	LPA
P1	06/22	FIRST ISSUE	KLW	LPA
Rev	Date	Description	Drawn	Checked

www.ableyletchford.co.uk

Client

UNIVERSITY OF READING

Project

LODDON GARDEN VILLAGE

Title

SURFACE WATER DRAINAGE STRATEGY

Status

Scale	Date	Drawn	Checked
NTS @ A1	JUNE 2025	RF	CS
Drawing No	Revision		
A392-024	P14		