

Reading Brand Book. External Signage.

Advertising Consent.
17/02/25 - First Issue.

Opella.

Opella - Reading
Berkshire
410 Thames Valley Park Dr
Earley
Reading
RG6 1PT



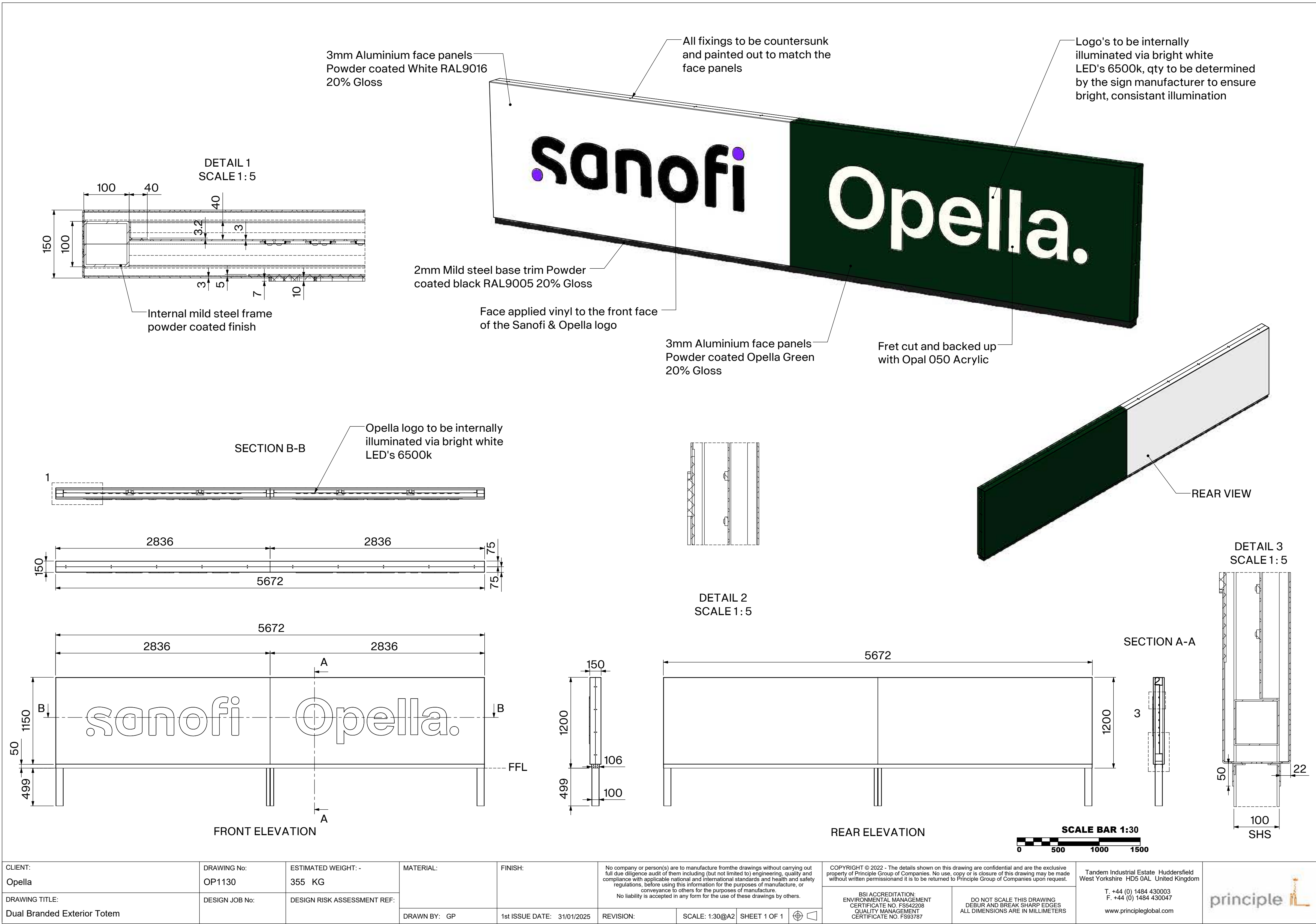
Proposed Exterior Totem



Existing Exterior Totem



Existing Totem cladding will be replace with new aluminium panels. External size will remain the same.
Dimensions: 5672(W) x 150(D) x 1200mm(H)



Existing shared signage totem





Proposed shared signage totem



Shared signage totem - existing totem to remain the same with additional vinyl Opella logo added.
External size will remain the same.



CLIENT: Opella	DRAWING No: OP1130-TL	ESTIMATED WEIGHT: - 0.5KG	MATERIAL:	FINISH:	No company or person(s) are to manufacture from the drawings without carrying out full due diligence audit of them including (but not limited to) engineering, quality and compliance with applicable national and international standards and health and safety regulations, before using this information for the purposes of manufacture, or conveyance to others for the purposes of manufacture. No liability is accepted in any form for the use of these drawings by others.			COPYRIGHT © 2025 - The details shown on this drawing are confidential and are the exclusive property of Principle Group of Companies. No use, copy or is closure of this drawing may be made without written permission and it is to be returned to Principle Group of Companies upon request.		Tandem Industrial Estate Huddersfield West Yorkshire HD5 0AL United Kingdom T. +44 (0) 1484 430003 F. +44 (0) 1484 430047 www.principleglobal.com	
	DRAWING TITLE: Totem Logo	DESIGN RISK ASSESSMENT REF:									
	DESIGN JOB No: OP1130		DRAWN BY: GP	1st ISSUE DATE: 31/01/2025	REVISION:	SCALE: 1:2@A2	SHEET 1 OF 1		BSI ACCREDITATION: ENVIRONMENTAL MANAGEMENT CERTIFICATE NO. FS542208 QUALITY MANAGEMENT CERTIFICATE NO. FS93787	DO NOT SCALE THIS DRAWING DEBUR AND BREAK SHARP EDGES ALL DIMENSIONS ARE IN MILLIMETERS	

Existing Dual branded façade

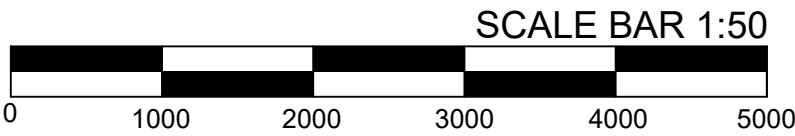
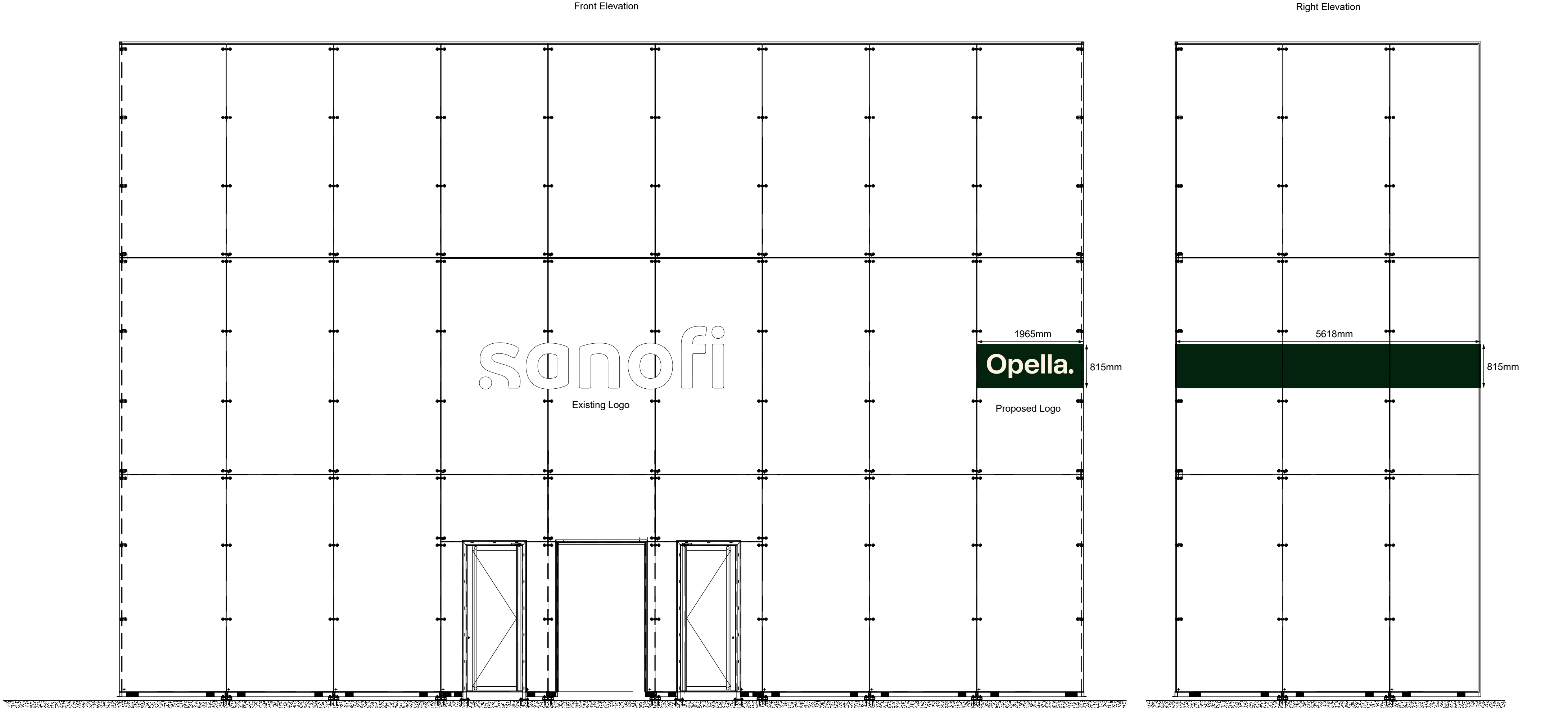


Proposed Dual branded façade



Dual branded façade - Opella logo to be added with green band returning round the right side.

- Logo is Opella Warm White. Dimensions 1965mm (W) x 815mm (H)
- Green vinyl band applied to Opella section and returning to the right side. Dimensions 5618mm (W) x 815mm (H)



CLIENT: Opella	DRAWING No: OP1130-GL	ESTIMATED WEIGHT: - 1 KG	MATERIAL:	FINISH:	No company or person(s) are to manufacture from the drawings without carrying out full due diligence audit of them including (but not limited to) engineering, quality and compliance with applicable national and international standards and health and safety regulations, before using this information for the purposes of manufacture, or conveyance to others for the purposes of manufacture. No liability is accepted in any form for the use of these drawings by others.		COPYRIGHT © 2025 - The details shown on this drawing are confidential and are the exclusive property of Principle Group of Companies. No use, copy or is closure of this drawing may be made without written permission and it is to be returned to Principle Group of Companies upon request.		Tandem Industrial Estate Huddersfield West Yorkshire HD5 0AL United Kingdom T. +44 (0) 1484 430003 F. +44 (0) 1484 430047 www.principleglobal.com	
	DRAWING TITLE: Glazing Logo	DESIGN RISK ASSESSMENT REF:	DRAWN BY: GP	1st ISSUE DATE: 31/01/2025	REVISION:	SCALE: 1:50@A2	SHEET 1 OF 1			

For all enquiries please contact:



Alastair Day

Technical Manager
Alastair.day@principleglobal.com

Gareth Pritchard

Senior Product Development Designer
Gareth.Pritchard@principleglobal.com