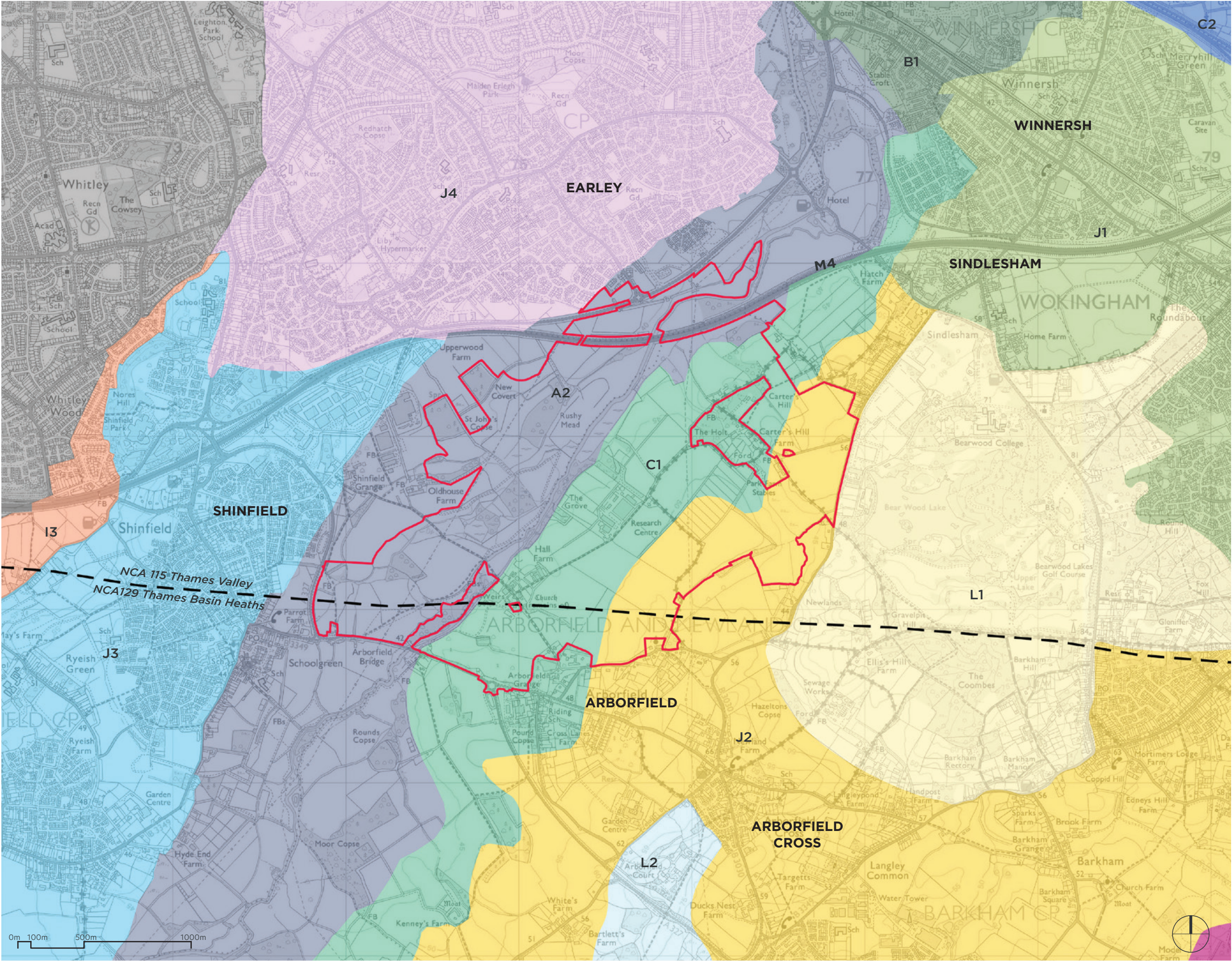


- Application Red Line Boundary
- Heritage Designations**
- Listed Building
- Conservation Area
- Landscape Designations**
- Local Nature Reserve
- Major Landscape Feature - Policy EN13
- Registered Park and Garden - Bearwood College
- Sites of Importance for Nature Conservation (SINCs)
- Wokingham Borough Council draft 'Valued Landscape' (emerging policy NE6)

LODDON GARDEN VILLAGE
on behalf of
University of Reading

LA150
Figure 14.1: Landscape Designations

Drawn by	Checked by	Scale
JM / MS	RB	1:20,000 @ A3
Drawn on	Revision	Job
12.06.2025	A (24.06.25)	498048



Application Red Line Boundary

National Character Areas

National Character Area Boundary

Urban Area - Reading

**Wokingham Borough Council
Landscape Character Assessment**

The River Landscapes

Type A: River Valley

A2 - Loddon River Valley

Type B: River Valley with Open Water

B1 - Loddon River Valley with Open Water

Type C: River Terrace

C1 - Arborfield River Terrace

C2 - Hurst River Terrace

The Clay Landscapes

Type I: Farmed Clay Lowlands

I3 - Grazeley Farmed Clay Lowland

Type J: Settled and Farmed Clay

J1 - Wokingham-Winnersh Settled and Farmed Clay

J2 - Arborfield and Barkham Settled and Farmed Clay

J3 - Spencers Wood Settled and Farmed Clay

J4 - Woodley-Earley Settled and Farmed Clay

The Sand Landscapes

Type L: Wooded Sand and Gravel Hills

L1 - Bearwood Wooded Sand and Gravel Hills

L2 - Farley Hill Wooded Sand and Gravel Hills

LODDON GARDEN VILLAGE

on behalf of
University of Reading

LA151
Figure 14.2: Landscape Character

Drawn by
JM / MS

Checked by
RB

Scale
1:20,000 @ A3

Drawn on
12.06.2025

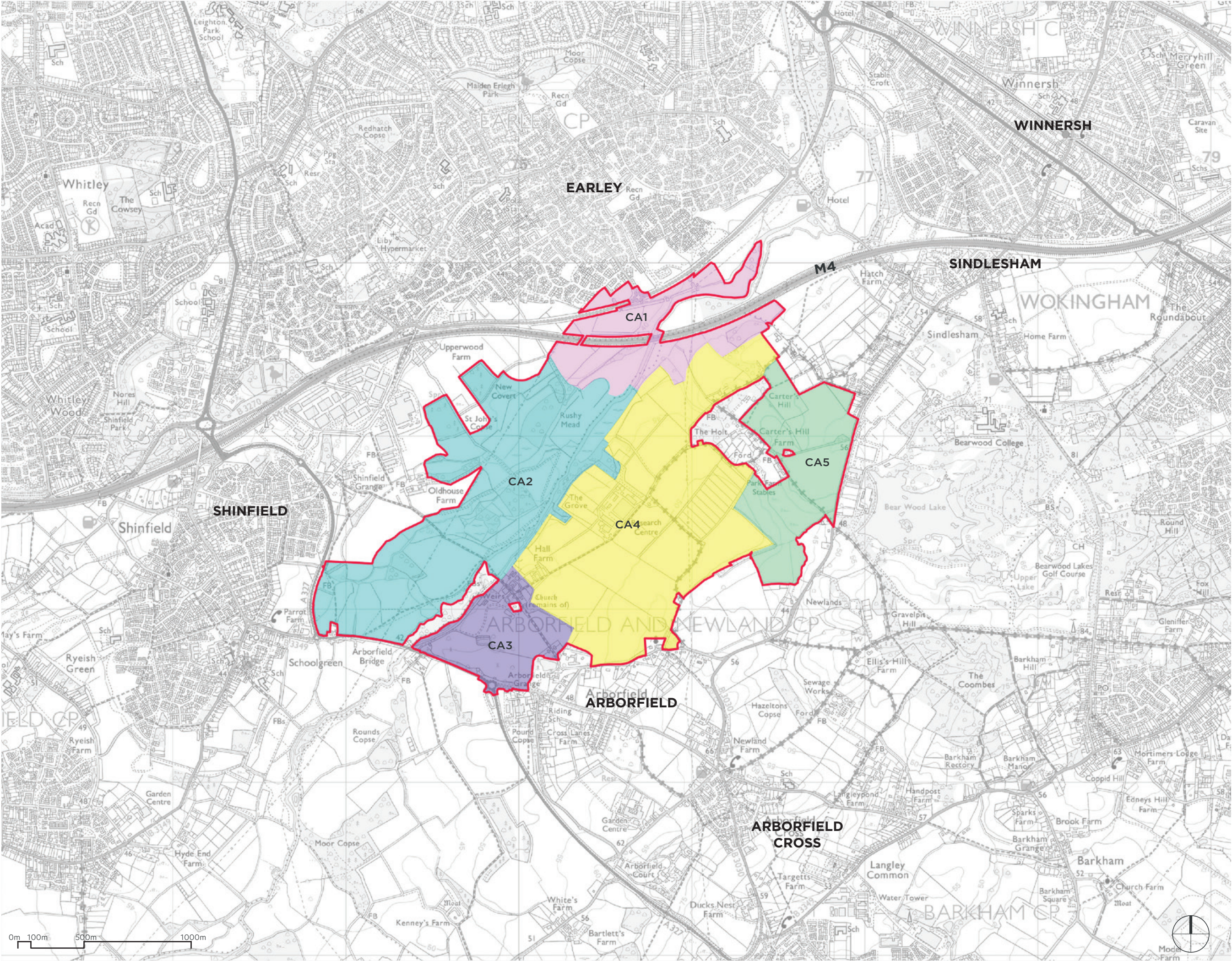
Revision
B (24.06.25)

Job
498048

savills

URBAN
DESIGN
STUDIO

Reproduced from the Ordnance Survey Map with the permission of the Controller of H.M. Stationery Office © Crown Copyright and database rights 2025. OS AC0000813445 Savills (UK) Ltd. © Copyright Savills (UK) Ltd.



- Application Red Line Boundary**
- Site Character Areas**
- CA1 River Loddon: M4 Corridor
 - CA2 River Loddon: Loddon West
 - CA3 Arborfield River Terrace: Arborfield Hall Parkland
 - CA4 Arborfield River Terrace: Loddon East
 - CA5 Arborfield and Barkham Settled and Framed Clay: Mole Road Corridor

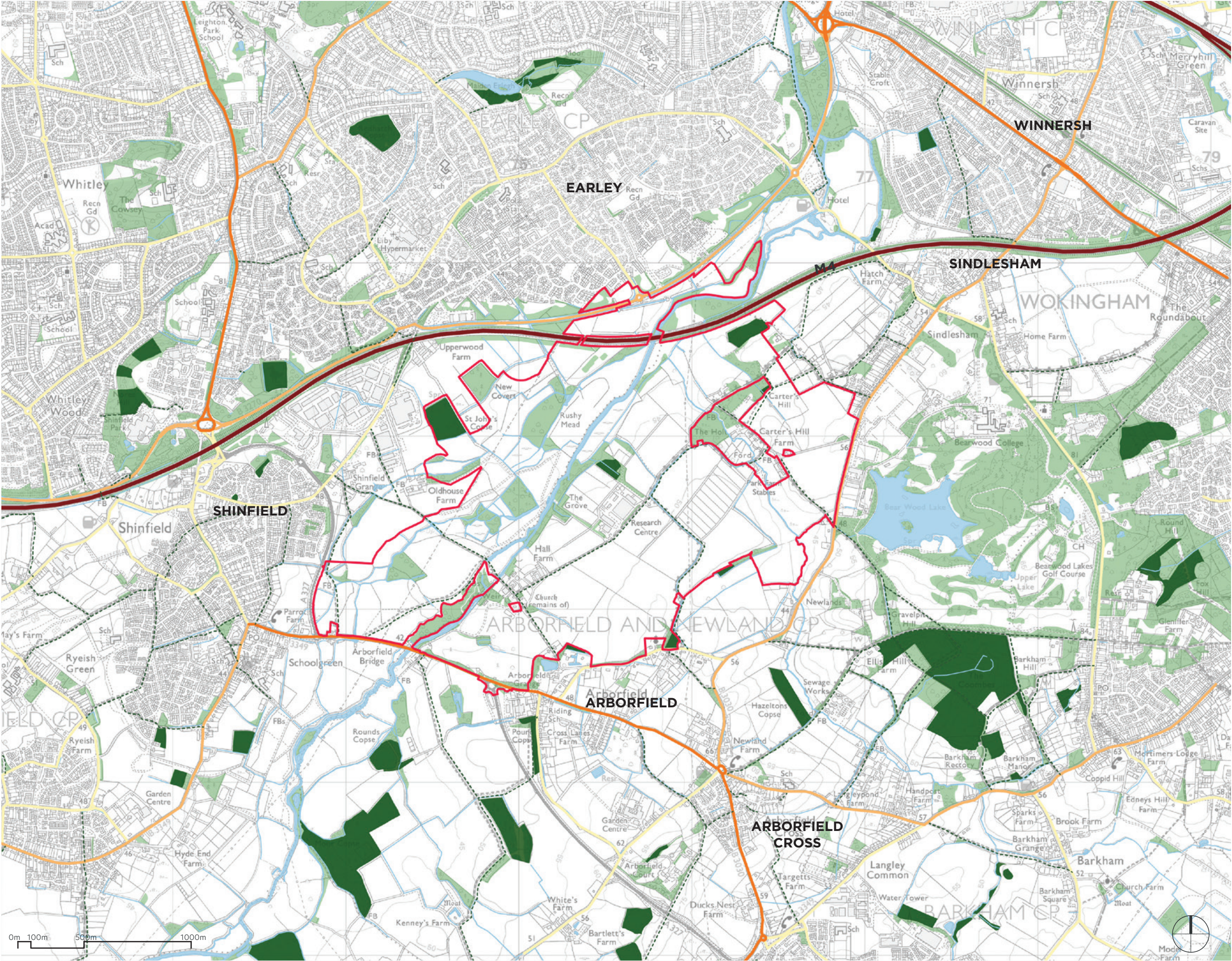
LODDON GARDEN VILLAGE

on behalf of
University of Reading

LA152 Figure 14.3: Site Landscape Character

Drawn by JM / MS Checked by RB Scale 1:20,000 @ A3

Drawn on 12.06.2025 Revision A (24.06.25) Job 498048



- Application Red Line Boundary
- Site Character Areas**
- Water Body
 - Woodland
 - Ancient Woodland
- Movement & Access Context**
- Public Right of Way
 - Motorway
 - A Road
 - B Road
 - Primary Road
 - Minor Road

LODDON GARDEN VILLAGE

on behalf of
University of Reading

LA153
Figure 14.4: Landscape and Movement Context

Drawn by JM / MS Checked by RB Scale 1:20,000 @ A3

Drawn on 12.06.2025 Revision A (24.06.25) Job 498048



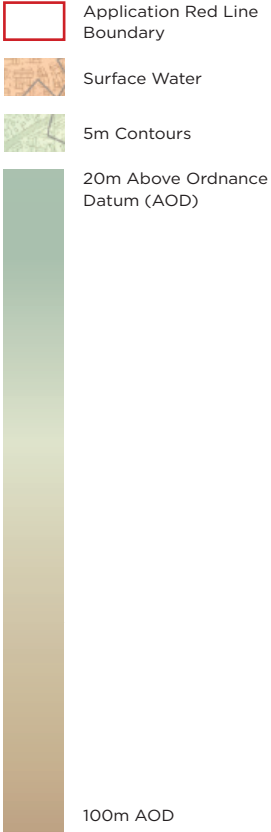
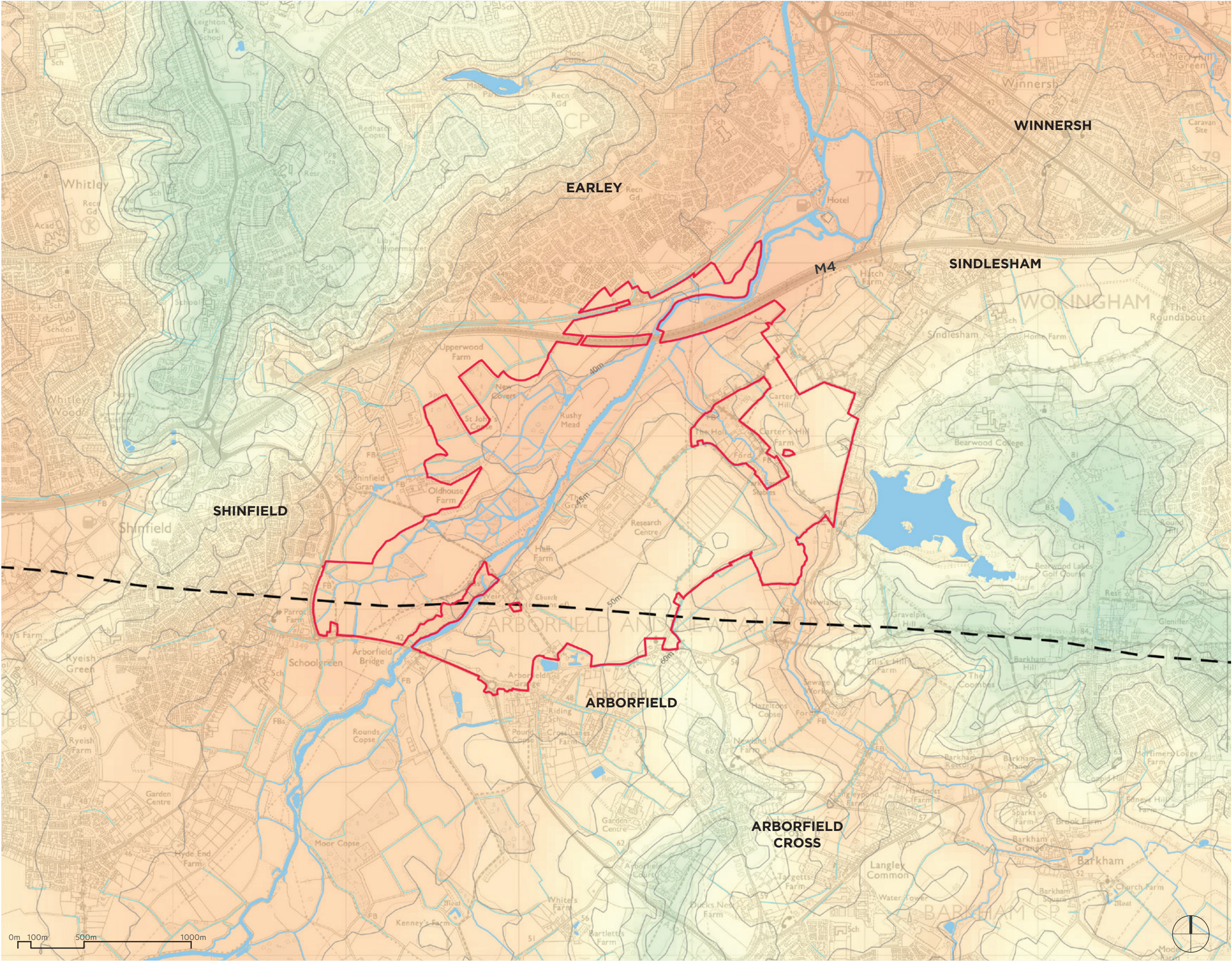
- Site Boundary
- Water courses
- Ancient Woodlands
- Woodlands (Non-ancient)
- Listed Buildings
- Public Rights of Way
- Permissive footpaths [Under construction]
- Proposed riverside footpaths [Policy C4]
- Proposed riverside footpaths [Policy C4]
- Bearwood College registered park and gardens
- Local Wildlife Sites
- Trees covered by Tree Preservation Orders (Within /adjacent to the site only)

LODDON GARDEN VILLAGE

on behalf of
University of Reading

LA154
Figure 14.5: Site Landscape Features

Drawn by JM / MS	Checked by RB	Scale NTS
Drawn on 12.06.2025	Revision C(10.07.25)	Job 498048



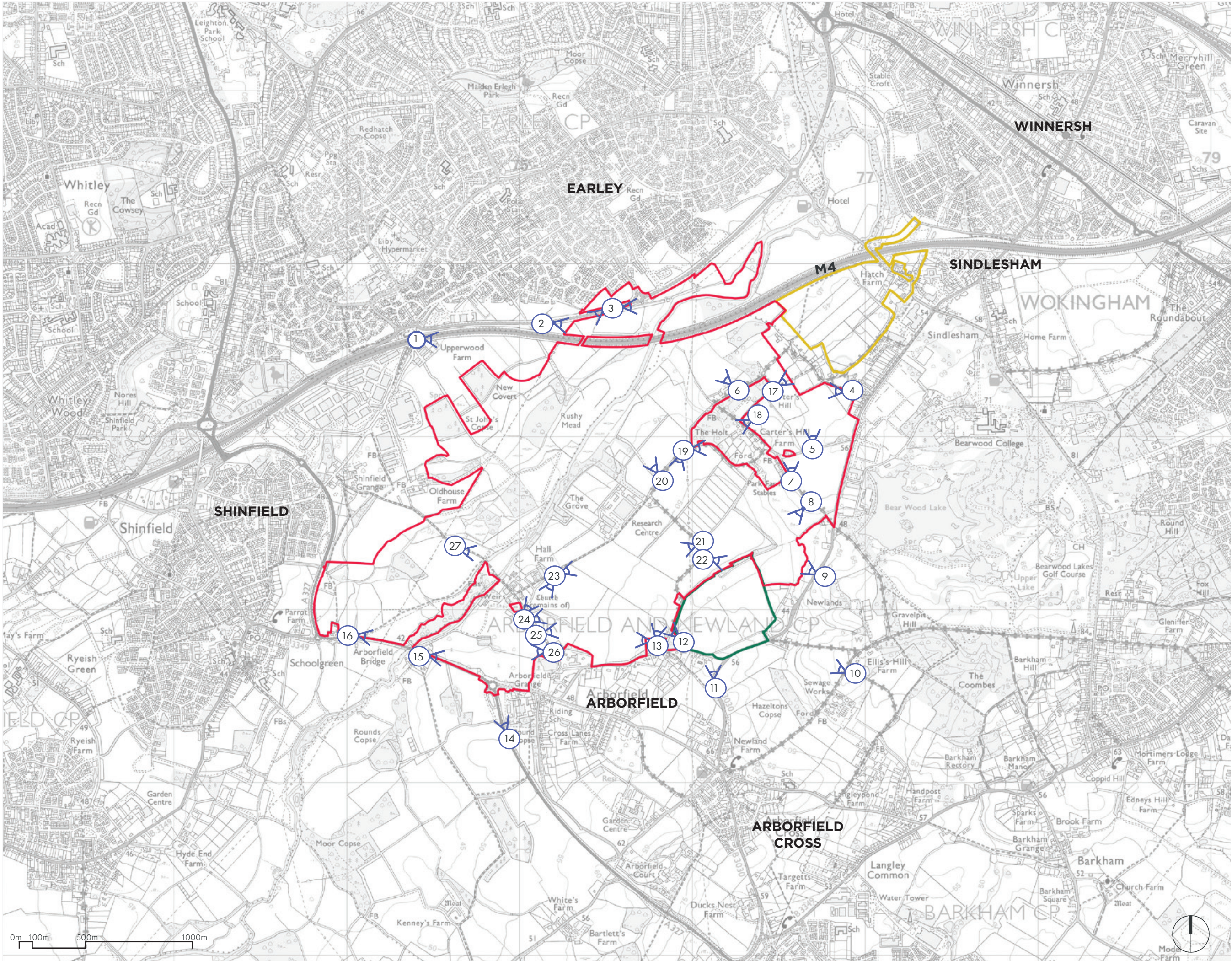
LODDON GARDEN VILLAGE





on behalf of
University of Reading

LA155
Figure 14.6: Landform and Water Features

Drawn by JM / MS Checked by RB Scale 1:20,000 @A3

Drawn on 12.06.2025 Revision A (24.06.25) Job 498048



-  UoR Outline Planning Application (OPA) Boundary
-  Gleeson Land Ltd Planning Application Boundary
-  HFLl Planning Application Boundary
-  Viewpoints

LODDON GARDEN VILLAGE

on behalf of
University of Reading

LA156
Figure 14.7: Photography Viewpoints

Drawn by **JM / MS** Checked by **RB** Scale **1:20,000 @ A3**

Drawn on **12.06.2025** Revision **C (18.09.25)** Job **498048**



View 1: From footbridge over M4 motorway looking to south-east. Mature trees screen views towards the proposed Thames Valley Science Park and Loddon Garden Village beyond. The new motorway bridge would be around the bend in the M4, but just visible in the distance. The low sensitivity of this view and visual receptors, with the context of the existing motorway infrastructure mean that the change to the view would not be significant.



View 2: From Lower Earley Way, looking east towards new bridge crossing. The bend in the road and existing vegetation screen the roundabout leading to Meldreth Way however the removal of some vegetation adjacent to the new road may mean that it is partially visible in the distance. Given the low sensitivity of receptors here, this would not result in a significant effect on visual amenity.

LODDON GARDEN VILLAGE

on behalf of
University of Reading

NOTE: Panoramas stitched from photographs taken with a DSLR full frame camera fitted with a 50mm lens

Figure 14.8: Views			
LA157			
Drawn by	Checked by	Scale	
JM	RB	NTS	
Drawn on	Revision	Job	
12.06.2025	-	498048	

