




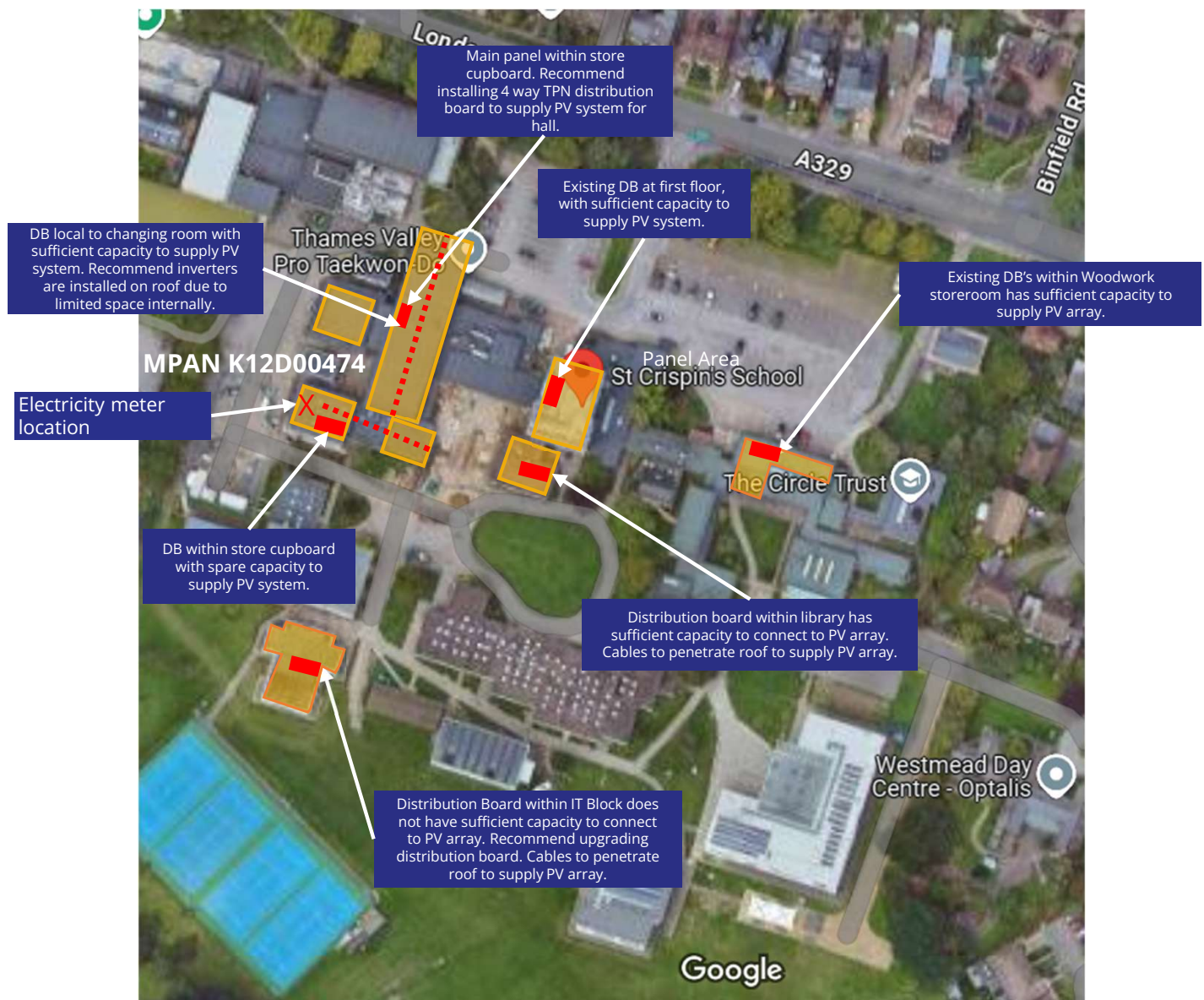
6. Electrical Infrastructure Assessment



Barker have assessed the electrical infrastructure at St Crispins Secondary School to establish the proposed solar PV cable distribution routes.

The diagram below illustrates the locations of the school's electrical equipment and the Proposed Cable Routes.

-  Proposed Cable Route
-  Distribution Board
-  = Meter Location



Due to the described metering arrangements, PV has been sized to meet the individual areas' electricity consumptions and avoid excessive exporting back to the grid.

6a. Electrical Infrastructure Assessment



Barker have assessed the electrical infrastructure at St Crispins Secondary School to establish the proposed solar PV cable distribution routes.

Due to the scheduled remodeling works within the Sports Hub, it currently can not be determined at this stage whether there is sufficient space within the block to locate the PV inverters and associated equipment. The spare capacity on the distribution boards also can not be determined at this stage.

