

1 Wall - Kingspan KS1000MR metallic silver cladding RAL 9006



2 Wall - Kingspan KS1000MR anthracite grey cladding RAL 7016



3 Shopfront / entrance / window frames - polyester powder coated aluminium, colour - dark grey ral 7016 (anthracite)



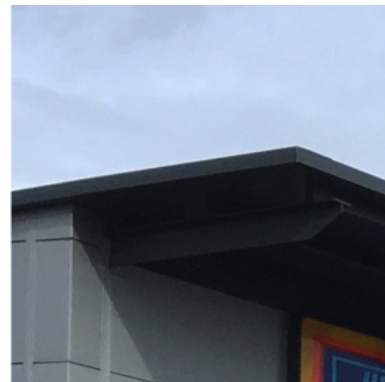
4 Blockleys brick Ltd. 'smooth black' with tarmac y14 (black) to building plinth



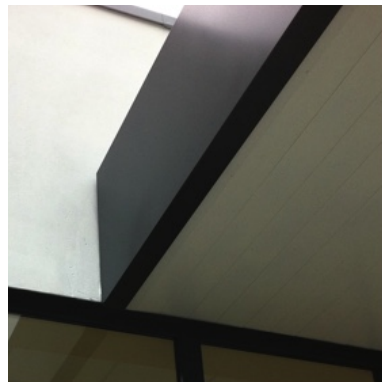
5 Example image of removable protection bars over opening under slab void - Rectangular opening with galvanised steel finish



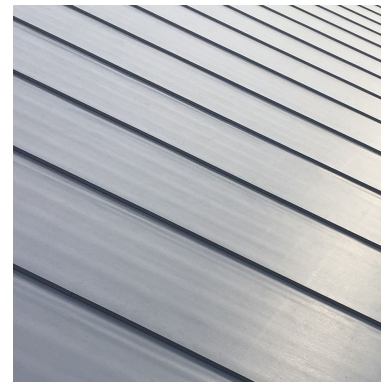
6 External escape doors and frames, steel polyester powder coated finish, colour - dark grey ral 7016 (anthracite)



7 Eaves, soffits, rainwater goods, and exposed steelwork. colour - dark grey ral 7016 (anthracite)



8 Fascias - polyester powder coated aluminium to BS6496, colour - dark grey ral 7016 (anthracite)



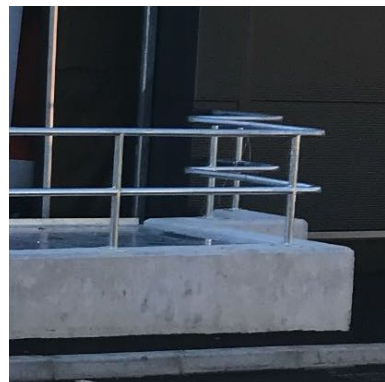
9 Kingspan Ks1000Td (Topdek) 100mm (Core) Thickness Composite Roof Panels On Purlins - Colour To Be Anthracite Grey Ral 7016.



10 Sectional overhead loading bay door - pvf coated steel, ral 7016 (anthracite). Curtain Dock Shelter, colour black



11 Metal external stairs by metalwork contractor



12 Handrails - satin finish stainless steel

FOR LOCATION OF MATERIALS SHOWN ABOVE PLEASE REFER TO PROPOSED ELEVATIONS 201057-1400 AND ROOF PLAN 201057-1302



Kendall Kingscott
Glentworth Court, Lime Kiln Close,
Stoke Gifford, Bristol, BS34 8SR
+44 (0)117 931 2062
www.kendallkingscott.co.uk

Do not scale this drawing

Project
Aldi Winnersh, Gazelle Close

Client
Aldi Stores Ltd

Date	Drawn	Purpose/Status
18/12/2025	PE	
Scale	Checked	Paper Size
NTS	MW	ISO A3
Filename	201057 - Materials v2024.vwx	

PO1	22/12/25	PE	MW	Drawing issue
Rev	Date	By	Ap	Note

Drawing Title
Building Facade Materials

Project Number/Drawing Number

201057-1900

Check all dimensions and levels on site

Revision

P01

© Copyright

Only to be used on the site for which designed. The electronic transmission of designs/information contained in this drawing is carried out entirely at the User's risk and Kendall Kingscott Ltd. will have no liability for any errors or inaccuracies arising therefrom. The production of amended or updated information from the said designs/information by the User is entirely the responsibility of the User and Kendall Kingscott Ltd. shall have no responsibility in respect thereof whatsoever.