

**KEY**  
Specification references to be read in conjunction with Landscape Specification P1040-HLM-XX-XX-SP-L-0060.

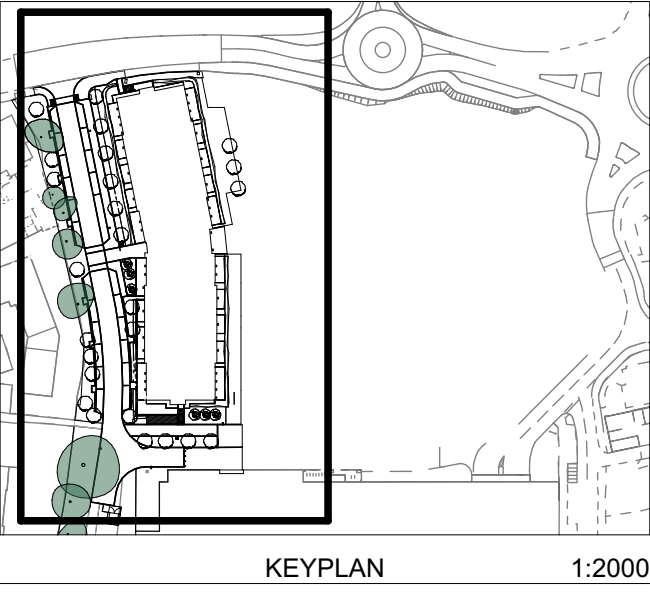
- Red line boundary**
- Proposed Finished Floor Levels**
- P1 - Proposed linear paving**  
Marshalls Myriad - to match Phase 1 paving products  
Size: 400 x 200 x 80mm  
Pattern: Stretcher bond  
Colour: 'Morning Light', Light Grey - Textured  
Spec ref: Q25 / 315
- P2 - Proposed block paving**  
Size: 300 x 150 x 100mm  
Pattern: Stretcher bond  
Colour: 'Graphite - Textured'  
Spec ref: Q25 / 315A
- P4 - Proposed flag paving**  
Tobemore Maylar Flags  
Size: 450 x 450 x 50mm  
Pattern: Stretcher bond  
Colour: 'Silver - Textured'  
Spec ref: Q25 / 315 B
- P5 - Proposed block paving**  
Tobemore Fusion - or similar approved  
Size: 300 x 200 x 80mm  
Pattern: Herringbone bond  
Colour: 'Graphite - Textured'  
Spec ref: Q25 / 315C
- P6 - Permeable macadam**  
Vehicle grade.  
To engineers specification
- P10 - Paving retained from Phase 1**  
To be made good where necessary
- P11 - Macadam**  
Vehicle grade.  
To engineers specification
- P12 - Proposed flag paving**  
Marshalls Perfecta Traffic or similar approved  
400 x 400 x 65mm, stretcher bond  
Buff, smooth ground  
Spec ref: Q25 / 315E
- P13 - Gravel margin**  
Cotswold Pebbles with sizes 20-30mm, or similar approved  
75mm depth  
Spec ref: Q23 / 160
- P14 - Concrete slab to cycle store**  
To engineer's details & specification
- RG - Gravel mulch to rain garden**  
Allgreen's Cotswold Pebbles 10mm - or similar approved  
75mm depth.  
Spec ref: Q23 / 160A
- TP1 - Tactile paving to steps**  
Marshalls Hazard warning paving - or similar approved  
400 x 400 x 50mm  
Spec ref: Q25 / 320
- TP2 - Tactile paving to crossing**  
Marshalls Blister paving - or similar approved  
400 x 400 x 50mm  
Spec ref: Q25 / 320A
- E1 - Demarcation units to parking bays**  
Marshalls Modal Priora - or similar approved  
200 x 100 x 80mm, single stretcher course  
Colour: 'Light Granite' - Textured  
Spec ref: Q10 / 415
- E2 - Uprand Kerb**  
Tobemore Fusion Kerb - or similar approved  
145 x 255 x 915 mm  
Spec ref: Q10 / 110C
- E3 - Flush Kerb**  
Tobemore Fusion Dropper - or similar approved  
145 x 255 x 915 mm  
Spec ref: Q10 / 110A
- E6 - Pin Kerb**  
Tobemore Fusion Edge - or similar approved  
75 x 150 x 900mm  
Spec ref: Q10 / 110D
- E7 - Timber retaining edge**  
Treated timber board 250x50x3600mm, fixed to timber stakes 50x50x400mm at 1.2m centres.  
Spec ref: Q10 / 110E
- CS - Cycle Store**  
The Bike Storage Company Amazon Eco Shelter  
or similar approved  
8150 x 2100 x 2100 mm  
Spec ref: Q91 / 340

- G1 - Pedestrian gate**  
1.1m high to match guardrail with firemans key lock  
Spec ref: Q41 / 110
- ST - Flight of steps**  
Marshalls Conservation Step Unit or similar approved  
Refer to details and sections on drawing  
P1040-HLM-00-00-DR-L-3093  
Spec ref: Q25 / 316
- HR - Handrail to steps**  
900mm above pitch of steps  
Stainless steel. Refer to details on drawing:  
P1040-HLM-00-00-DR-L-3095  
Spec ref: Q41 / 240
- GR - Guardrail**  
1.1m high. Refer to details on drawing:  
P1040-HLM-00-00-DR-L-3095  
Spec ref: Q41 / 110
- BL2 - Automatic Bollard**  
To be controlled by Leisure Centre. Stainless steel.  
Installed by others, not within Mid-Group's scope of work.
- EVCP - EV Charge Point Universal Base Plate**  
Base plate only, charging units to be retrofitted by others.  
Refer to M&E drawing P1040-EDP-XX-00-DR-E-8001 / 8002 & P1040-DGL-XX-XX-TS-X-0046 for details.
- Existing tree to be retained**  
with associated Root Protection Area
- Proposed tree**  
Refer to Soft Landscape Plan & Details
- Root protection barrier**  
e.g. Green Blue Urban's RootPro 600 / 1000 / 2000mm or similar approved. Spec ref: Q31 / 510.  
To extend 300mm below depth of services or hard landscape it is installed to protect. And to extend a minimum 2000mm beyond the expected canopy of the nature tree.  
To be installed with ribs facing the tree.  
Note, the locations are indicative only and are subject to further co-ordination with Drainage and M&E service routes. Root protection barriers also shown on Soft Landscape Layout.
- Precautionary Dig Zone A**  
Within RPA of T4. Works within precautionary dig zone to be carried out in line with Arboricultural Method Statement to BS5837. Refer to Tree Protection Plan (P1040-SDC-XX-XX-PL-X-0001) and Arboricultural Method Statement (AMS 05730). Refer to Civil Engineers drawing P1040-ARP-XX-XX-DR-C-0306 for details.
- Precautionary Dig Zone B**  
Within RPA of T13, T9, T8 & T7A. Works within precautionary dig zone to be carried out in line with Arboricultural Method Statement to BS5837. Refer to Tree Protection Plan (P1040-SDC-XX-XX-PL-X-0001) and Arboricultural Method Statement (AMS 05730). Refer to Civil Engineers drawing P1040-ARP-XX-XX-DR-C-0306 for details.
- Proposed Manhole / Inspection Chamber**  
Refer to Engineer's drainage layout & manhole schedules. All manhole covers in hard landscape to be recessed with infill paving to match surrounding paving pattern.
- Vent Grating - Below Ground Ventilation**  
Enterprise Rectangular Gully Vent, Stainless Steel  
420 x 210mm lid.  
Spec ref: Q50 / 262
- Channel Drain**  
Hauraton Recifyx Pro 100 or equal approved.  
Refer to engineer's drawings.
- Feeder Pillar**  
Refer to M&E drawing P1040-EDP-XX-00-DR-E-8001 / 8002
- Wayfinding finger post**  
To be designed and installed by others, in line with Wokingham Borough Council wayfinding proposals.
- W4 - Brick Wall**  
To edge of steps. Refer to typical details on drawing P1040-HLM-00-00-DR-L-3095
- W5 - Brick Wall**  
Refer to typical details on drawing P1040-HLM-00-00-DR-L-3095
- W6 - Concrete Retaining Wall with Guardrail**  
Refer to typical details on drawing P1040-HLM-00-00-DR-L-3095
- W7 - Concrete Wall To Cycle Store**  
Refer to typical details on drawing P1040-HLM-00-00-DR-L-3095

- Note:
- MEP coordination is outstanding at date of issue, full MEP coordination to be completed following issue of updated external services drawing.
  - Provision for an external CAT 5 tap to be co-ordinated with the MEP Engineer.
  - Position and detail of EVCPs to be finalised following further site investigation to avoid impact on existing tree root protection areas.

**Notes**

Check all dimensions on site. Do not scale from this drawing  
Report any discrepancies and omissions to HLM Architects  
This Drawing is Copyright ©



NOTE:  
This drawing forms part of the Hard Landscape Package of Works and should be read in conjunction with the full package, which consists of the following drawings & documents:

- P1040-HLM-00-00-DR-L-0001 RESIDENTIAL LANDSCAPE MASTERPLAN
- P1040-HLM-00-00-DR-L-0002 RESIDENTIAL SITE LEVELS PLAN SHEET 1
- P1040-HLM-00-00-DR-L-0003 RESIDENTIAL SITE LEVELS PLAN SHEET 2
- P1040-HLM-00-00-DR-L-3080 RESIDENTIAL HARD LANDSCAPE LAYOUT PARK SHEET 1
- P1040-HLM-00-00-DR-L-3090 RESIDENTIAL HARD LANDSCAPE DETAILS - CAR PARK SHEET 1
- P1040-HLM-00-00-DR-L-3091 RESIDENTIAL HARD LANDSCAPE DETAILS - CAR PARK SHEET 2
- P1040-HLM-00-00-DR-L-3092 RESIDENTIAL HARD LANDSCAPE DETAILS - RAIN GARDENS
- P1040-HLM-00-00-DR-L-3093 RESIDENTIAL HARD LANDSCAPE DETAILS - STEPS
- P1040-HLM-00-00-DR-L-3094 RESIDENTIAL HARD LANDSCAPE DETAILS - TYPICAL DETAILS SHEET 1
- P1040-HLM-00-00-DR-L-3095 RESIDENTIAL HARD LANDSCAPE DETAILS - TYPICAL DETAILS SHEET 2
- P1040-HLM-XX-XX-DR-L-3096 RESIDENTIAL HARD LANDSCAPE DETAILS - EXISTING TREES SHEET 1
- P1040-HLM-XX-XX-DR-L-3097 RESIDENTIAL HARD LANDSCAPE DETAILS - EXISTING TREES SHEET 2
- P1040-HLM-00-00-DR-L-4501 RESIDENTIAL SOFT LANDSCAPE PLANTING LAYOUT
- P1040-HLM-00-00-DR-L-4503 RESIDENTIAL SOFT LANDSCAPE TYPICAL DETAILS
- P1040-HLM-XX-XX-SPL-0080 LANDSCAPE SPECIFICATION

All manhole covers to be recessed and finished with associated paving surface.

C08	Issued for Construction	06.08.25	CC	AO
C07	Construction Issue	30.07.25	CC	AO
C06	Construction Issue	13.06.25	CC	AO
C05	Construction Issue	23.05.25	CC	AO
C04	Construction Issue	07.02.25	CC	AO
P14	Stage 5 Issue	24.01.25	CC	AO
P13	Stage 4 Issue	28.03.24	CC	AO
P12	Stage 4 Issue	15.03.24	CC	AO
P11	Stage 4 Issue	05.01.24	CC	AO
C03	Stage 4 Issue	14.12.23	CC	AO
C02	Updated to reflect latest tree survey	10.06.22	RW	AO
C01	Stage 5 Issue	23.03.22	RW	AO
P10	Lighting and granite product spec updated	04.02.22	RW	AO
P09	EV charge point base plates & feeder pillars added, footways widened as clouded	17.12.21	RW	AO
P08	Watlington Rd footway increased to 3m width	11.11.21	RW	AO
P07	Automatic bollards updated	25.10.21	RW	AO
P06	Below ground vents added to building perimeter	05.10.21	RW	AO
P05	Updates to external lighting & manhole positions	23.07.21	RW	AO
P04	Coordinated manhole positions added	14.07.21	RW	AO
P03	Final Stage 4 Issue	09.07.21	SL	NI
P02	Drill Stage 4 Issue	02.07.21	RW	AO
P01	Stage 3 Issue	21.05.21	RW	AO
Rev	Description	Date	By	Chk

Revisions

Project S4 REVIEW AND AUTHORISATION

**Carnival Residential**

Client

**Feltham Construction Ltd**

Title

**RESIDENTIAL HARD LANDSCAPE LAYOUT**

Drawing No. Revision

**P1040-HLM-XX-00-DR-L-3080 C08**

Scale @ A1 Drawn

1:200 SL

Date Checked

21/05/21 NI



© HLM Architects  
Wool + Tailor Building  
Fifth Floor  
10-12 Allie Street  
London E1 8DE

www.hlmarchitects.com  
T. +44 (0) 20 7921 4800  
F. +44 (0) 20 7921 4850  
london@hlmarchitects.com

1:100  
1:200