

Strowdes Estate Landscape Visual Appraisal

Landscape Appraisal - Character



Drawing notes

- Application Site Boundary
- 1km Buffer
- Viewpoints

Image data sources

This drawing may contain: Ordnance Survey material by permission of Ordnance Survey on behalf of the Controller of His Majesty's Stationery Office © Crown Copyright, All rights reserved. © DEFRA / © Open Street Map data.

Stowdes Estate Landscape Visual Appraisal

Landscape Appraisal - Character



Gate onto Kenton's Lane

Former access to Kenton's – currently a glimpsed view, but gateway area / gap in hedge will be infilled with planting to screen possible views.

Strowdes Estate Landscape Visual Appraisal

Landscape Appraisal - Character



Culham Lane (Wellhouse access)

No view from either Culham Lane or this shared private driveway.

Strowdes Estate Landscape Visual Appraisal

Landscape Appraisal - Character



View southwards from inside plot (near to Wellhouse gate)
No view possible

Stowdes Estate Landscape Visual Appraisal

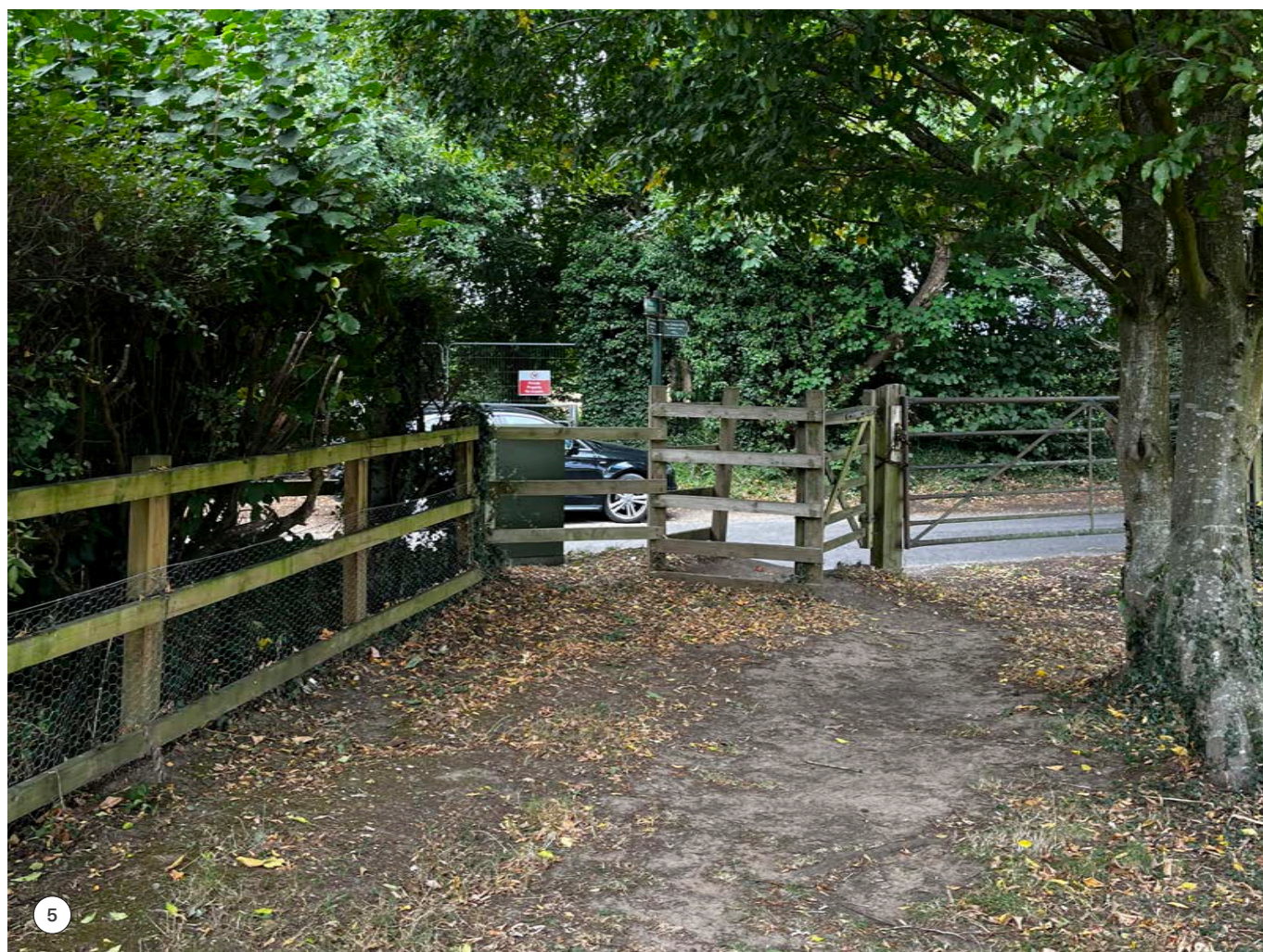
Landscape Appraisal - Character



Junction of Kenton's Lane & Culham Lane
No view possible

Stowdes Estate Landscape Visual Appraisal

Landscape Appraisal - Character



5

Public footpath & cricket field by Young's farm
No view possible

Stowdes Estate Landscape Visual Appraisal

Landscape Appraisal - Character



Culham Lane (Upper Culham Farm)
No view possible

Stowdes Estate Landscape Visual Appraisal

Landscape Appraisal - Character

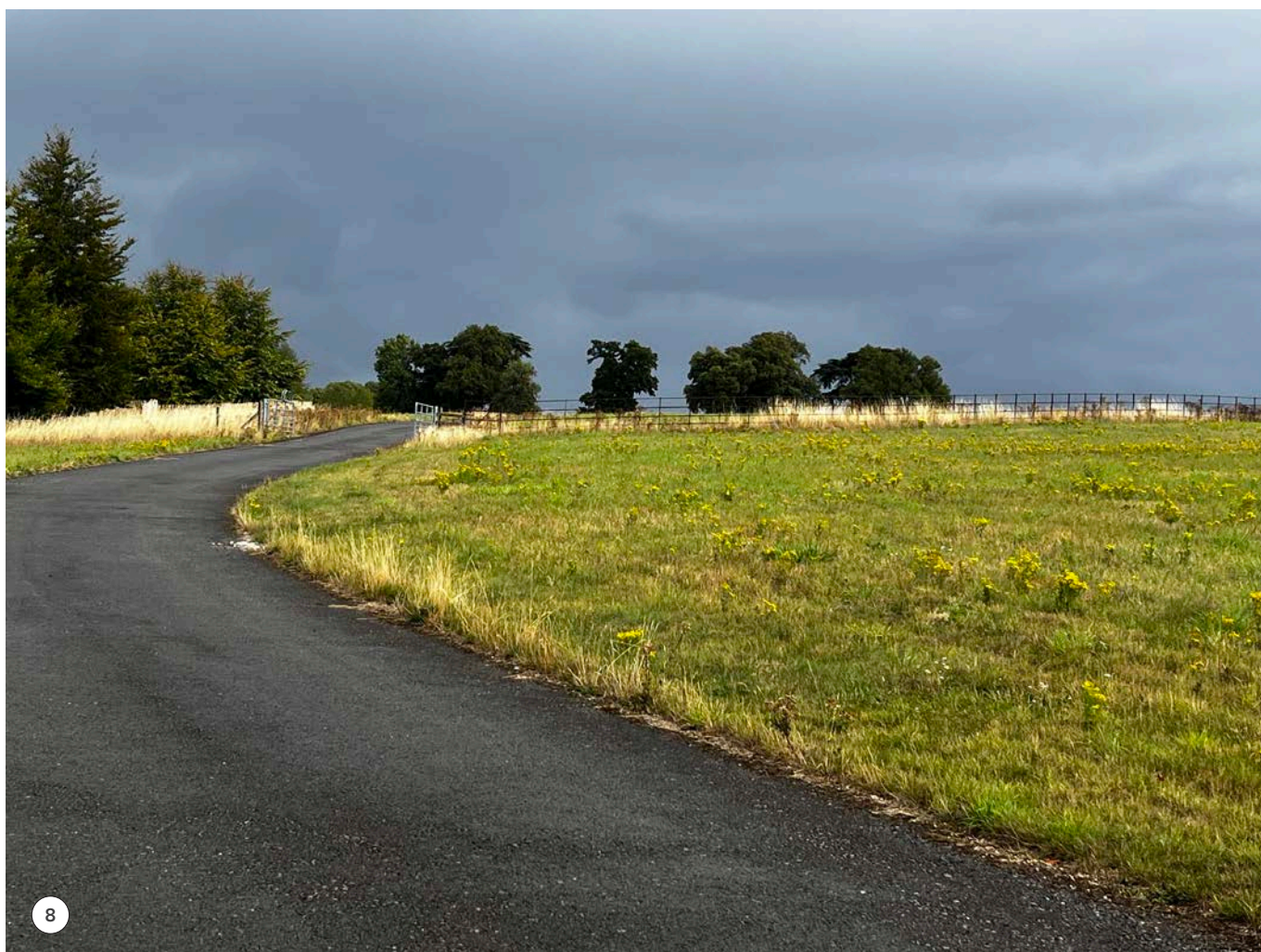


Kenton's Lane

Possible glimpsed view through this existing opening in the hedge in Kenton's Lane. However, proposed new hedging and planting is designed to block this view.

Strowdes Estate Landscape Visual Appraisal

Landscape Appraisal - Character



View from internal estate road (looking north)
No view possible