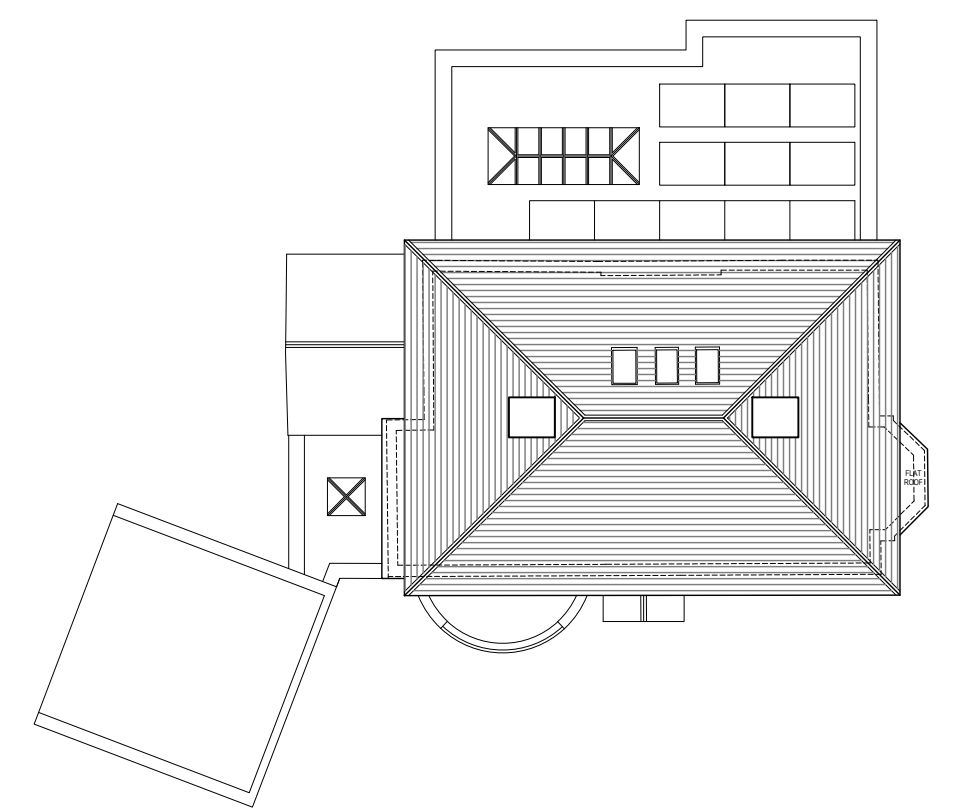



PLANNING ISSUE

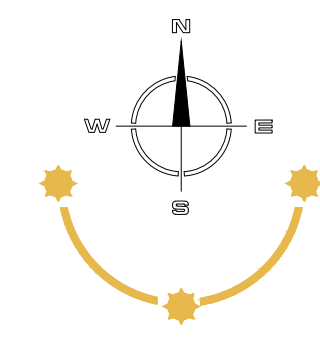


Scale 1:100 @ A1

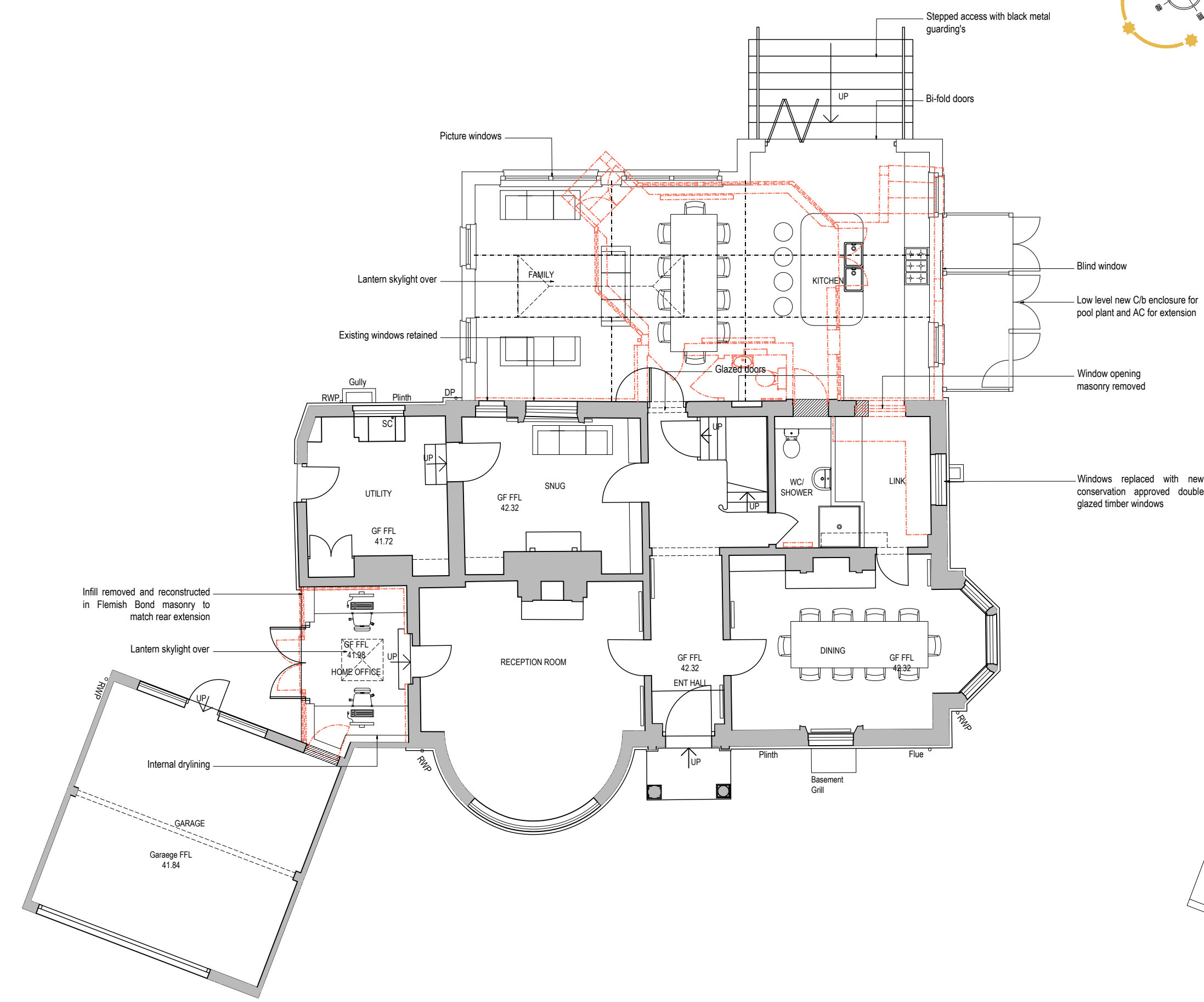


A horizontal scale bar with alternating black and white segments. It is labeled '0 m' at the left end, '5' at the midpoint, and '10 m' at the right end.

E: CHRIS@CHRISTOPHERJAMESARCHITECTURE.CO.UK



TREE + HEDGE
PROTECTION



Proposed Ground Floor Plan - 1:100 @ A1

Architectural floor plan of a proposed ground floor at a scale of 1:100. The plan shows a central building with four bedrooms, a family bathroom, a landing, and a master bedroom. It also includes several flat roof areas and a solar PV array. Annotations indicate the replacement of lead roofing with a solar panel array over a flat roof covering.

Room Labels and Details:

- Bedroom 4:** FF FFL 44.77
- Family Bathroom:** Includes a bathtub, toilet, and sink.
- Bedroom 5:** FF FFL 45.54
- Bedroom 3:** FF FFL 45.54
- Landing:** FF FFL 45.54
- Master Bed:** FF FFL 45.54
- Bedroom 2:** FF FFL 45.54
- EN S:** Entrance to the master bedroom.
- W:** Windows.
- C:** Closets.
- Flat Roof:** Several areas are labeled "FLAT ROOF".
- Solar PV Array:** Located on a flat roof area.

Annotations:

- Once weathered stone coping - new to front to suit
- Flat roof covering replaced with new lead grey roofing membrane - Solar panel array over



CHRISTOPHER JAMES
ARCHITECTURE