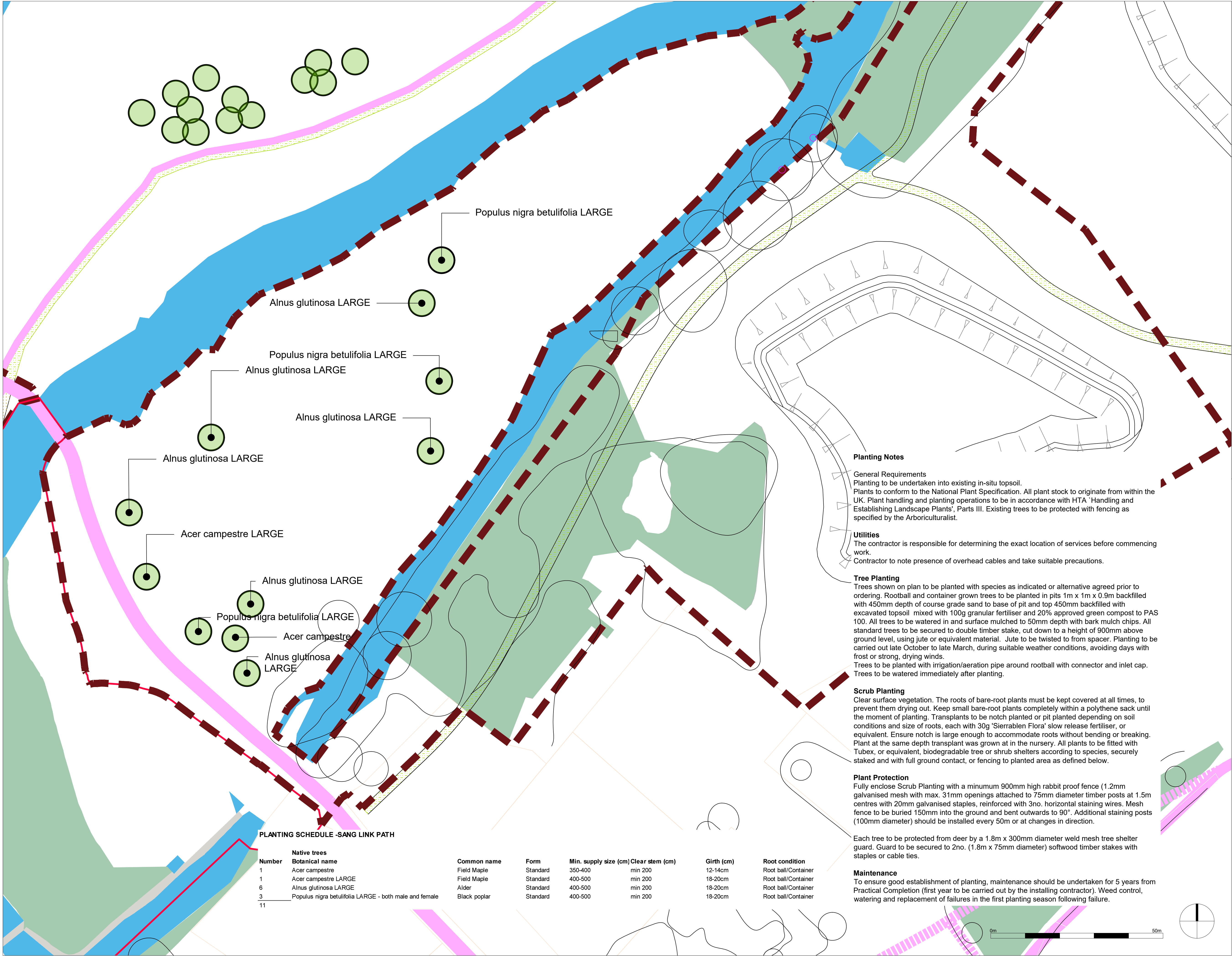


Reproduced from the Ordnance Survey Map with the permission of the Controller of H.M. Stationery Office - Crown copyright and database rights 2024 Ordnance Survey AC000080122
Published for the purposes of identification only and although believed to be correct, accuracy is not guaranteed.
Copyright: Savills (UK) Ltd



Key

- Boundary to SANG
- Route of existing public right of way to be retained
- Existing trees to be retained, refer also to FLAC drawings and information
- Existing woodland to be retained
- Existing grassland to be retained
- Proposed trees, refer to schedule for details
- Proposed Native Scrub Planting - Standard Mix, refer to schedule for details
- Proposed Native Scrub Planting - Wet Mix, refer to schedule for details
- Proposed Native Scrub Planting - Wet - River Corridor Mix, refer to schedule for details

Location Plan N.T.S

Rev. Date Note By

LODDON GARDEN VILLAGE

on behalf of
University of Reading

LA305
SANG LINK Planting Plan

Drawn by AIL/RA Checked by RA Scale 1:500@A1

Drawn on 28.05.25 Revision - Job 498048