



MAP 11.12.9a Results of Ground Level Tree
Assessment for Bats - Centre

- KEY
- New methodology
- PRF-M
 - PRF-I
- Previous methodology
- High suitability
 - Low suitability

SCALE: 1:1,350 at A3

0 20 40 60 80 Metres

N



CLIENT: University of Reading

PROJECT: Loddon Garden Village

DATE: 30 July 2025



MAP 11.12.9c Results of Ground Level Tree Assessment for Bats - North West

- KEY
- Site boundary
- New methodology
- PRF-M
 - PRF-I
 - PRF-I
- Previous methodology
- Moderate suitability
 - Low suitability
 - Low suitability
 - Moderate suitability

SCALE: 1:5,500 at A3

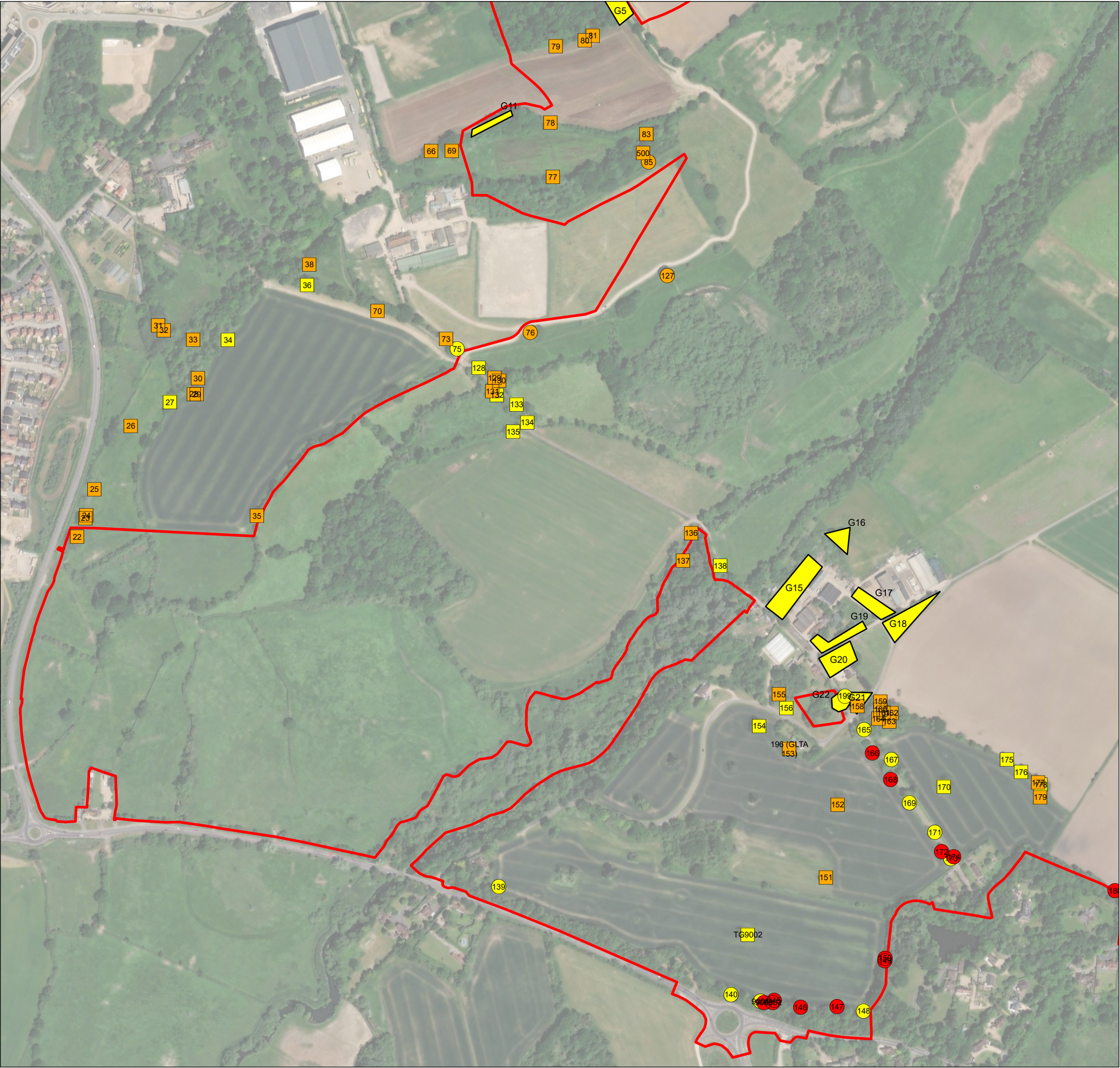
0 100 200 300 400 Metres



CLIENT: University of Reading

PROJECT: Loddon Garden Village

DATE: 30 July 2025



MAP 11.12.9e Results of Ground Level Tree Assessment for Bats - South West

KEY

Site boundary

New methodology

PRF-M

PRF-I

Previous methodology

High suitability

Moderate suitability

Low suitability

Low suitability

SCALE: 1:5,500 at A3

0100200300400

Metres

N



CLIENT: University of Reading

PROJECT: Loddon Garden Village

DATE: 30 July 2025

Y:\Loddon Garden Village, Sheffield 2201\GIS\Planning Application\Technical Appendices\Bats\Map11.12.9e_Bat_Tree_Inspection_SouthWest_P2342_3965_300725.aprx

P23/42

Aerial Image: Maxar, Microsoft