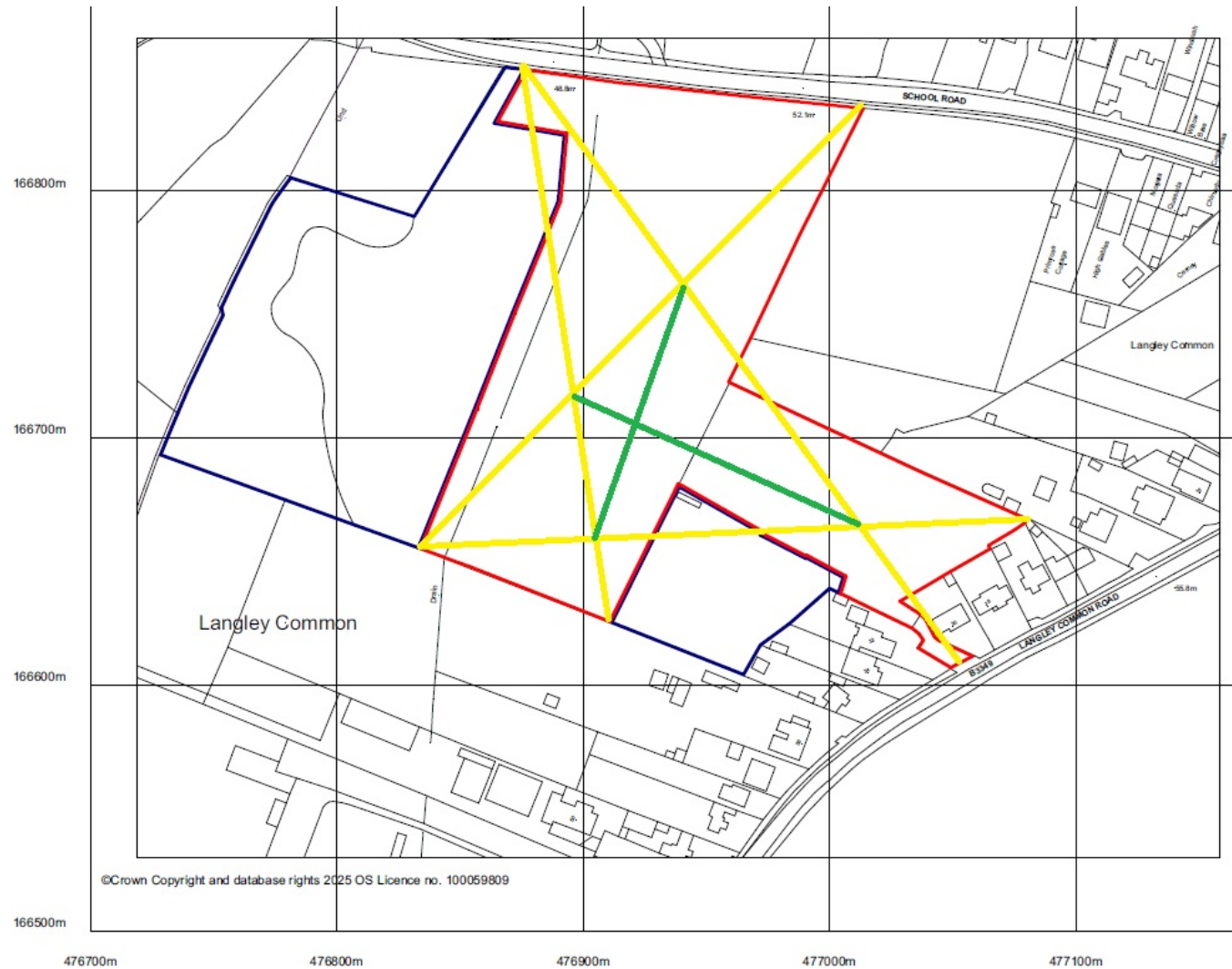
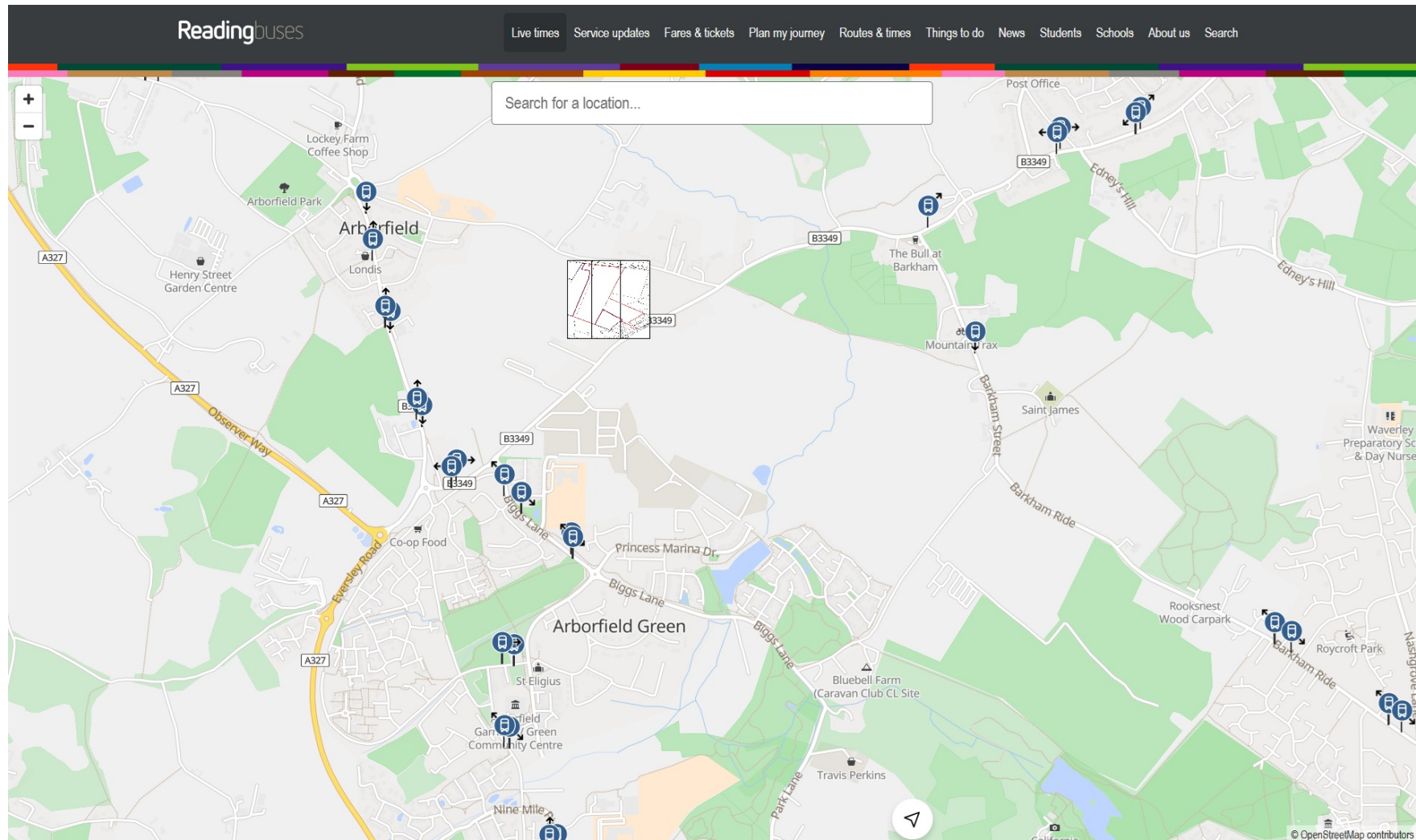


PA 252595 Appendix 1 – walked distances from application site to bus stops served by Reading Buses' Leopard 3 service

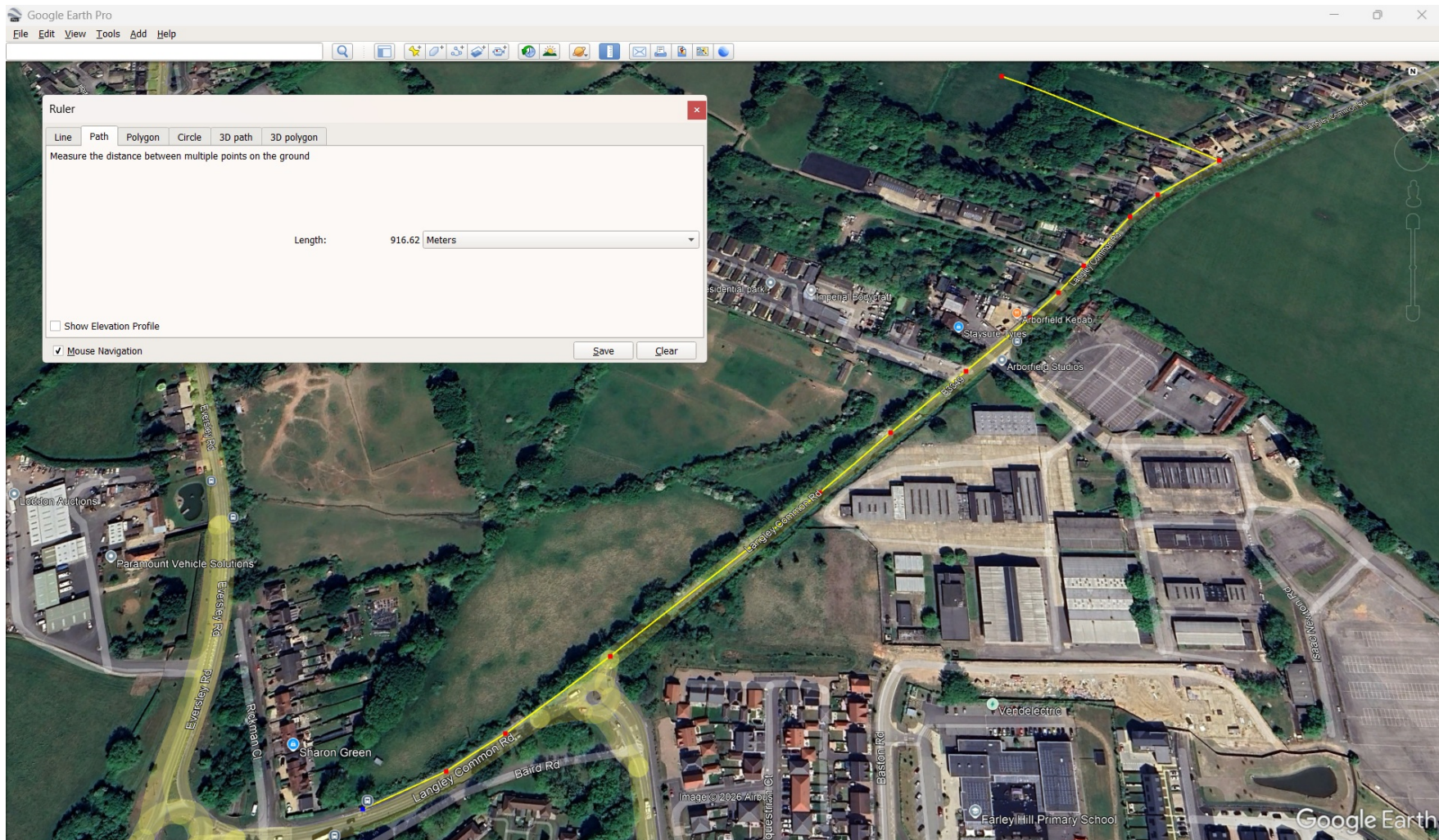


**Figure 1:** the approximate centre of the application site, depicted by the intersection of the two green lines. In the interest of accuracy, only the (developable) red-line area of the site has been used for the approximation and, in turn, datum reference point for the measurements in following figures 3, 4 and 6.



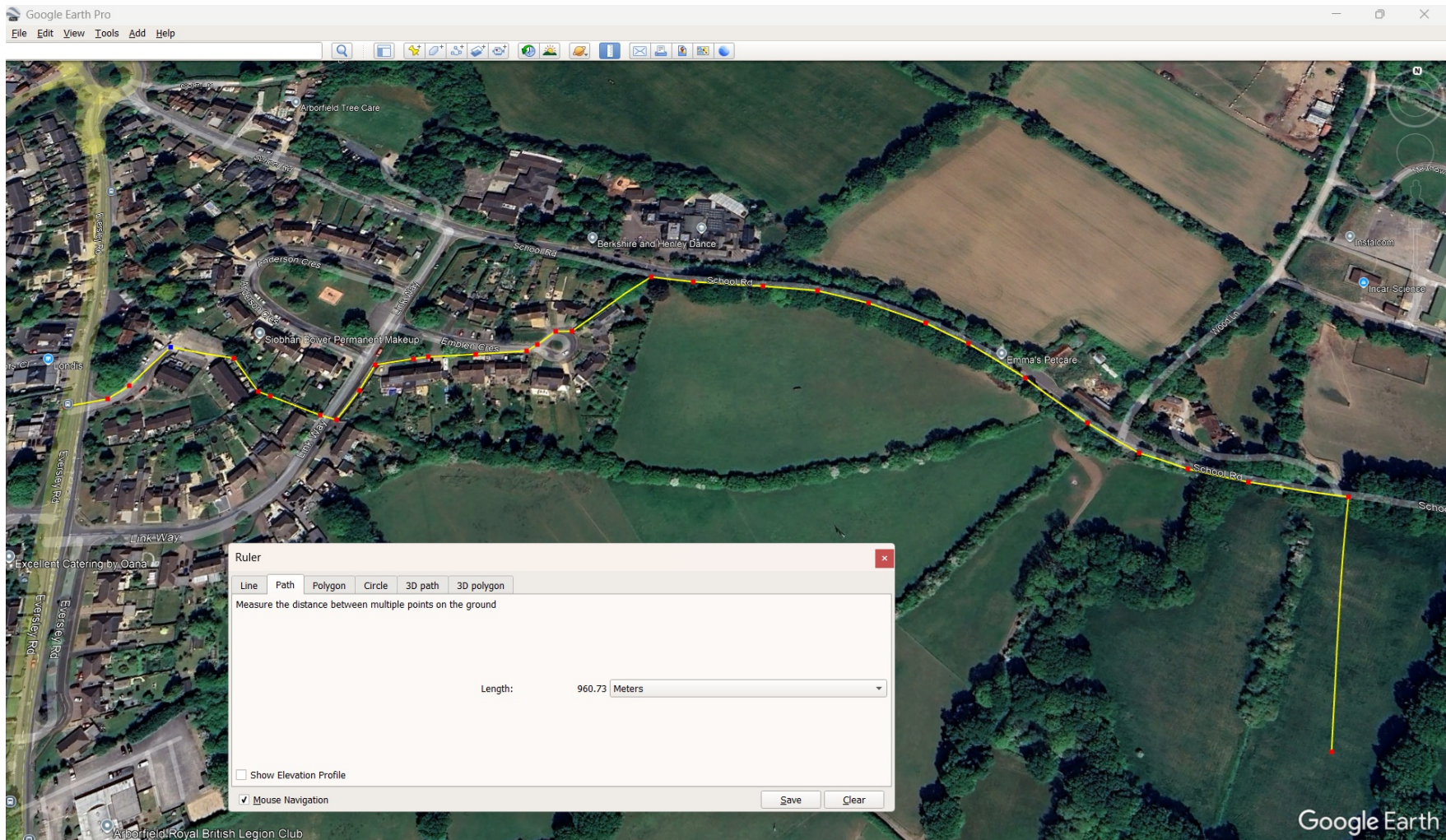
**Figure 2:** the route of the Leopard 3 bus service (depicted by roundels), in comparison to the approximate location of the application site, depicted by the white square. [Map sources: Reading Buses and drawing 001revP5 submitted for the application.]





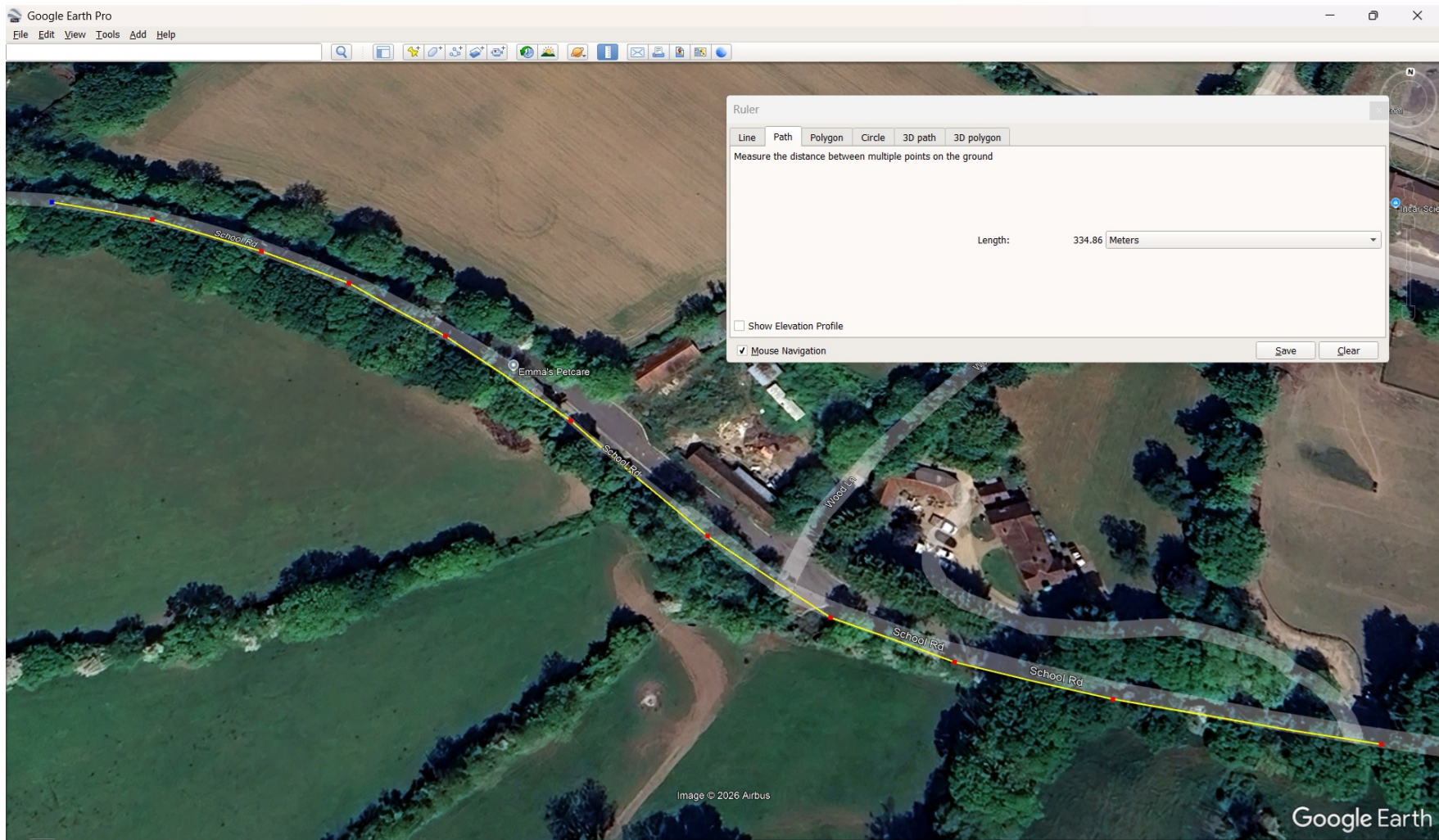
**Figure 3:** distance from the application site to the nearest operational bus stop (Biggs Lane) = circa **916** metres. The stop on the northern side of the carriageway (services to Wokingham) has been selected as the shorter distance of the two.





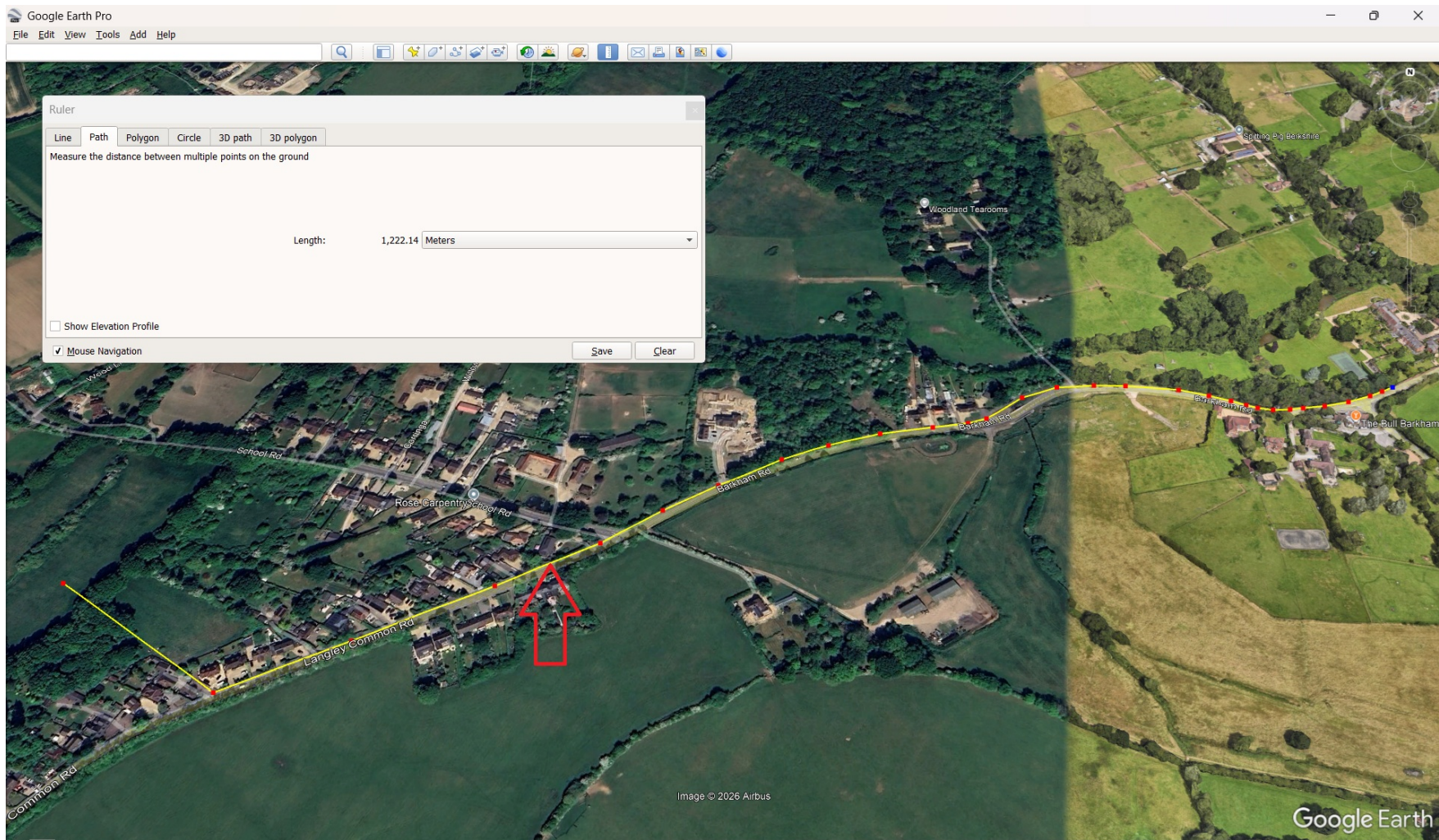
**Figure 4:** distance from the application site to the second-closest bus stop on the Eversley Road, Arborfield Cross (named the Swan on Reading Buses timetable but closer to the Londis mini-market) = circa **960** metres.



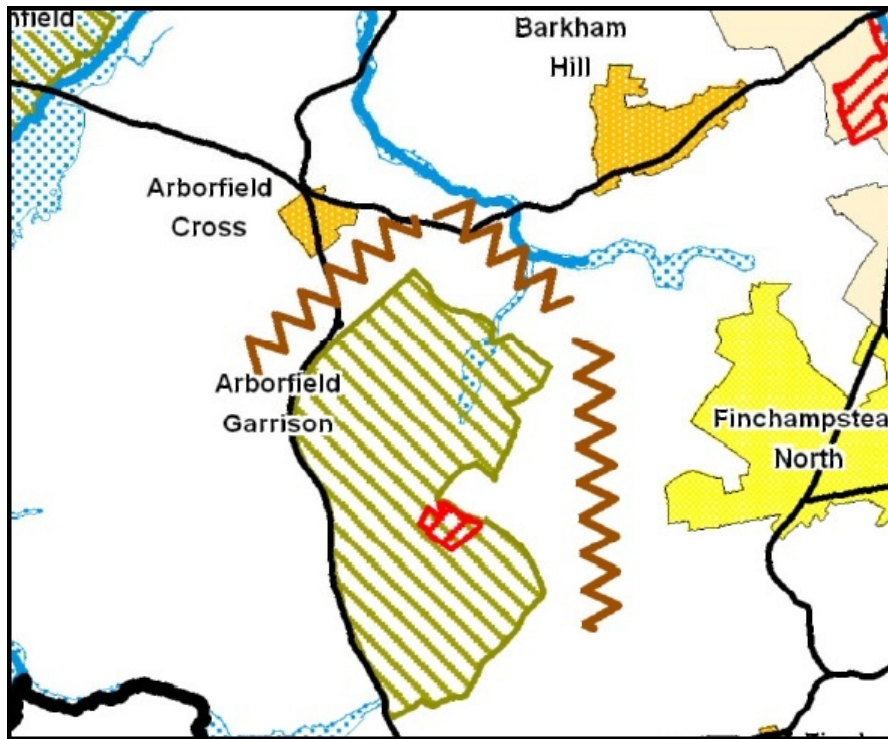


**Figure 5:** distance between the application site's proposed northern access and the first street light in School Road, heading towards Arborfield Cross = circa **334** metres. The centre-point of the site has not been used for this measurement because it is reasonable to presume that some form of street lighting would exist within it.





**Figure 6:** distance from the application site to the nearest operational bus stop east (the Bull PH, Barkham) = **1.22 km**. The approximate location of the non-operational bus stop in Langley Common Road, referred to in paragraph 3.5.1 of the Transport Statement, is indicated by the red arrow.



**Figure 7:** excerpt from the policies map in Wokingham BC's Adopted Core Strategy (penultimate page), depicting the settlement separation areas of policies CP18-21 (zig-zags). The application site falls within one of these.