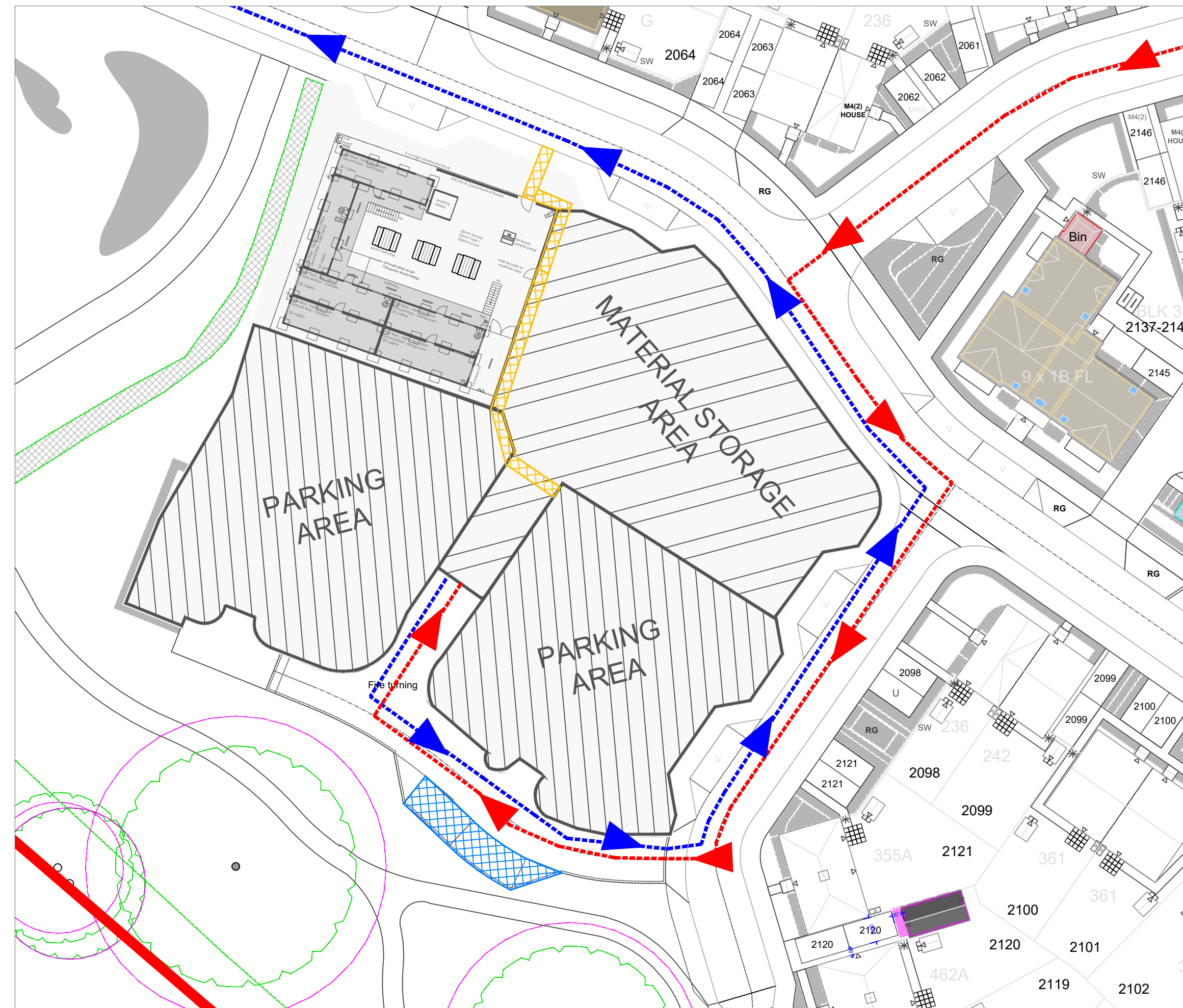


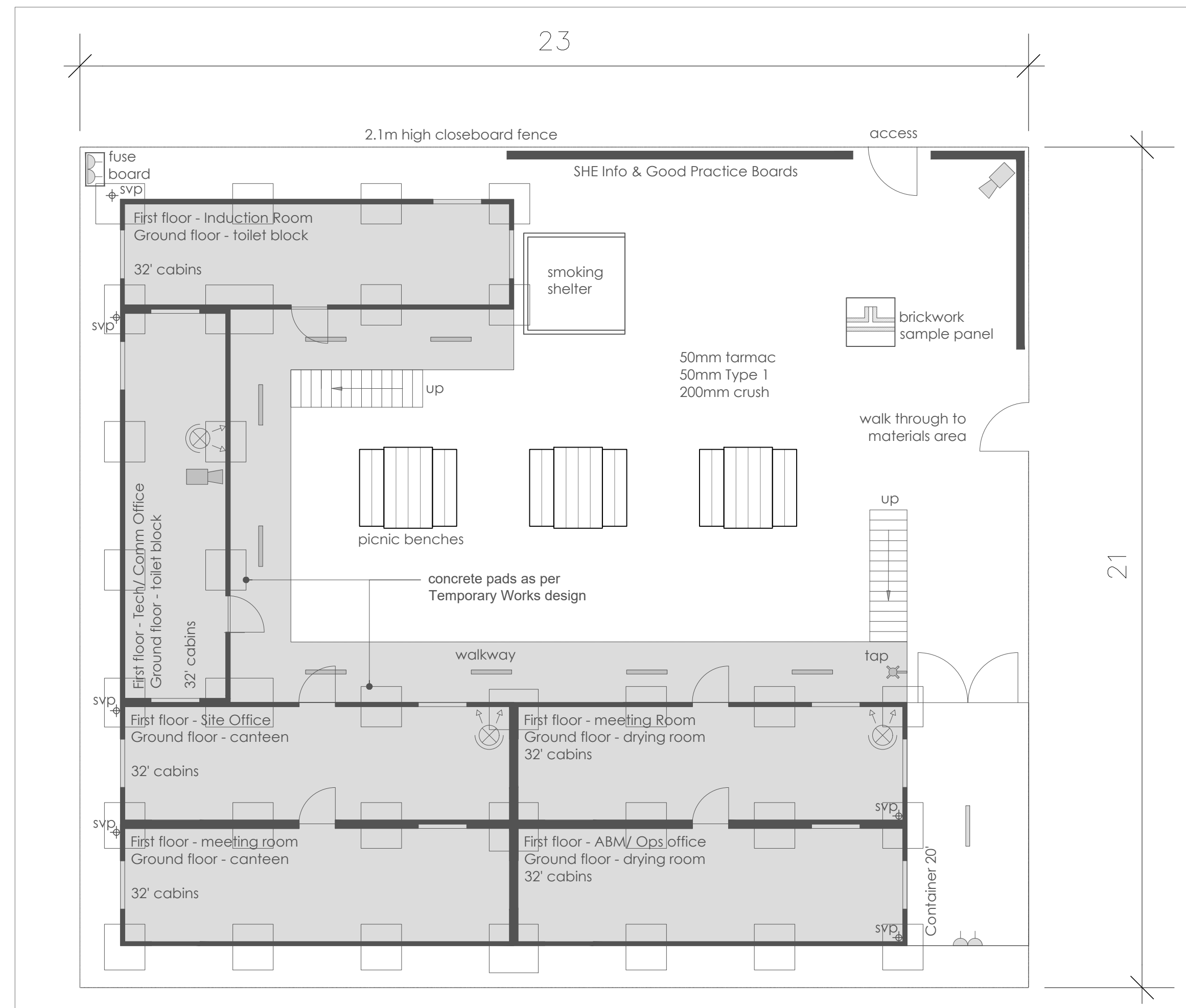
### PERMENANT COMPOUND LAYOUT








CONSTRUCTION TRAFFIC ROUTE



## COMPOUND SETTING OUT LAYOUT



KEY:

- |   |                                     |
|---|-------------------------------------|
|  | SITE BOUNDARY FENCING               |
|  | CONSTRUCTION TRAFFIC ENTRANCE ROUTE |
|  | CONSTRUCTION TRAFFIC EXIT ROUTE     |
|  | PEDESTRIAN FOOTPATH                 |
|  | WHEEL WASH LOCATION                 |

## Vistry Group

**Bovis**  
**Homes**

**Linden**  
**HOMES**

**Vistry**  
Partnerships

Vistry Thames Valley  
550 Oracle Parkway, Thames Valley Park,  
Reading, RG6 1PT

Drawing Title:

SOUTH WOKINGHAM, PARCEL R11  
COMPOUND LAYOUT

Date:  
NOV 2025

Scale:  
NTS @ A1

Drawn/ Checked:  
JH

Drawing Number:  
HSW11-CL-001

Rev:

Do not scale from this drawing. All dimensions & measurements to be checked on site.  
This drawing is the copyright of Bovis Homes Ltd.