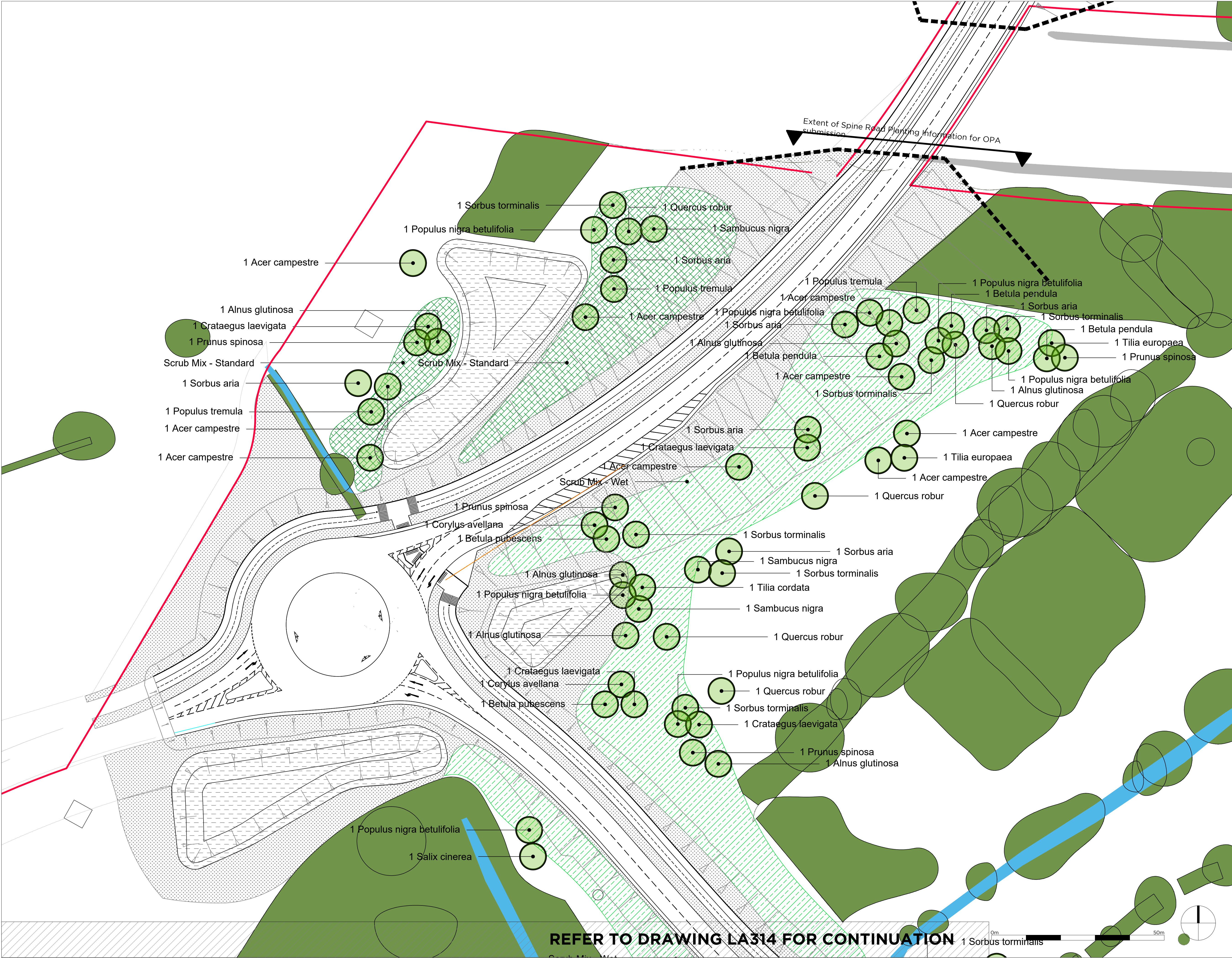


Reproduced from the Ordnance Survey Map with the permission of the Controller of HM Stationery Office. Crown copyright and database rights 2024. Ordnance Survey/ACC000808022. Copyright Savills (UK) Ltd.

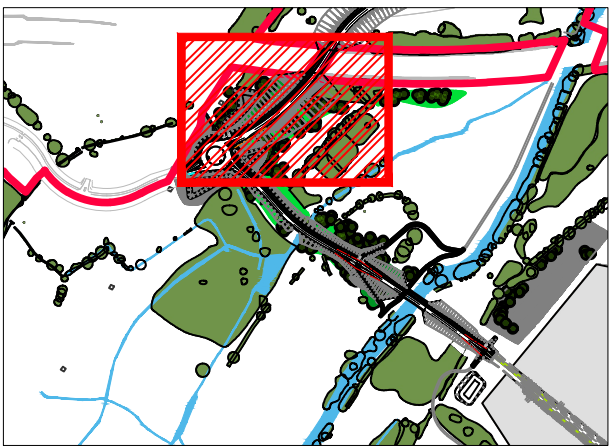


Key

- Existing tree to be retained, refer to FLAC drawings and information for details and protection requirements
- Proposed spine road layout, refer to ALP drawings and information for details
- Proposed attenuation basins, refer to ALP drawings and information for details
- Proposed tree, refer to schedule for details
- Proposed standard thicket planting mix, refer to planting schedule for details
- Proposed 'wet' thicket planting mix, refer to planting schedule for details
- Proposed verge seed mix: Special General Purpose Meadow Mix EM3 - Supplied by Emorsgate Seeds, or equivalent, sown at 4g/m²
- Proposed basin seed mix: Wetland Meadow Mix EM8, supplied by Emorsgate Seeds, or equivalent, sown at 4 g/m²
- Proposed basin seed mix: Wetland Meadow Mix EM8, supplied by Emorsgate Seeds, or equivalent, sown at 4 g/m²

- Notes:
- Tree positions and numbers shown indicatively and to be co-ordinated with detailed street lighting and highways requirements and below ground utilities.
 - Tree symbols shown for illustrative purposes and are not intended to represent ultimate canopy spread
 - Refer to ALP drawings and information for proposed road alignment and associated details
 - Refer to ALP drawings and information for proposed drainage elements and associated details
 - Drainage basins shown indicatively
 - Development parcels shown for indicative purposes only
 - Access roads into development parcels shown based current design information, exact location and details to be confirmed
 - Bridge crossings shown indicatively, details and design to be agreed

Location Plan N.T.S



Rev.	Date	Note	By
C	25/07/25	DRAWING NOTES UPDATED	RA

LODDON GARDEN VILLAGE

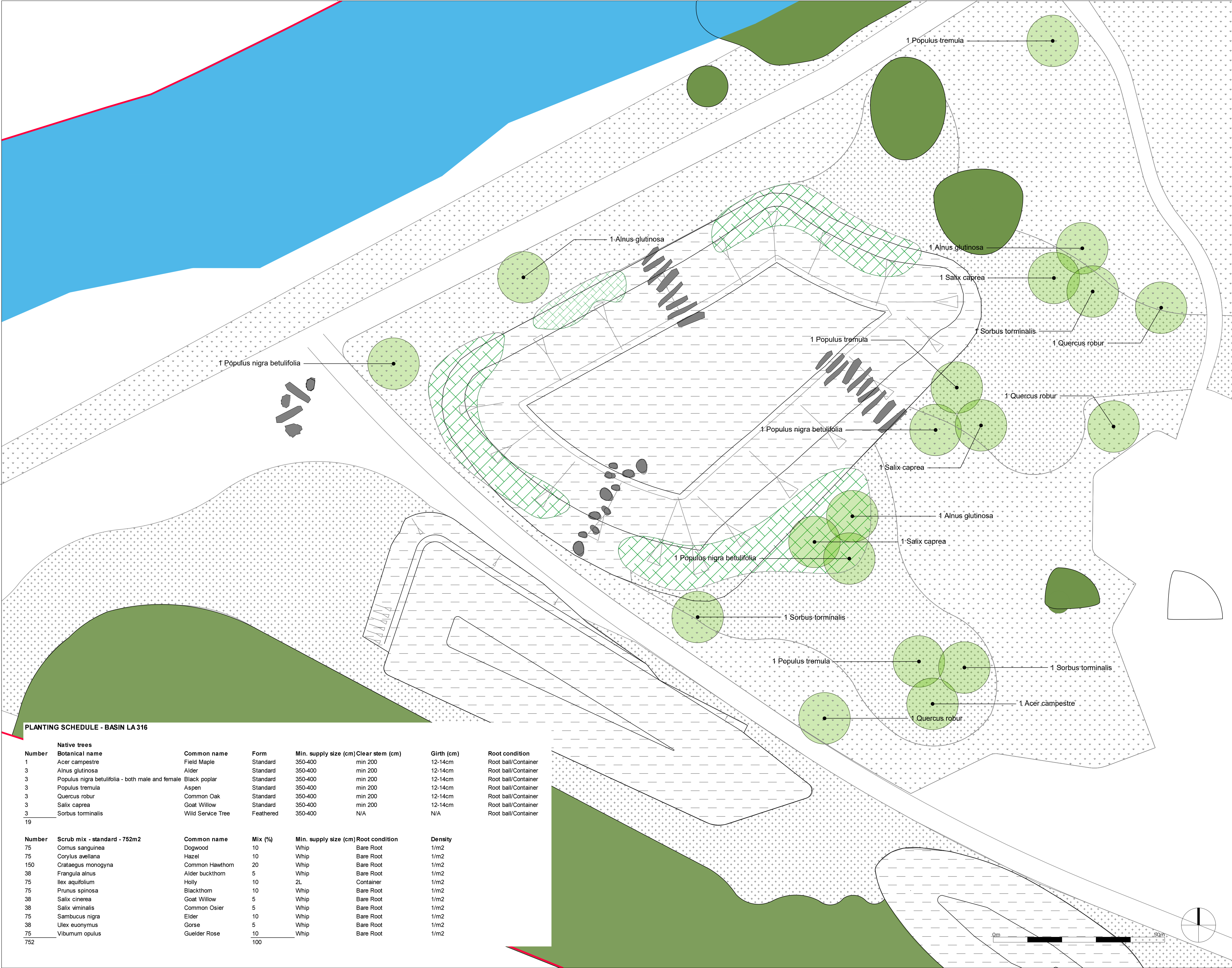
on behalf of
University of Reading

LA315
M4 Link Road Planting Plan - Sheet 2 of 2

Drawn by MA	Checked by RA	Scale 1:500@A1
Drawn on 09.06.25	Revision C	Job 498048



Reproduced from the Ordnance Survey Map with the permission of the controller of HM Stationery Office. Crown copyright and database rights 2024. Ordnance Survey/AC0000808022. Published for the purposes of identification only and although believed to be correct, accuracy is not guaranteed. Copyright Savills (UK) Ltd.



PLANTING SCHEDULE - BASIN LA 316

Native trees							
Number	Botanical name	Common name	Form	Min. supply size (cm)	Clear stem (cm)	Girth (cm)	Root condition
1	Acer campestre	Field Maple	Standard	350-400	min 200	12-14cm	Root ball/Container
3	Alnus glutinosa	Alder	Standard	350-400	min 200	12-14cm	Root ball/Container
3	Populus nigra betulifolia - both male and female	Black poplar	Standard	350-400	min 200	12-14cm	Root ball/Container
3	Populus tremula	Aspen	Standard	350-400	min 200	12-14cm	Root ball/Container
3	Quercus robur	Common Oak	Standard	350-400	min 200	12-14cm	Root ball/Container
3	Salix caprea	Goat Willow	Standard	350-400	min 200	12-14cm	Root ball/Container
3	Sorbus torminalis	Wild Service Tree	Feathered	350-400	N/A	N/A	Root ball/Container
19							
Number	Scrub mix - standard - 752m2	Common name	Mix (%)	Min. supply size (cm)	Root condition	Density	
75	Cornus sanguinea	Dogwood	10	Whip	Bare Root	1/m2	
75	Corylus avellana	Hazel	10	Whip	Bare Root	1/m2	
150	Crataegus monogyna	Common Hawthorn	20	Whip	Bare Root	1/m2	
38	Frangula alnus	Alder buckthorn	5	Whip	Bare Root	1/m2	
75	Ilex aquifolium	Holly	10	2L	Container	1/m2	
75	Prunus spinosa	Blackthorn	10	Whip	Bare Root	1/m2	
38	Salix cinerea	Goat Willow	5	Whip	Bare Root	1/m2	
38	Salix viminalis	Common Osier	5	Whip	Bare Root	1/m2	
75	Sambucus nigra	Elder	10	Whip	Bare Root	1/m2	
38	Ulex euonymus	Gorse	5	Whip	Bare Root	1/m2	
75	Viburnum opulus	Gelder Rose	10	Whip	Bare Root	1/m2	
752	100						

Key

Existing tree to be retained, refer to FLAC drawings and information for details and protection requirements

Proposed scrub mix - standard

Proposed attenuation basins, refer ALP drawings and information for details.

Proposed tree, refer to schedule for details

Proposed Special General Purpose Meadow Mix EM3 - Supplied by Emorsgate Seeds, or equivalent, sown at 4g/m²

Proposed EL1 Flowering Lawn Mix - Supplied by Emorsgate Seeds, or equivalent, sown at 4g/m²

Proposed basin seed mix: Wetland Meadow Mix EM8, supplied by Emorsgate Seeds, or equivalent, sown at 4 g/m²

Notes:

-

Tree positions and numbers shown indicatively and to be co-ordinated with detailed street lighting and highways requirements and below ground utilities.

-

Refer to ALP drawings and information for proposed road alignment and associated details

-

Refer to ALP drawings and information for proposed drainage elements and associated details

-

Drainage basins shown indicatively

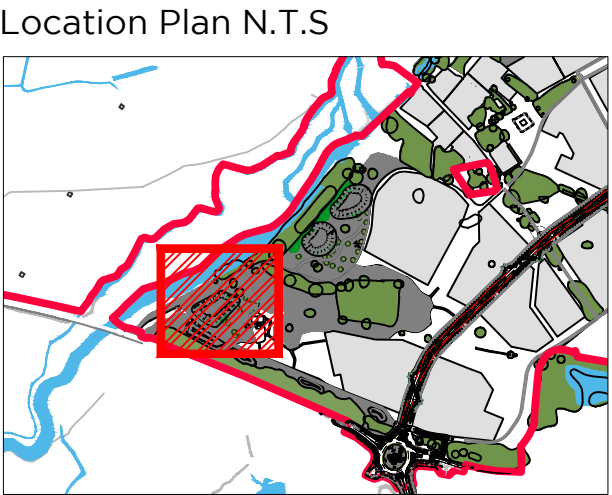
-

Development parcels shown for indicative purposes only

-

Access roads into development parcels shown based current design information, exact location and details to be confirmed

-

Bridge crossings shown indicatively, details and design to be agreed

Rev.	Date	Note	By
A	24/07/25	LAYOUT UPDATED	RA

LODDON GARDEN VILLAGE

on behalf of University of Reading

LA316

Attenuation Basin Planting Plan - Sheet 1 of 6

Drawn by	Checked by	Scale
MA	RA	1:250@A1
Drawn on	Revision	Job
18.06.25	A	498048



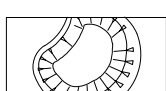






PLANTING SCHEDULE - BASIN LA317

Native trees							
Number	Botanical name	Common name	Form	Min. supply size (cm)	Clear stem (cm)	Girth (cm)	Root condition
6	Acer campestre	Field Maple	Standard	350-400	min 200	12-14cm	Root ball/Container
3	Alnus glutinosa	Alder	Standard	350-400	min 200	12-14cm	Root ball/Container
3	Crataegus laevigata	Midland Hawthorn	Standard	350-400	min 200	12-14cm	Root ball/Container
3	Populus nigra betulifolia - both male and female	Black poplar	Standard	350-400	min 200	12-14cm	Root ball/Container
3	Populus tremula	Aspen	Standard	350-400	min 200	12-14cm	Root ball/Container
3	Quercus robur	Common Oak	Standard	350-400	min 200	12-14cm	Root ball/Container
3	Salix caprea	Goat Willow	Standard	350-400	min 200	12-14cm	Root ball/Container
3	Sorbus torminalis	Wild Service Tree	Feathered	350-400	N/A	N/A	Root ball/Container

Number	Scrub mix - standard - 2440m2	Common name	Mix (%)	Min. supply size (cm)	Root condition	Density
244	Cornus sanguinea	Dogwood	10	Whip	Bare Root	1/m2
244	Corylus avellana	Hazel	10	Whip	Bare Root	1/m2
366	Crataegus monogyna	Common Hawthorn	15	Whip	Bare Root	1/m2
244	Frangula alnus	Alder buckthorn	10	Whip	Bare Root	1/m2
244	Ilex aquifolium	Holly	10	2L	Container	1/m2
244	Prunus spinosa	Blackthorn	10	Whip	Bare Root	1/m2
122	Salix cinerea	Goat Willow	5	Whip	Bare Root	1/m2
122	Salix viminalis	Common Osier	5	Whip	Bare Root	1/m2
244	Sambucus nigra	Elder	10	Whip	Bare Root	1/m2
122	Ulex euonymus	Gorse	5	Whip	Bare Root	1/m2
244	Viburnum opulus	Gelder Rose	10	Whip	Bare Root	1/m2
2440			100			

Key

-  Existing tree to be retained, refer to FLAC drawings and information for details and protection requirements
-  Proposed scrub mix - standard
-  Proposed attenuation basins, refer ALP drawings and information for details.
-  Proposed tree, refer to schedule for details
-  Proposed Special General Purpose Meadow Mix EM3 - Supplied by Emorsgate Seeds, or equivalent, sown at 4g/m²
-  Proposed EL1 Flowering Lawn Mix - Supplied by Emorsgate Seeds, or equivalent, sown at 4g/m²
-  Proposed basin seed mix: Wetland Meadow Mix EM8, supplied by Emorsgate Seeds, or equivalent, sown at 4 g/m²

- Notes:
- Tree positions and numbers shown indicatively and to be co-ordinated with detailed street lighting and highways requirements and below ground utilities.
 - Refer to ALP drawings and information for proposed road alignment and associated details
 - Refer to ALP drawings and information for proposed drainage elements and associated details
 - Drainage basins shown indicatively
 - Development parcels shown for indicative purposes only
 - Access roads into development parcels shown based current design information, exact location and details to be confirmed
 - Bridge crossings shown indicatively, details and design to be agreed

Location Plan N.T.S



Rev.	Date	Note	By
A	24/07/25	Drawing title updated	RA

LODDON GARDEN VILLAGE

on behalf of
University of Reading

LA317
Attenuation Basin Planting
Plan - Sheet 2 of 6

Drawn by	Checked by	Scale
MA	RA	1:250@A1

Drawn on	Revision	Job
18.06.25	A	498048

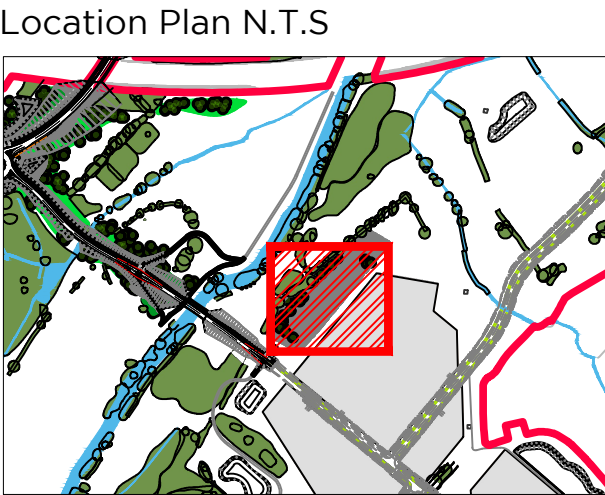




Key

- Existing tree to be retained, refer to FLAC drawings and information for details and protection requirements
- Proposed scrub mix - standard
- Proposed attenuation basins, refer ALP drawings and information for details.
- Proposed tree, refer to schedule for details
- Proposed Special General Purpose Meadow Mix EM3 - Supplied by Emorsgate Seeds, or equivalent, sown at 4g/m²
- Proposed EL1 Flowering Lawn Mix - Supplied by Emorsgate Seeds, or equivalent, sown at 4g/m²
- Proposed basin seed mix: Wetland Meadow Mix EM8, supplied by Emorsgate Seeds, or equivalent, sown at 4 g/m²

- Notes:**
- Tree positions and numbers shown indicatively and to be co-ordinated with detailed street lighting and highways requirements and below ground utilities.
 - Refer to ALP drawings and information for proposed road alignment and associated details
 - Refer to ALP drawings and information for proposed drainage elements and associated details
 - Drainage basins shown indicatively
 - Development parcels shown for indicative purposes only
 - Access roads into development parcels shown based current design information, exact location and details to be confirmed
 - Bridge crossings shown indicatively, details and design to be agreed



Rev.	Date	Note	By
A	24/07/25	Layout updated	RA

LODDON GARDEN VILLAGE

on behalf of
University of Reading

LA318 Attenuation Basin Planting Plan - Sheet 3 of 6

Drawn by	Checked by	Scale
MA	RA	1:250@A1

Drawn on	Revision	Job
18.06.25	A	498048



PLANTING SCHEDULE - BASIN LA318

Number	Native trees Botanical name	Common name	Form	Min. supply size (cm)	Clear stem (cm)	Girth (cm)	Root condition
5	Acer campestre	Field Maple	Standard	350-400	min 200	12-14cm	Root ball/Container
8	Corylus avellana	Hazel	Multi-stem	350-400	N/A	N/A	Root ball/Container
3	Crataegus laevigata	Midland Hawthorn	Standard	350-400	min 200	12-14cm	Root ball/Container
1	Populus tremula	Aspen	Standard	350-400	min 200	12-14cm	Root ball/Container
2	Quercus robur	Common Oak	Standard	350-400	min 200	12-14cm	Root ball/Container
3	Sorbus torminalis	Wild Service Tree	Feathered	350-400	N/A	N/A	Root ball/Container
1	Tilia europea	Common Lime	Standard	350-400	min 200	12-14cm	Root ball/Container

