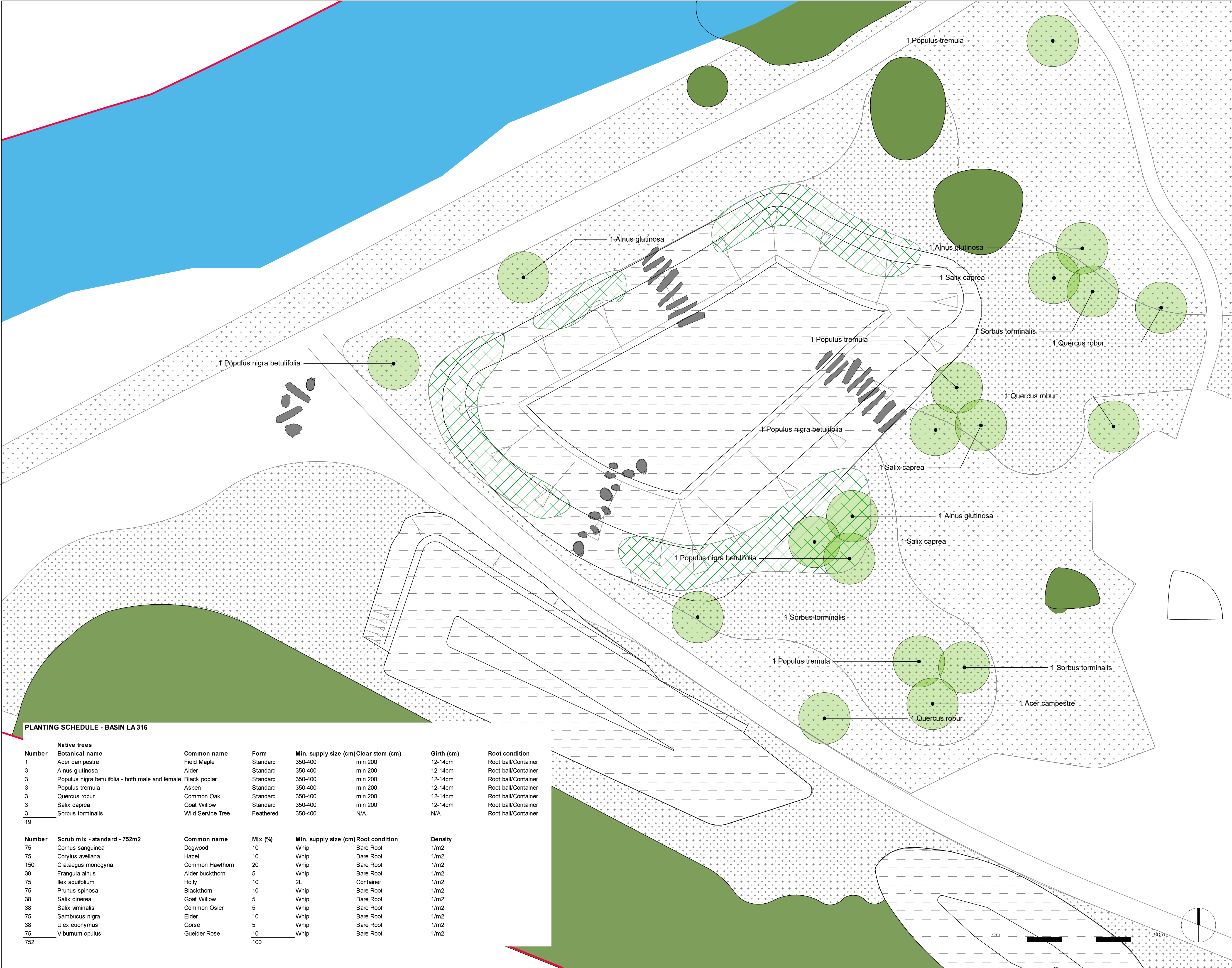


Reproduced from the Ordnance Survey Map with the permission of the controller of HM Stationery Office. Crown copyright and database rights 2024. Ordnance Survey/AC0000808022. Published for the purposes of identification only and although believed to be correct, accuracy is not guaranteed. Copyright Savills UK Ltd.



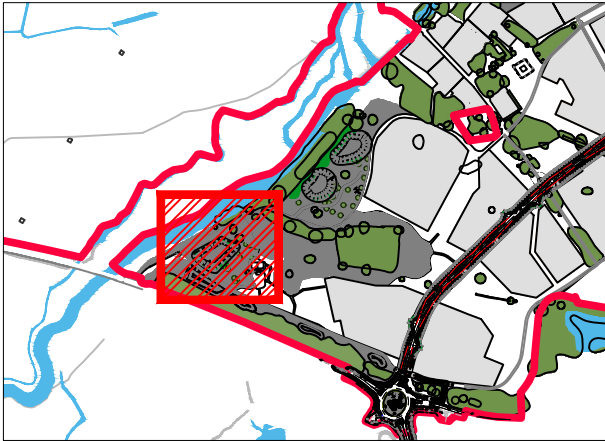
PLANTING SCHEDULE - BASIN LA 316

Native trees							
Number	Botanical name	Common name	Form	Min. supply size (cm)	Clear stem (cm)	Girth (cm)	Root condition
1	Acer campestre	Field Maple	Standard	350-400	min 200	12-14cm	Root ball/Container
3	Alnus glutinosa	Alder	Standard	350-400	min 200	12-14cm	Root ball/Container
3	Populus nigra betulifolia - both male and female	Black poplar	Standard	350-400	min 200	12-14cm	Root ball/Container
3	Populus tremula	Aspen	Standard	350-400	min 200	12-14cm	Root ball/Container
3	Quercus robur	Common Oak	Standard	350-400	min 200	12-14cm	Root ball/Container
3	Salix caprea	Goat Willow	Standard	350-400	min 200	12-14cm	Root ball/Container
3	Sorbus torminalis	Wild Service Tree	Feathered	350-400	N/A	N/A	Root ball/Container
19							
Number	Scrub mix - standard - 752m2	Common name	Mix (%)	Min. supply size (cm)	Root condition	Density	
75	Cornus sanguinea	Dogwood	10	Whip	Bare Root	1/m2	
75	Corylus avellana	Hazel	10	Whip	Bare Root	1/m2	
150	Crataegus monogyna	Common Hawthorn	20	Whip	Bare Root	1/m2	
38	Frangula alnus	Alder buckthorn	5	Whip	Bare Root	1/m2	
75	Ilex aquifolium	Holly	10	2L	Container	1/m2	
75	Prunus spinosa	Blackthorn	10	Whip	Bare Root	1/m2	
38	Salix cinerea	Goat Willow	5	Whip	Bare Root	1/m2	
38	Salix viminalis	Common Osier	5	Whip	Bare Root	1/m2	
75	Sambucus nigra	Elder	10	Whip	Bare Root	1/m2	
38	Ulex euonymus	Gorse	5	Whip	Bare Root	1/m2	
75	Viburnum opulus	Gelder Rose	10	Whip	Bare Root	1/m2	
752			100				

- Key
- Existing tree to be retained, refer to FLAC drawings and information for details and protection requirements
 - Proposed scrub mix - standard
 - Proposed attenuation basins, refer ALP drawings and information for details.
 - Proposed tree, refer to schedule for details
 - Proposed Special General Purpose Meadow Mix EM3 - Supplied by Emorsgate Seeds, or equivalent, sown at 4g/m²
 - Proposed EL1 Flowering Lawn Mix - Supplied by Emorsgate Seeds, or equivalent, sown at 4g/m²
 - Proposed basin seed mix: Wetland Meadow Mix EM8, supplied by Emorsgate Seeds, or equivalent, sown at 4 g/m²

- Notes:
- Tree positions and numbers shown indicatively and to be co-ordinated with detailed street lighting and highways requirements and below ground utilities.
 - Refer to ALP drawings and information for proposed road alignment and associated details
 - Refer to ALP drawings and information for proposed drainage elements and associated details
 - Drainage basins shown indicatively
 - Development parcels shown for indicative purposes only
 - Access roads into development parcels shown based current design information, exact location and details to be confirmed
 - Bridge crossings shown indicatively, details and design to be agreed

Location Plan N.T.S



Rev.	Date	Note	By
A	24/07/25	LAYOUT UPDATED	RA

LODDON GARDEN VILLAGE

on behalf of
University of Reading

LA316 Attenuation Basin Planting Plan - Sheet 1 of 6

Drawn by
MA

Checked by
RA

Scale
1:250@A1

Drawn on
18.06.25

Revision
A

Job
498048

