

DRAWINGS ISSUED - PLANNING				
Sheet Number	Sheet Name	Date Issued	Rev	Rev. Date
D&PM 4064 / 00	Cover Page	Nov 2025		
D&PM 4064 / 01	Location Plan	Nov 2025		
D&PM 4064 / 02	Existing Site Plan	Nov 2025		
D&PM 4064 / 03	Proposed Site Plan	Nov 2025		
D&PM 4064 / 04	Existing Roof Plan	Nov 2025		
D&PM 4064 / 05	Proposed Roof Plan	Nov 2025		
D&PM 4064 / 06	Existing Ground Floor Layout Plan	Nov 2025		
D&PM 4064 / 07	Existing First Floor Layout Plan	Nov 2025		
D&PM 4064 / 08	Existing Loft Floor Layout Plan	Nov 2025		
D&PM 4064 / 09	Proposed Ground Floor Layout Plan	Nov 2025		
D&PM 4064 / 10	Proposed First Floor Layout Plan	Nov 2025		
D&PM 4064 / 11	Proposed Loft Floor Layout Plan	Nov 2025		
D&PM 4064 / 12	Existing Elevations (1 of 2)	Nov 2025		
D&PM 4064 / 13	Existing Elevations (2 of 2)	Nov 2025		
D&PM 4064 / 14	Proposed Elevations (1 of 2)	Nov 2025		
D&PM 4064 / 15	Proposed Elevations (2 of 2)	Nov 2025		
D&PM 4064 / 16	Proposed Section A-A	Nov 2025		
D&PM 4064 / 17	Parking Provision	Nov 2025		

Proposed New Build

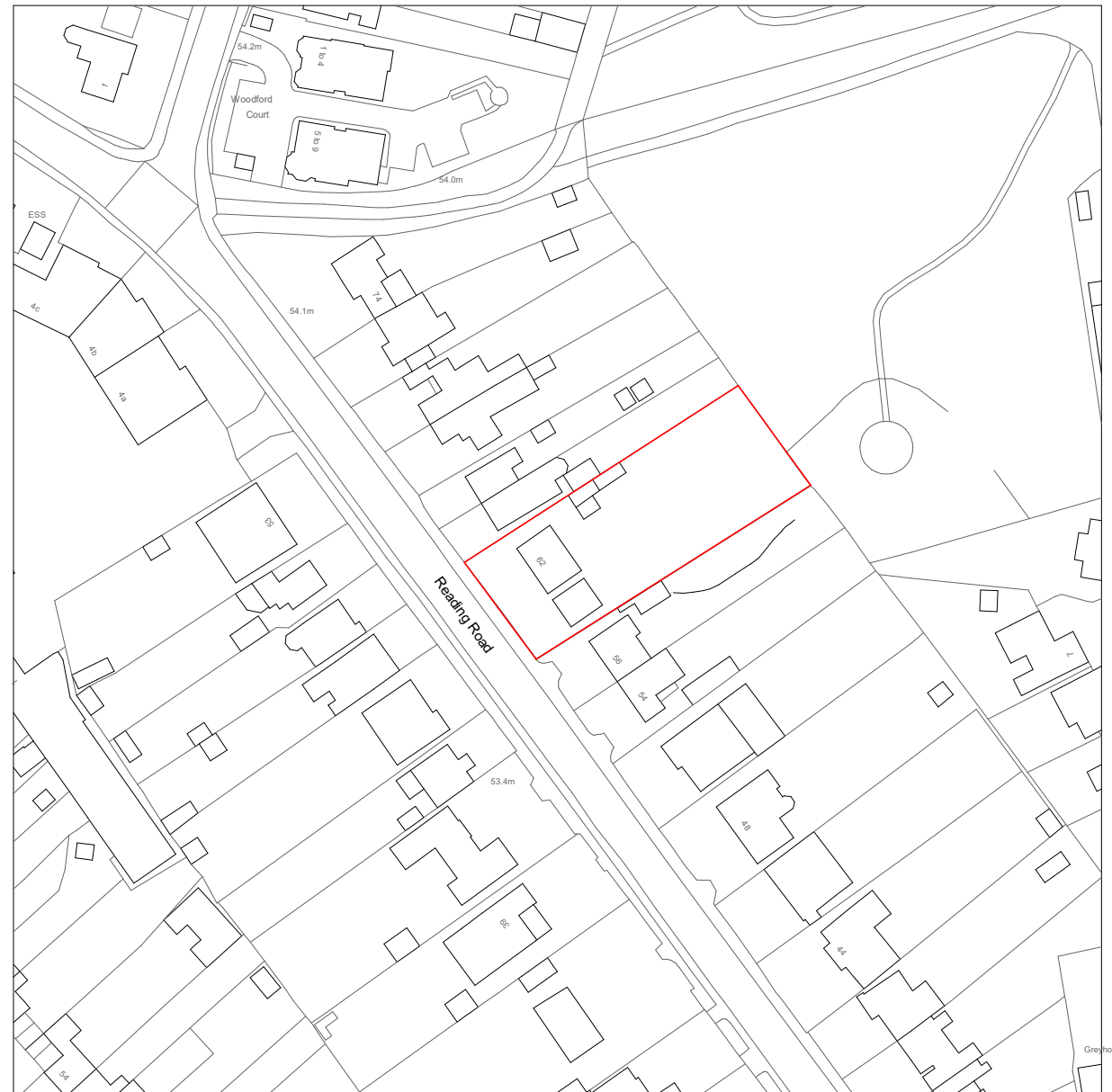


EXISTING 3D VIEW



PROPOSED 3D VIEW

<div>Applicant</div> <div>Boyes Turner Truct Corporation</div>		
<div>Address</div> <div>62 Reading Road, Woodley, RG5 3DB</div>		
<div>Drawing</div> <div>Cover Page</div>		
<div>Drawn by</div> <div>RS</div>	<div>Checked by</div> <div>JPC</div>	<div>Date</div> <div>Nov 2025</div>
<div>Drawing No</div> <div>D&PM 4064 / 00</div>	<div>Rev</div>	<div>Scale</div>
		<div>Size</div> <div>A3</div>
<div>COPYRIGHT</div> <div>This Drawing, design proposal and its content are protected by copyright and can only be used under license and with the expressed authority of Steven Docker Associates.</div>		



Crown Copyright and database rights 2024 OS Licence no. 100018971

Site Location Plan
62 Reading Road,
Woodley, RG5 3DB

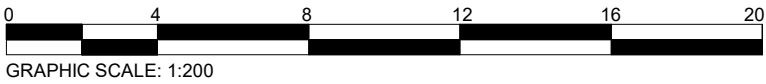
Scale
1 : 1250



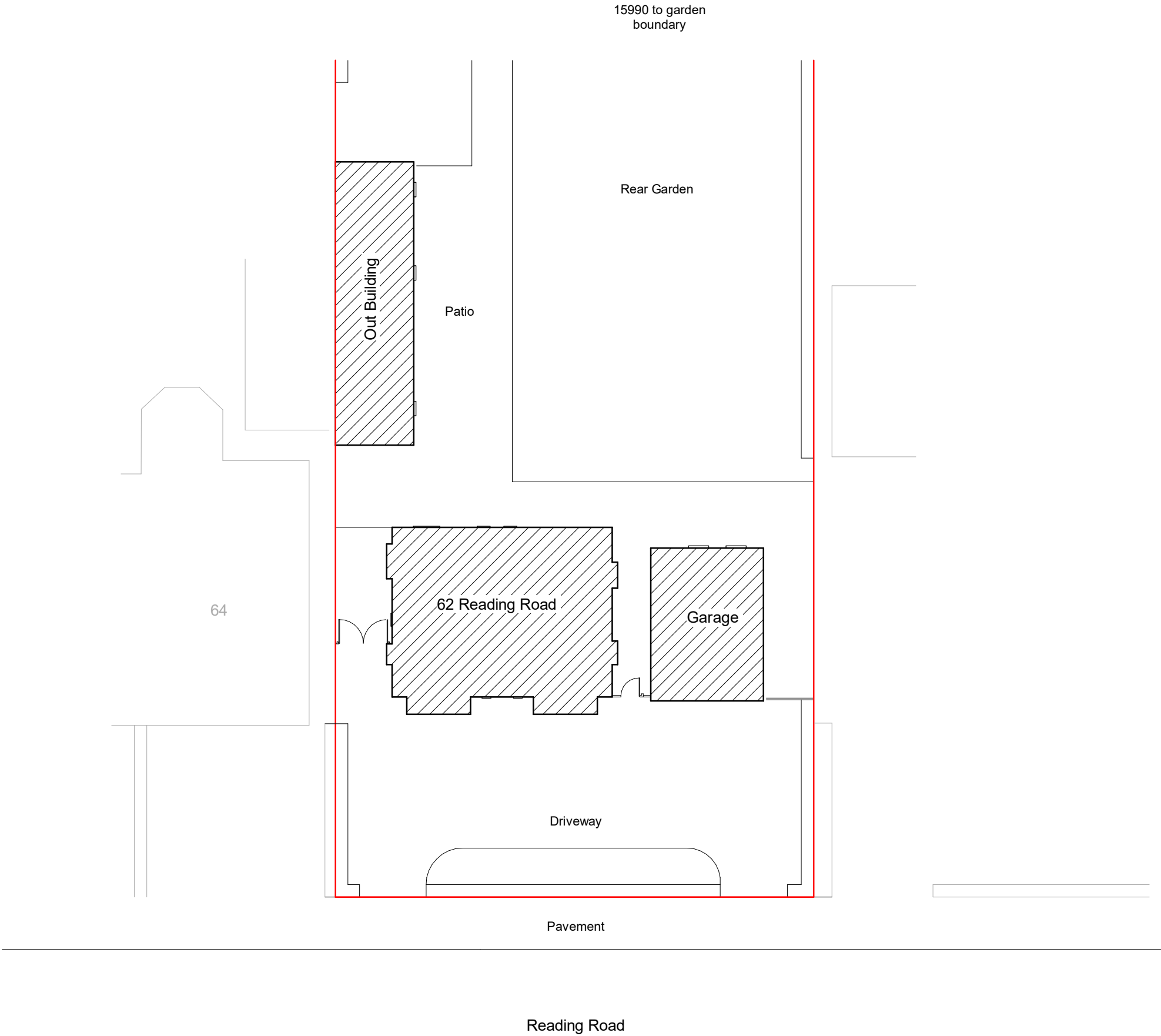
Park House, Parkway, Holmes Chapel, Cheshire, CW4 7BA

01477 544499
f t @ in

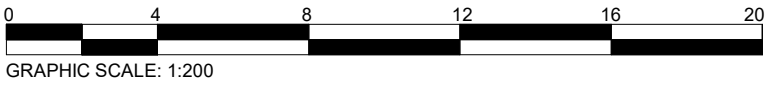
info@stevendocker.co.uk
www.stevendocker.co.uk



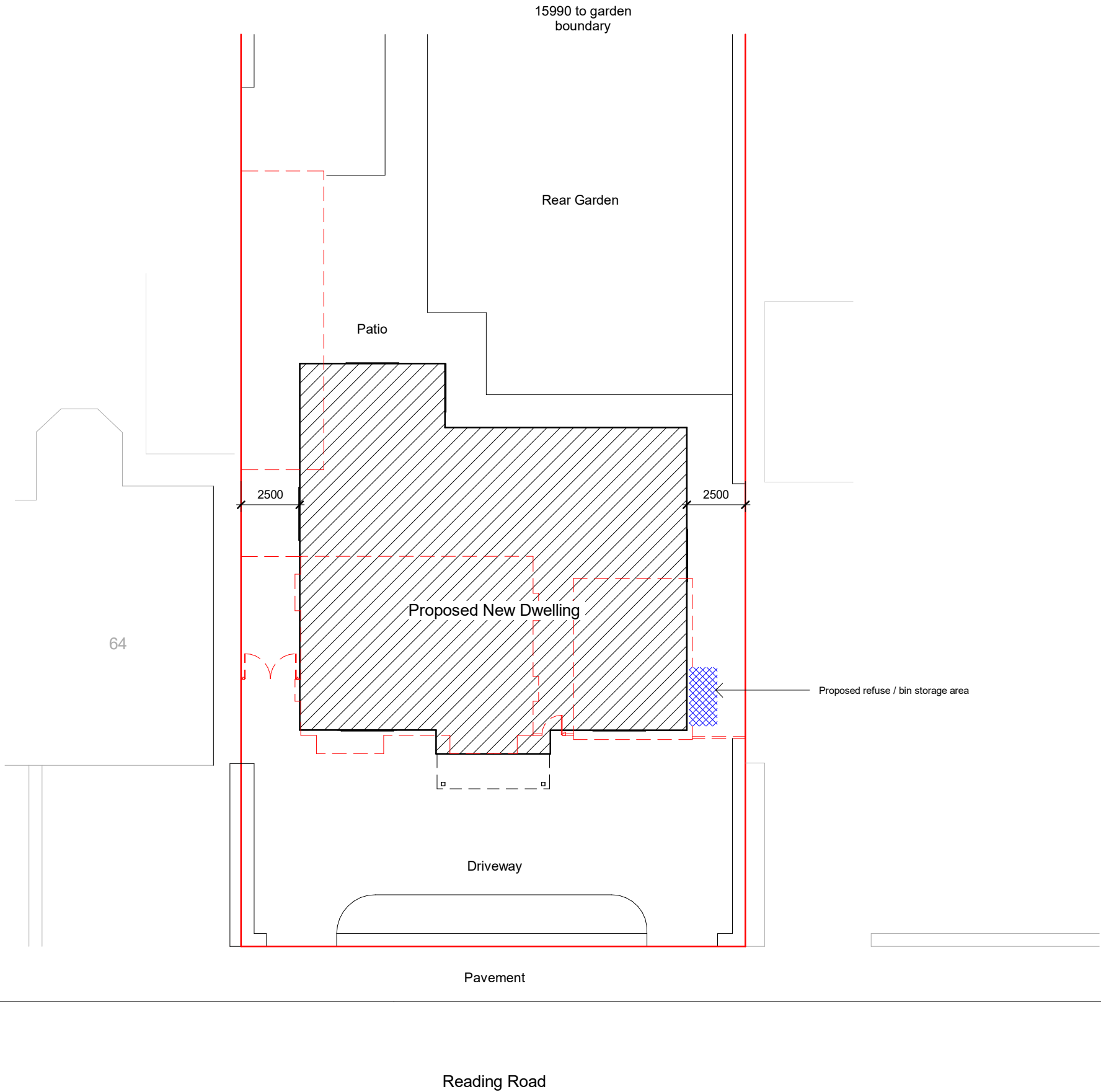
PLANNING DRAWINGS



<div>Client</div> <div>Boyes Turner Truct Corporation</div>		
<div>Address</div> <div>62 Reading Road, Woodley, RG5 3DB</div>		
<div>Drawing</div> <div>Existing Site Plan</div>		
<div>Drawn by</div> <div>RS</div>	<div>Checked by</div> <div>JPC</div>	<div>Date</div> <div>Nov 2025</div>
<div>Drawing No</div> <div>D&PM 4064 / 02</div>	<div>Rev</div>	<div>Scale</div> <div>1 : 200</div>
		<div>Size</div> <div>A3</div>
<div>COPYRIGHT</div> <div>This Drawing, design proposal and its content are protected by copyright and can only be used under license and with the expressed authority of Steven Docker Associates.</div>		

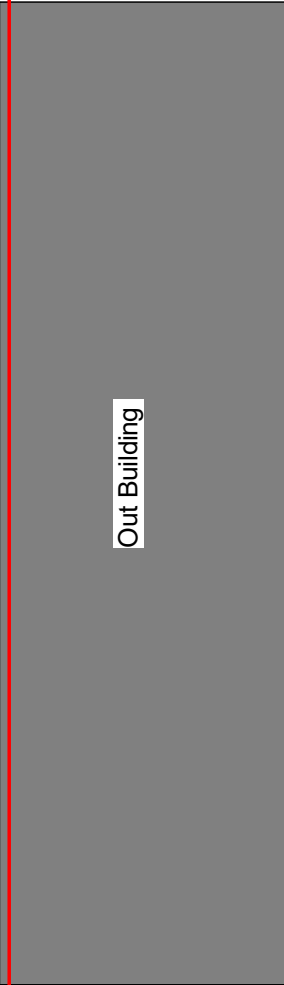
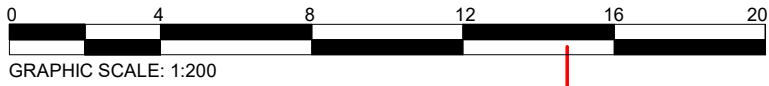


PLANNING DRAWINGS



<div>Applicant</div> <div>Boyes Turner Truct Corporation</div>		
<div>Address</div> <div>62 Reading Road, Woodley, RG5 3DB</div>		
<div>Drawing</div> <div>Proposed Site Plan</div>		
<div>Drawn by</div> <div>RS</div>	<div>Checked by</div> <div>JPC</div>	<div>Date</div> <div>Nov 2025</div>
<div>Drawing No</div> <div>D&PM 4064 / 03</div>	<div>Rev</div>	<div>Scale</div> <div>1 : 200</div>
		<div>Size</div> <div>A3</div>
<div>COPYRIGHT</div> <div>This Drawing, design proposal and its content are protected by copyright and can only be used under license and with the expressed authority of Steven Docker Associates.</div>		

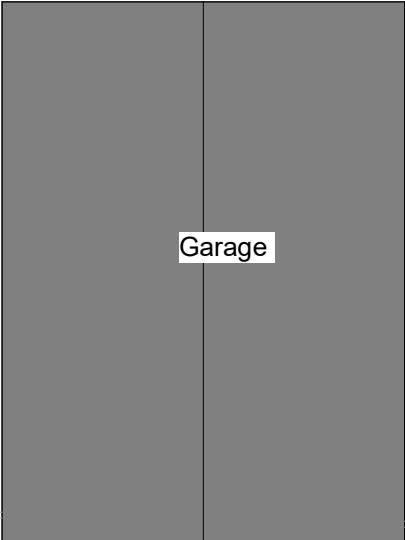
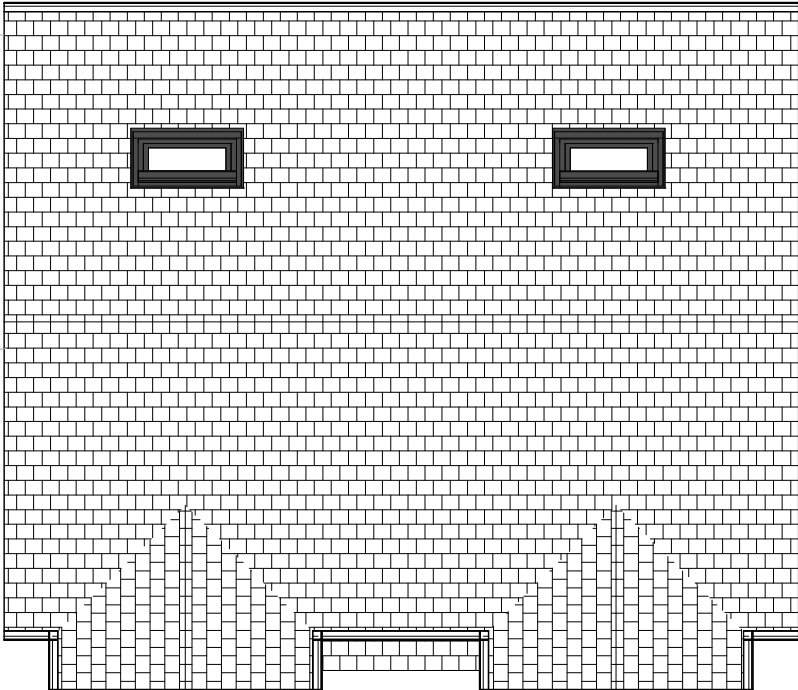
PROPOSED SITE PLAN
1 : 200



Out Building

Patio

Rear Garden



Garage

EXISTING ROOF PLAN
1 : 100

PLANNING DRAWINGS



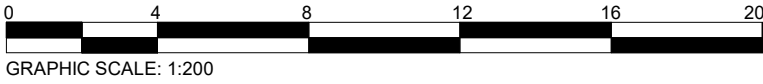
<div>Client</div> <div>Boyes Turner Truct Corporation</div>		
<div>Address</div> <div>62 Reading Road, Woodley, RG5 3DB</div>		
<div>Drawing</div> <div>Existing Roof Plan</div>		
<div>Drawn by</div> <div>RS</div>	<div>Checked by</div> <div>JPC</div>	<div>Date</div> <div>Nov 2025</div>
<div>Drawing No</div> <div>D&PM 4064 / 04</div>	<div>Rev</div>	<div>Scale</div> <div>1 : 100</div>
		<div>Size</div> <div>A3</div>
<div>COPYRIGHT</div> <div>This Drawing, design proposal and its content are protected by copyright and can only be used under license and with the expressed authority of Steven Docker Associates.</div>		



Park House, Parkway, Holmes Chapel, Cheshire, CW4 7BA

01477 544499
f t i @ in

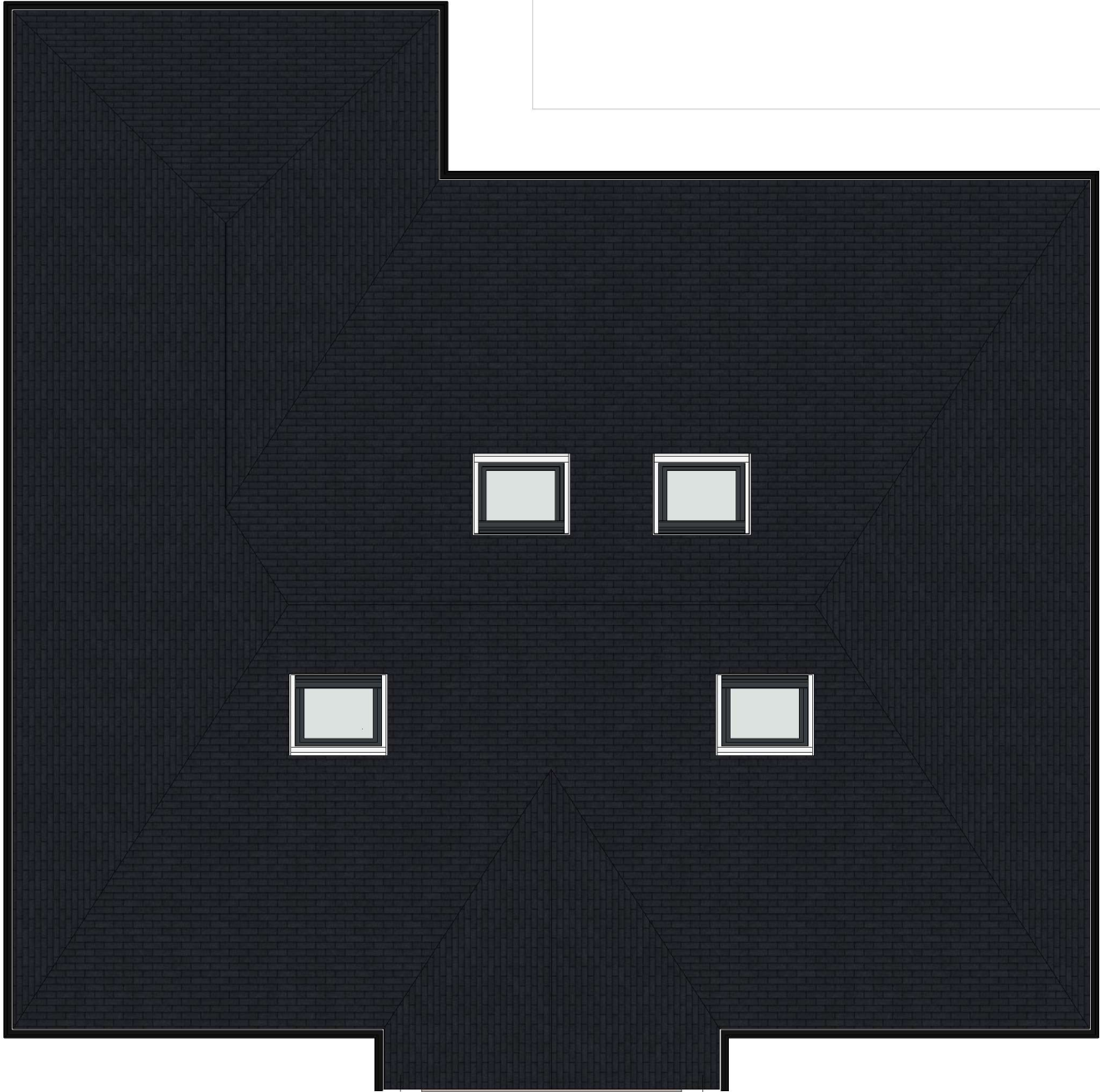
info@stevendocker.co.uk
www.stevendocker.co.uk



PLANNING DRAWINGS

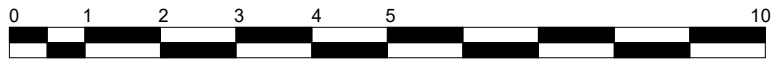


Patio

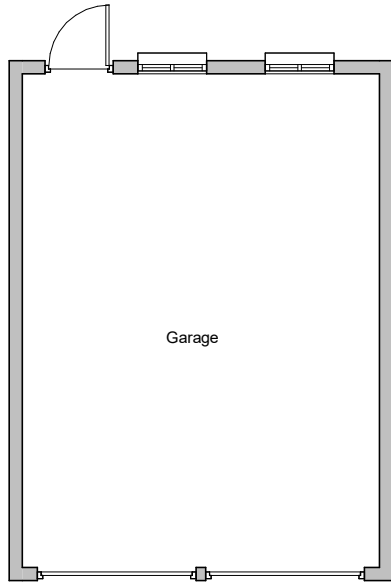
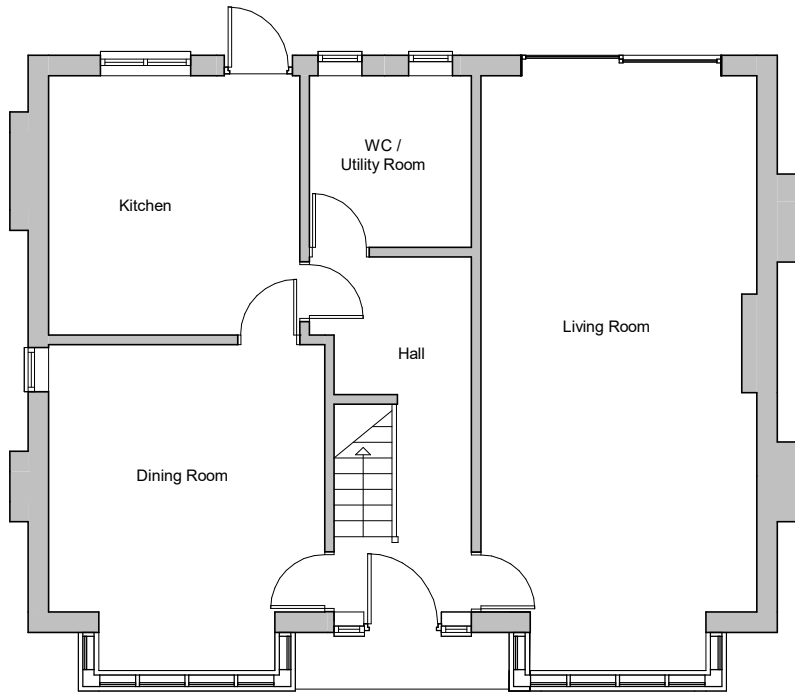
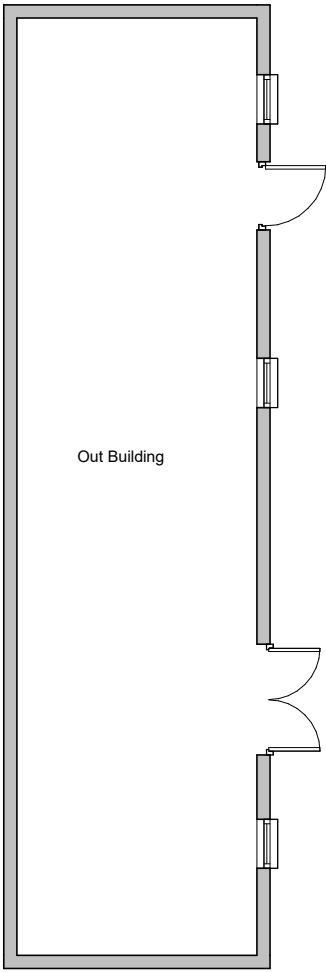


PROPOSED ROOF PLAN
1 : 100

<div>Client</div> <div>Boyes Turner Truct Corporation</div>		
<div>Address</div> <div>62 Reading Road, Woodley, RG5 3DB</div>		
<div>Drawing</div> <div>Proposed Roof Plan</div>		
<div>Drawn by</div> <div>RS</div>	<div>Checked by</div> <div>JPC</div>	<div>Date</div> <div>Nov 2025</div>
<div>Drawing No</div> <div>D&PM 4064 / 05</div>	<div>Rev</div>	<div>Scale</div> <div>1 : 100</div>
		<div>Size</div> <div>A3</div>
<div>COPYRIGHT</div> <div>This Drawing, design proposal and its content are protected by copyright and can only be used under license and with the expressed authority of Steven Docker Associates.</div>		



GRAPHIC SCALE: 1:100



EXISTING GROUND FLOOR PLAN

1 : 100

PLANNING DRAWINGS

<div>Applicant</div> <div>Boyes Turner Truct Corporation</div>		
<div>Address</div> <div>62 Reading Road, Woodley, RG5 3DB</div>		
<div>Drawing</div> <div>Existing Ground Floor Layout Plan</div>		
<div>Drawn by</div> <div>RS</div>	<div>Checked by</div> <div>JPC</div>	<div>Date</div> <div>Nov 2025</div>
<div>Drawing No</div> <div>D&PM 4064 / 06</div>	<div>Rev</div>	<div>Scale</div> <div>1 : 100</div>
		<div>Size</div> <div>A3</div>
<div>COPYRIGHT</div> <div>This Drawing, design proposal and its content are protected by copyright and can only be used under license and with the expressed authority of Steven Docker Associates.</div>		



Park House, Parkway, Holmes Chapel, Cheshire, CW4 7BA

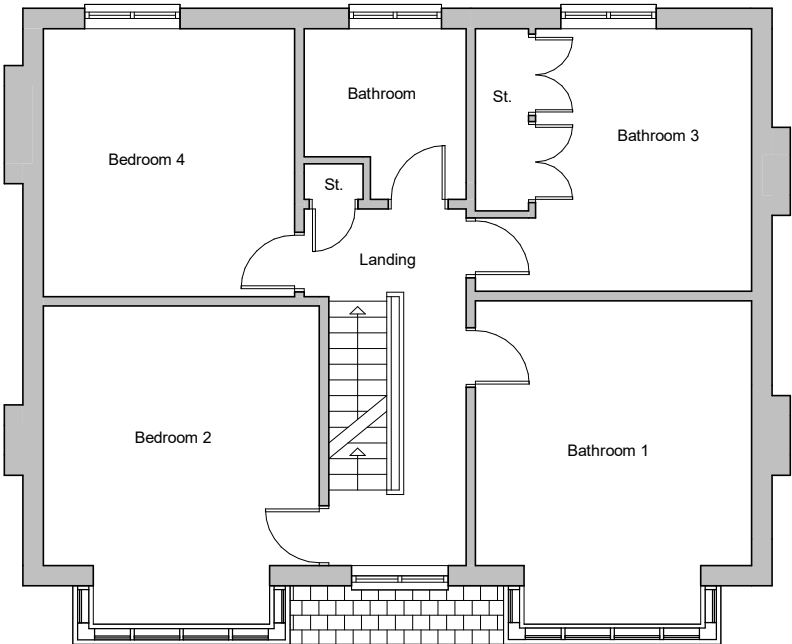
01477 544499
f t i in

info@stevendocker.co.uk
www.stevendocker.co.uk



GRAPHIC SCALE: 1:100

PLANNING DRAWINGS



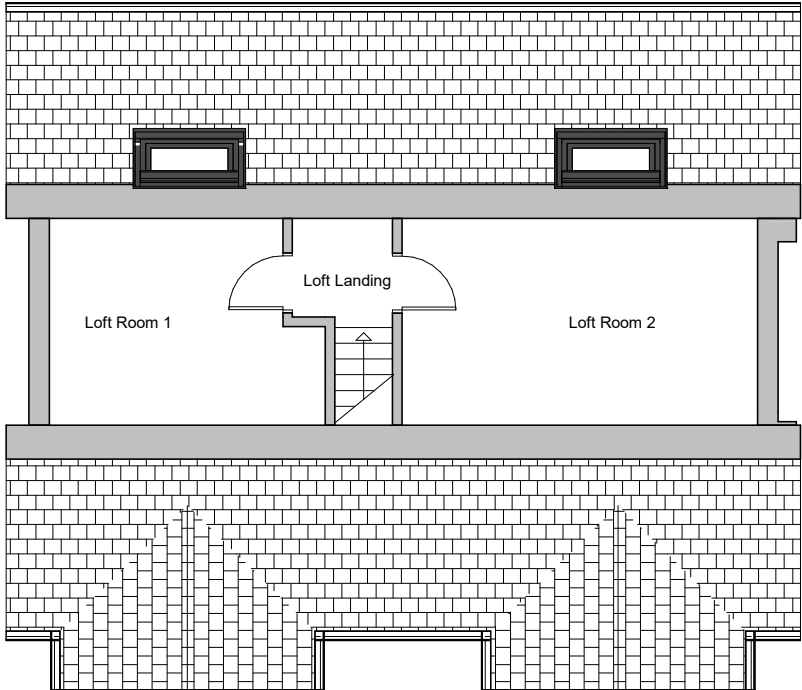
EXISTING FIRST FLOOR PLAN
1 : 100

<div>Applicant</div> <div>Boyes Turner Truct Corporation</div>		
<div>Address</div> <div>62 Reading Road, Woodley, RG5 3DB</div>		
<div>Drawing</div> <div>Existing First Floor Layout Plan</div>		
<div>Drawn by</div> <div>RS</div>	<div>Checked by</div> <div>JPC</div>	<div>Date</div> <div>Nov 2025</div>
<div>Drawing No</div> <div>D&PM 4064 / 07</div>	<div>Rev</div>	<div>Scale</div> <div>1 : 100</div>
		<div>Size</div> <div>A3</div>
<div>COPYRIGHT</div> <div>This Drawing, design proposal and its content are protected by copyright and can only be used under license and with the expressed authority of Steven Docker Associates.</div>		



GRAPHIC SCALE: 1:100

PLANNING DRAWINGS



EXISTING LOFT LEVEL FLOOR PLAN

1 : 100

<div>Applicant</div> <div>Boyes Turner Truct Corporation</div>		
<div>Address</div> <div>62 Reading Road, Woodley, RG5 3DB</div>		
<div>Drawing</div> <div>Existing Loft Floor Layout Plan</div>		
<div>Drawn by</div> <div>RS</div>	<div>Checked by</div> <div>JPC</div>	<div>Date</div> <div>Nov 2025</div>
<div>Drawing No</div> <div>D&PM 4064 / 08</div>	<div>Rev</div>	<div>Scale</div> <div>1 : 100</div>
		<div>Size</div> <div>A3</div>
<div>COPYRIGHT</div> <div>This Drawing, design proposal and its content are protected by copyright and can only be used under license and with the expressed authority of Steven Docker Associates.</div>		



GRAPHIC SCALE: 1:100

PLANNING DRAWINGS



PROPOSED GROUND FLOOR PLAN
1 : 100

<div>Applicant</div> <div>Boyes Turner Truct Corporation</div>		
<div>Address</div> <div>62 Reading Road, Woodley, RG5 3DB</div>		
<div>Drawing</div> <div>Proposed Ground Floor Layout Plan</div>		
<div>Drawn by</div> <div>RS</div>	<div>Checked by</div> <div>JPC</div>	<div>Date</div> <div>Nov 2025</div>
<div>Drawing No</div> <div>D&PM 4064 / 09</div>	<div>Rev</div>	<div>Scale</div> <div>1 : 100</div>
		<div>Size</div> <div>A3</div>
<div>COPYRIGHT</div> <div>This Drawing, design proposal and its content are protected by copyright and can only be used under license and with the expressed authority of Steven Docker Associates.</div>		



Park House, Parkway, Holmes Chapel, Cheshire, CW4 7BA

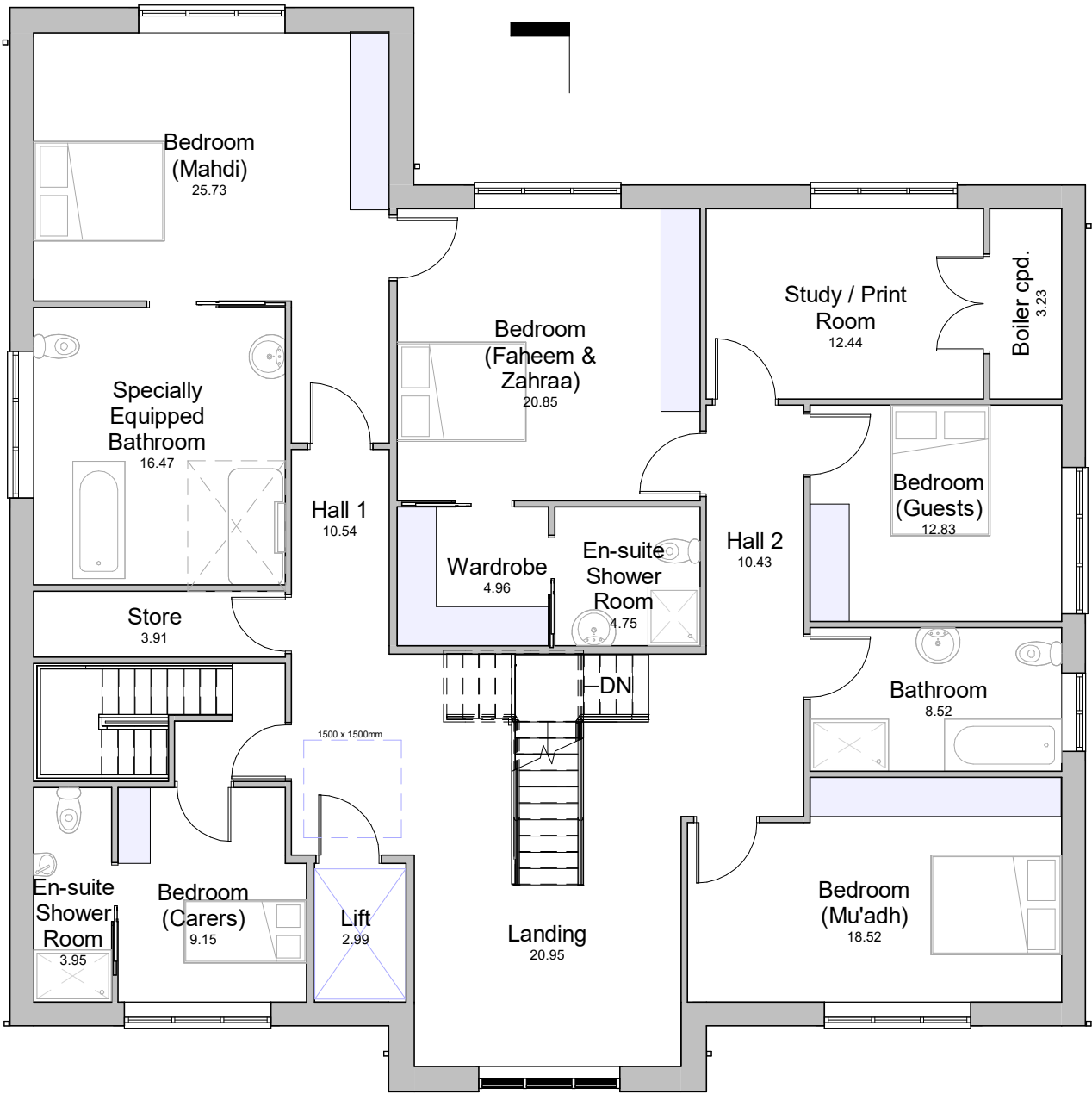
01477 544499
f t i @ in

info@stevendocker.co.uk
www.stevendocker.co.uk

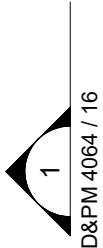


GRAPHIC SCALE: 1:100

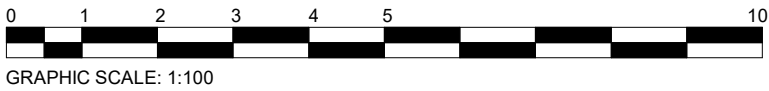
PLANNING DRAWINGS



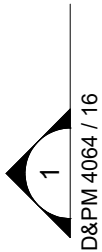
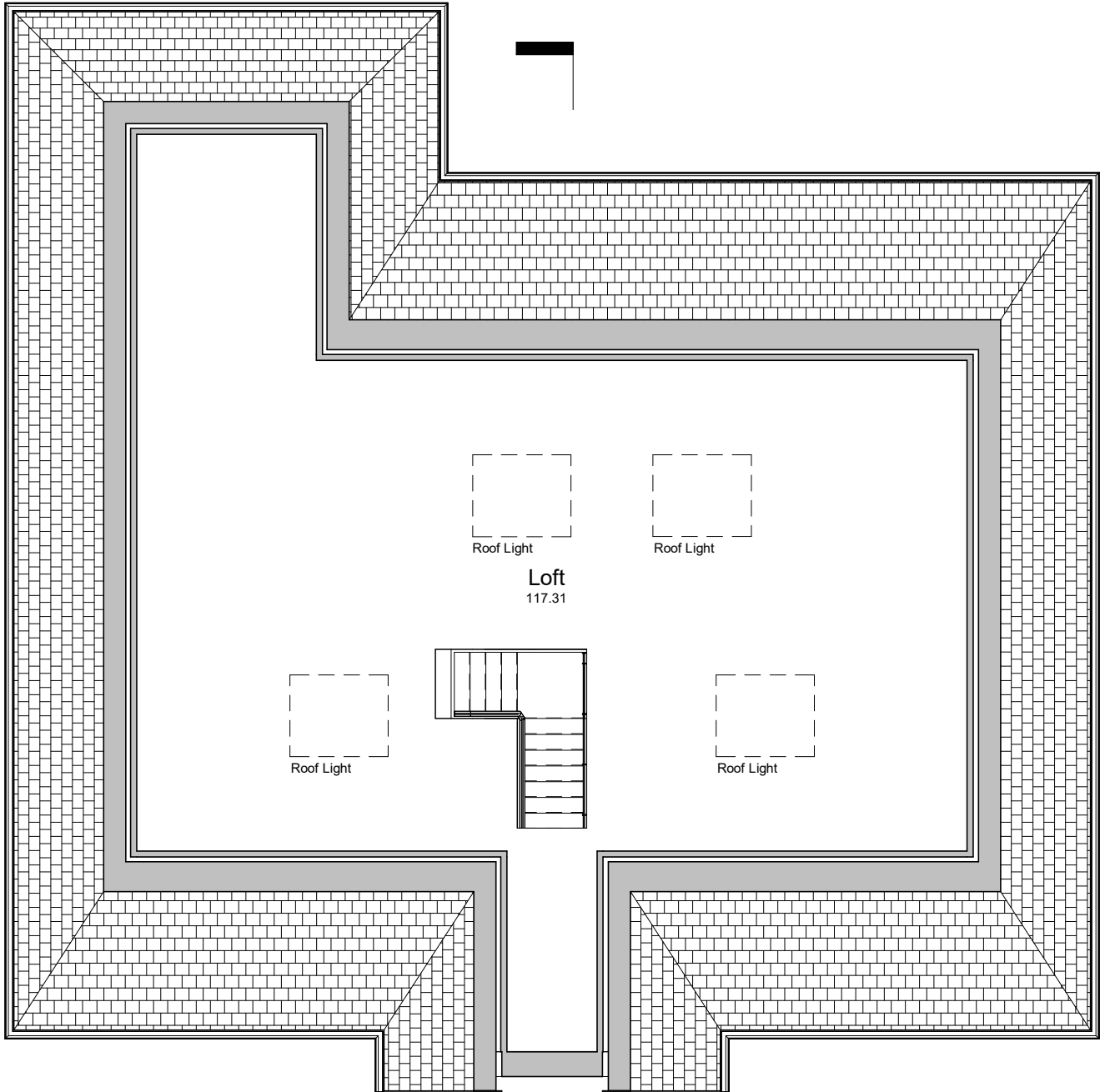
PROPOSED FIRST FLOOR PLAN
1 : 100



<div>Applicant</div> <div>Boyes Turner Truct Corporation</div>		
<div>Address</div> <div>62 Reading Road, Woodley, RG5 3DB</div>		
<div>Drawing</div> <div>Proposed First Floor Layout Plan</div>		
<div>Drawn by</div> <div>RS</div>	<div>Checked by</div> <div>JPC</div>	<div>Date</div> <div>Nov 2025</div>
<div>Drawing No</div> <div>D&PM 4064 / 10</div>	<div>Rev</div>	<div>Scale</div> <div>1 : 100</div>
		<div>Size</div> <div>A3</div>
<div>COPYRIGHT</div> <div>This Drawing, design proposal and its content are protected by copyright and can only be used under license and with the expressed authority of Steven Docker Associates.</div>		

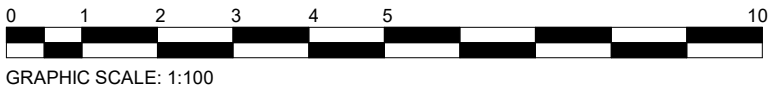


PLANNING DRAWINGS



PROPOSED LOFT FLOOR PLAN
1 : 100

<div>Applicant</div> <div>Boyes Turner Truct Corporation</div>		
<div>Address</div> <div>62 Reading Road, Woodley, RG5 3DB</div>		
<div>Drawing</div> <div>Proposed Loft Floor Layout Plan</div>		
<div>Drawn by</div> <div>RS</div>	<div>Checked by</div> <div>JPC</div>	<div>Date</div> <div>Nov 2025</div>
<div>Drawing No</div> <div>D&PM 4064 / 11</div>	<div>Rev</div>	<div>Scale</div> <div>1 : 100</div>
		<div>Size</div> <div>A3</div>
<div>COPYRIGHT</div> <div>This Drawing, design proposal and its content are protected by copyright and can only be used under license and with the expressed authority of Steven Docker Associates.</div>		



PLANNING DRAWINGS

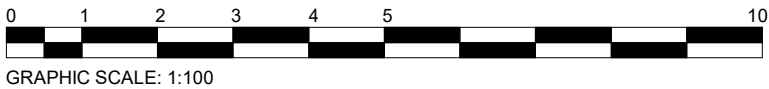


EXISTING SOUTH ELEVATION
1 : 100



EXISTING NORTH ELEVATION
1 : 100

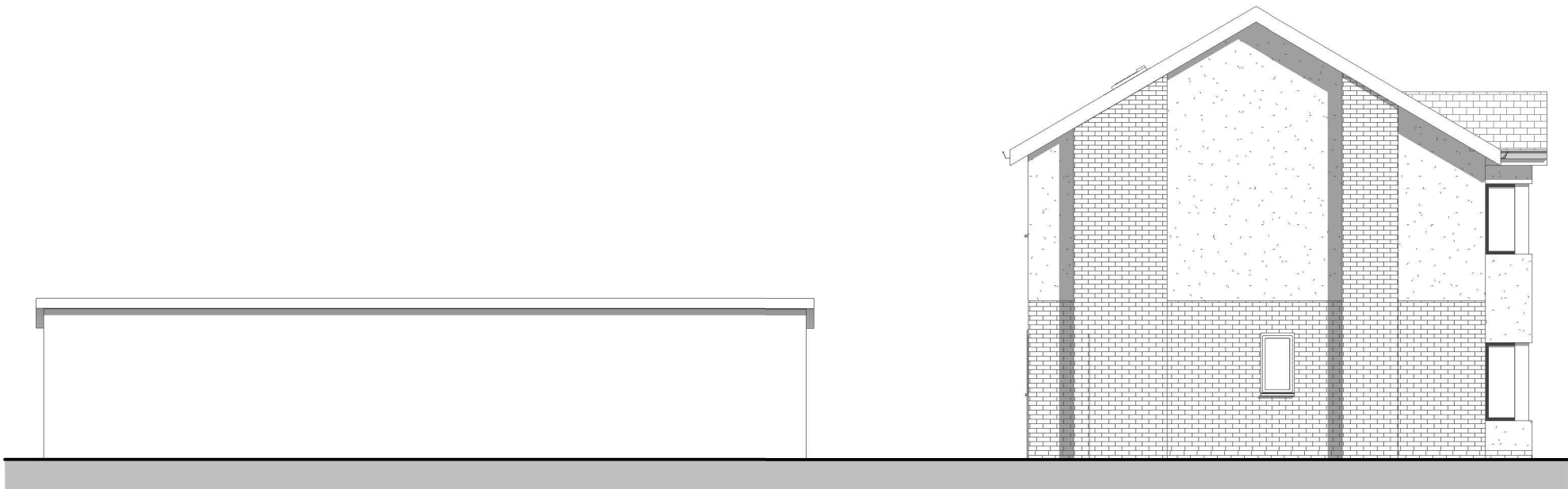
<div>Applicant</div> <div>Boyes Turner Truct Corporation</div>		
<div>Address</div> <div>62 Reading Road, Woodley, RG5 3DB</div>		
<div>Drawing</div> <div>Existing Elevations (1 of 2)</div>		
<div>Drawn by</div> <div>RS</div>	<div>Checked by</div> <div>JPC</div>	<div>Date</div> <div>Nov 2025</div>
<div>Drawing No</div> <div>D&PM 4064 / 12</div>	<div>Rev</div>	<div>Scale</div> <div>1 : 100</div>
		<div>Size</div> <div>A3</div>
<div>COPYRIGHT</div> <div>This Drawing, design proposal and its content are protected by copyright and can only be used under license and with the expressed authority of Steven Docker Associates.</div>		



PLANNING DRAWINGS

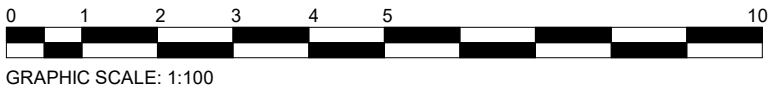


EXISTING EAST ELEVATION
1 : 100



EXISTING WEST ELEVATION
1 : 100

<div>Applicant</div> <div>Boyes Turner Truct Corporation</div>		
<div>Address</div> <div>62 Reading Road, Woodley, RG5 3DB</div>		
<div>Drawing</div> <div>Existing Elevations (2 of 2)</div>		
<div>Drawn by</div> <div>RS</div>	<div>Checked by</div> <div>JPC</div>	<div>Date</div> <div>Nov 2025</div>
<div>Drawing No</div> <div>D&PM 4064 / 13</div>	<div>Rev</div>	<div>Scale</div> <div>1 : 100</div>
		<div>Size</div> <div>A3</div>
<div>COPYRIGHT</div> <div>This Drawing, design proposal and its content are protected by copyright and can only be used under license and with the expressed authority of Steven Docker Associates.</div>		



PLANNING DRAWINGS

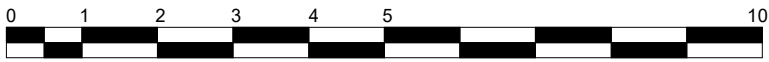


PROPOSED SOUTH ELEVATION
1 : 100



PROPOSED NORTH ELEVATION
1 : 100

<div>Applicant</div> <div>Boyes Turner Truct Corporation</div>		
<div>Address</div> <div>62 Reading Road, Woodley, RG5 3DB</div>		
<div>Drawing</div> <div>Proposed Elevations (1 of 2)</div>		
<div>Drawn by</div> <div>RS</div>	<div>Checked by</div> <div>JPC</div>	<div>Date</div> <div>Nov 2025</div>
<div>Drawing No</div> <div>D&PM 4064 / 14</div>	<div>Rev</div>	<div>Scale</div> <div>1 : 100</div>
		<div>Size</div> <div>A3</div>
<div>COPYRIGHT</div> <div>This Drawing, design proposal and its content are protected by copyright and can only be used under license and with the expressed authority of Steven Docker Associates.</div>		



GRAPHIC SCALE: 1:100

PLANNING DRAWINGS

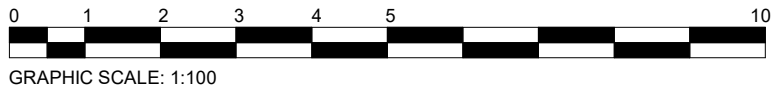


PROPOSED EAST ELEVATION
1 : 100



PROPOSED WEST ELEVATION
1 : 100

<div>Applicant</div> <div>Boyes Turner Truct Corporation</div>		
<div>Address</div> <div>62 Reading Road, Woodley, RG5 3DB</div>		
<div>Drawing</div> <div>Proposed Elevations (2 of 2)</div>		
<div>Drawn by</div> <div>RS</div>	<div>Checked by</div> <div>JPC</div>	<div>Date</div> <div>Nov 2025</div>
<div>Drawing No</div> <div>D&PM 4064 / 15</div>	<div>Rev</div>	<div>Scale</div> <div>1 : 100</div>
		<div>Size</div> <div>A3</div>
<div>COPYRIGHT</div> <div>This Drawing, design proposal and its content are protected by copyright and can only be used under license and with the expressed authority of Steven Docker Associates.</div>		



PLANNING DRAWINGS

04 Roof Ridge Level
9115

03a Loft Level
5450

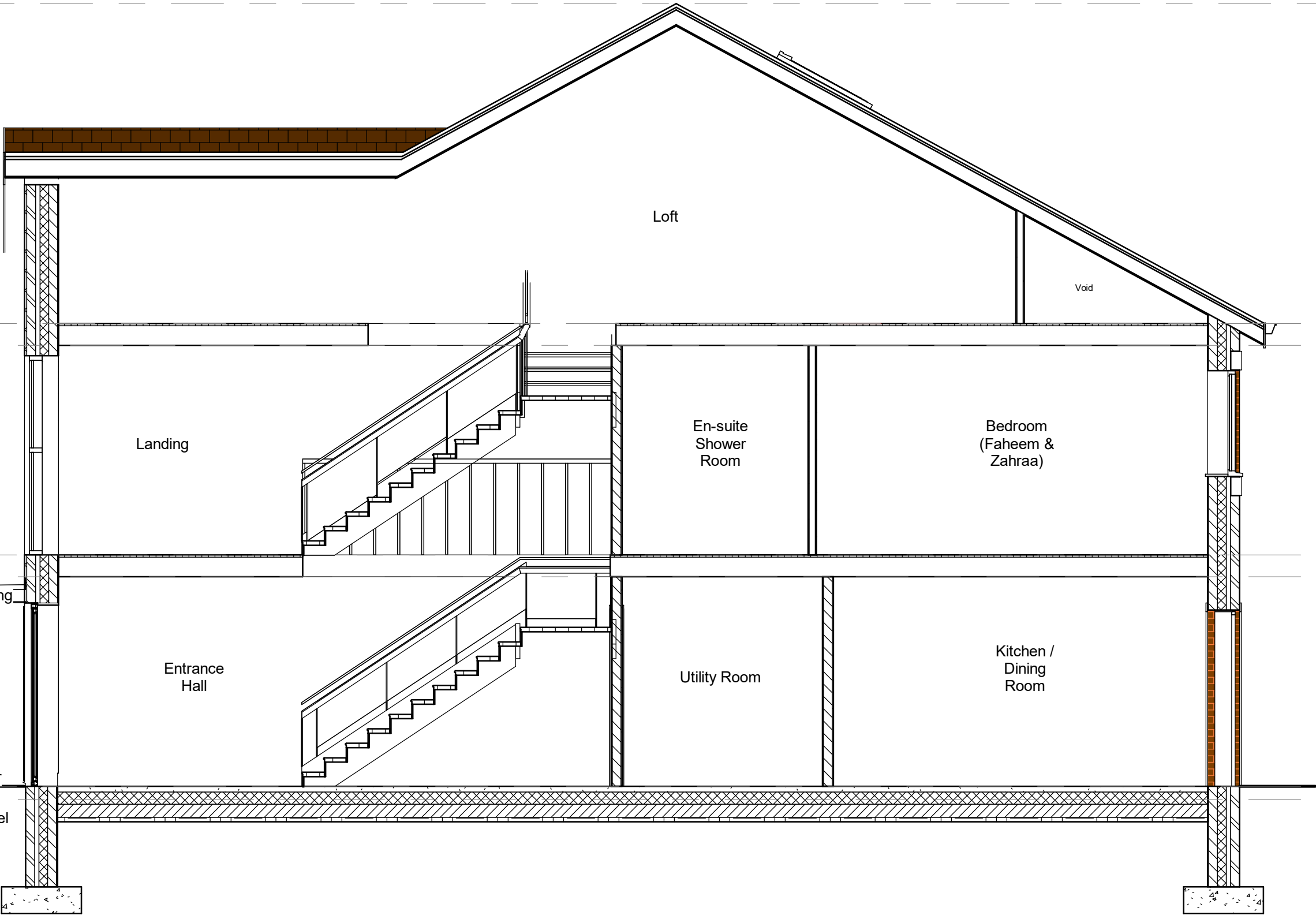
02b First Ceiling
5200

02a First Floor
2800

01b Ground Ceiling
2550

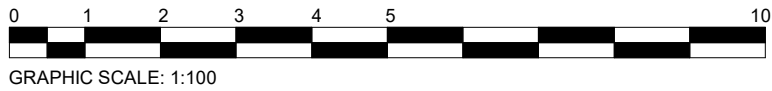
01a Ground Floor
150

00a External Level
0

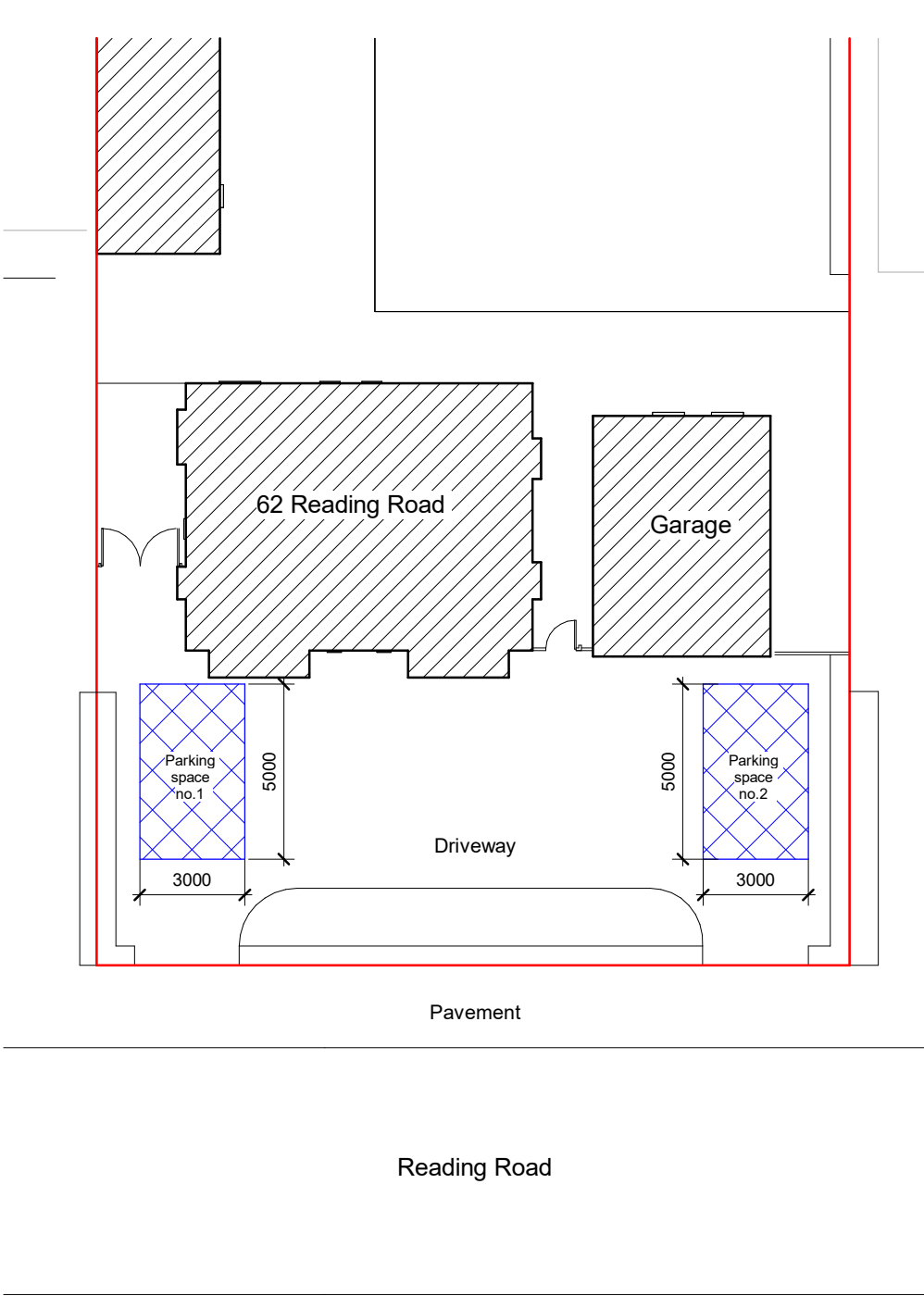


Section A-A
1 : 50

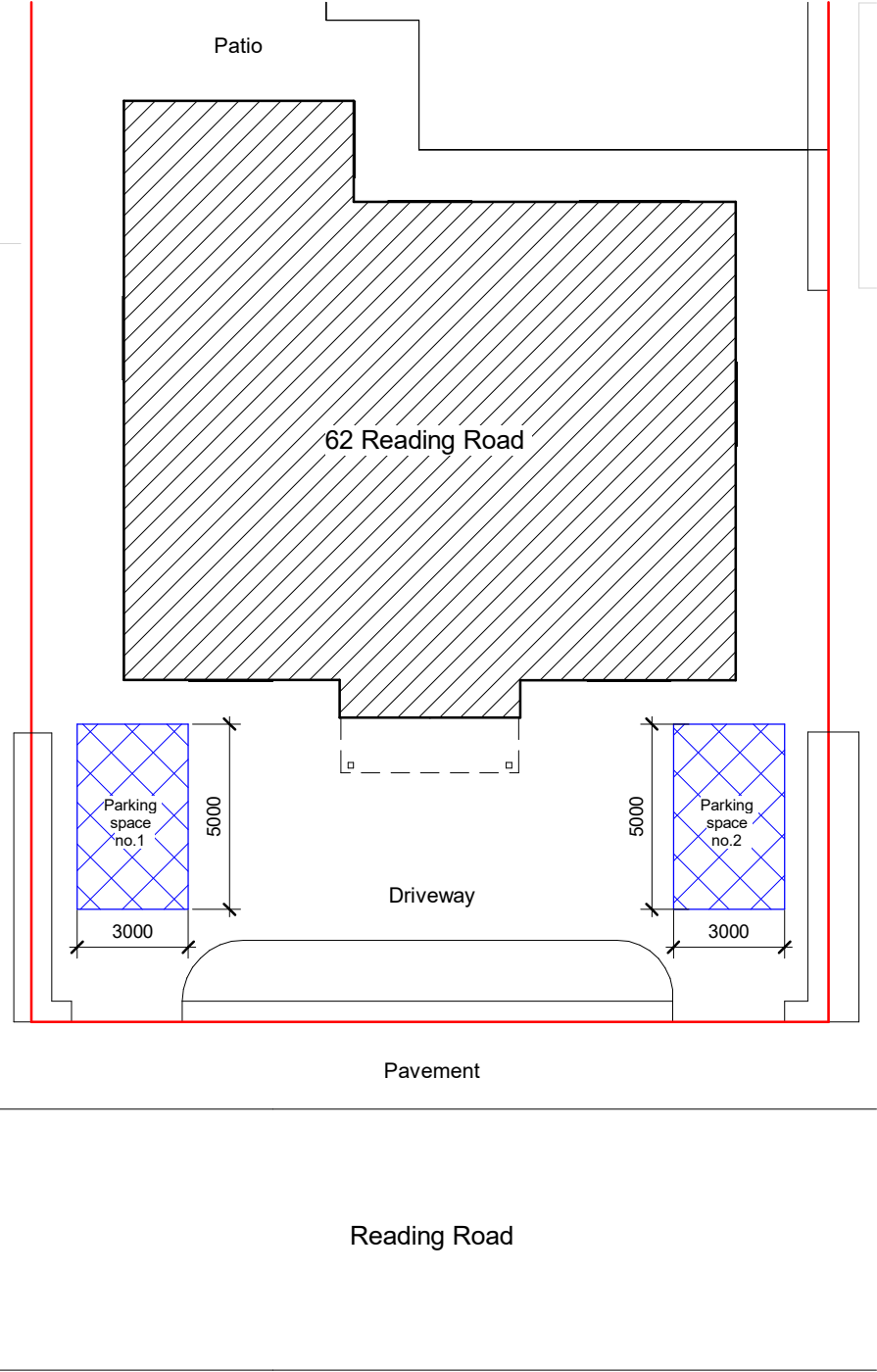
<div>Applicant</div> <div>Boyes Turner Truct Corporation</div>		
<div>Address</div> <div>62 Reading Road, Woodley, RG5 3DB</div>		
<div>Drawing</div> <div>Proposed Section A-A</div>		
<div>Drawn by</div> <div>RS</div>	<div>Checked by</div> <div>JPC</div>	<div>Date</div> <div>Nov 2025</div>
<div>Drawing No</div> <div>D&PM 4064 / 16</div>	<div>Rev</div>	<div>Scale</div> <div>1 : 50</div>
		<div>Size</div> <div>A3</div>
<div>COPYRIGHT</div> <div>This Drawing, design proposal and its content are protected by copyright and can only be used under license and with the expressed authority of Steven Docker Associates.</div>		



PLANNING DRAWINGS



EXISTING PARKING PROVISION
1 : 200



PROPOSED PARKING PROVISION
1 : 200

<div>Applicant</div> Boyes Turner Truct Corporation		
<div>Address</div> 62 Reading Road, Woodley, RG5 3DB		
<div>Drawing</div> Parking Provision		
<div>Drawn by</div> RS	<div>Checked by</div> JPC	<div>Date</div> Nov 2025
<div>Drawing No</div> D&PM 4064 / 17	<div>Rev</div>	<div>Scale</div> 1 : 200
		<div>Size</div> A3
<div>COPYRIGHT</div> <div>This Drawing, design proposal and its content are protected by copyright and can only be used under license and with the expressed authority of Steven Docker Associates.</div>		