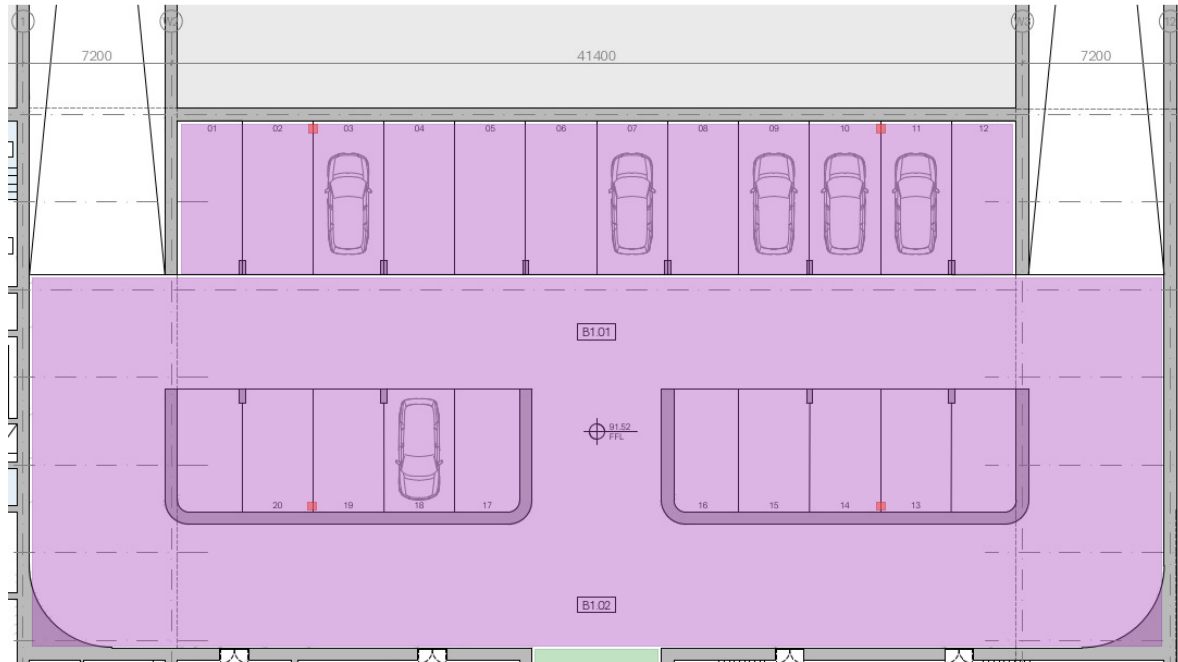


## Project conway

### Main House EV Charger Strategy

The Main House at Project Conway will include for 4No Electric Vehicle Charging points within the new Basement Car Park based on the proposed layout:

Proposed Layout:



The EV Chargers will be 22kW three phase units supplied from the Main House LV distribution system. The suggested unit to be used is shown below with a similar approved option for a wall mounted unit instead of a pedestal based on feedback received.

Wiring to the units would be via armoured (SWA) multicore cable from the main LV panelboard located around 40-50m from the furthest charging position mounted on a perforated cable tray within a service void.



Rolec QUANTAM  
EV Charging Pedestal

2No Universal charging sockets each  
rated at 22kW

PME fault detection (no earth rod  
required)

Suggested product code:  
ROLEC2423B