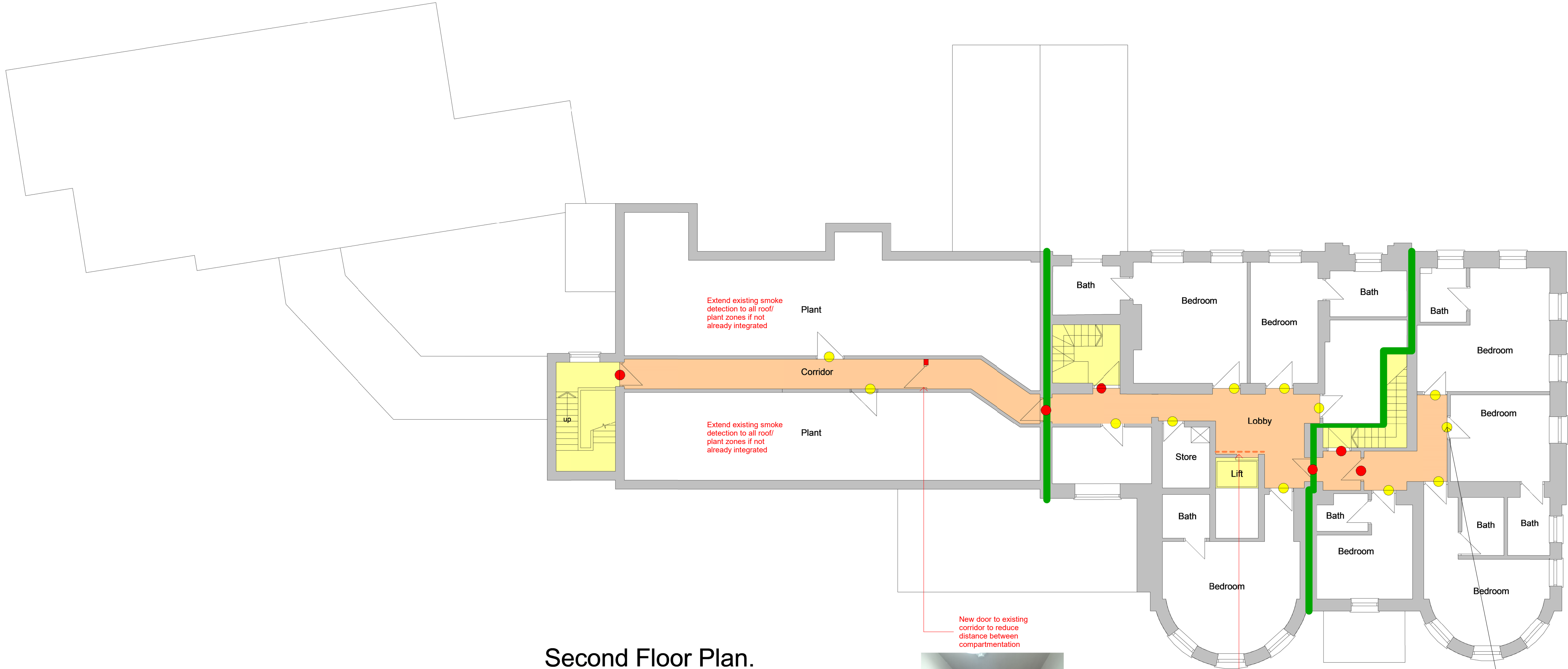


NOTE: Report all errors and omissions to the Architect. All dimensions to be checked on site before fabrication.

Contractors must verify all dimensions on site before setting out, commencing work, or making any shop drawings.

- All dimensions must be checked on site
- All setting out to be checked on site
- All levels must be checked on site and their datum confirmed
- This drawing must be read in conjunction with the relevant specification clauses
- This drawing must not be used for land transfer purposes



Second Floor Plan.

FIRE ADJUSTMENTS KEY

- Fire Compartments dividing line; 60min REI; FD60S. Any wall penetrations to have fire dampeners installed to fire consultants approval.
- Protected staircase/Lift Shaft; 60min REI, FD30S (staircase) / 60min REI, FD30 (lift)
- Protected Corridor; 60min REI, FD30S (ground floor) / 30min REI, FD30S (other floors)
- Replace existing door with new fire door FD60S
- Redecorate existing solid door with intumescent paint for wood/ timber products. Renew existing smoke seals. Ensure existing door ironmongery is fire rated and if not replace for rated product of same style. Service door closer. Door to be FD30S as specified and approved by fire consultant
- Remove door entirely
- Fire Shutter to specialists design

* Please note that the design plans and proposals produced are based upon a Fire Risk Assessment 24.08.2025 by Nadim Choudhary of Fire Safety Services Ltd IFE Membership no. 00071097. These drawings are for Listed Building Application Purposes only and any variation to the designed scheme should be approved by the appointed Fire Consultant.



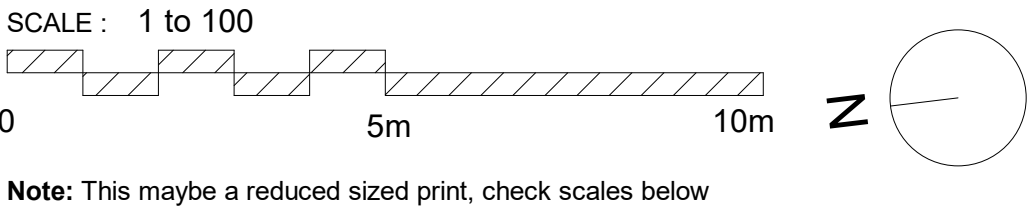
New door to existing corridor to reduce distance between compartmentation



New fire shutter/ curtain linked to fire alarm system to front of lift to manufacturers specification



Typical Second floor doors for upgrade



Lynden Hill Clinic		Second Floor Plan Fire Upgrade Proposals	
Project number	2043	E103	
Date	AUG25		
Drawn by	Author	Project Status	Scale @ A1 1 : 100
Project Status	Project Status		